

(LFK3.LFK) 24137

LUFKIN THREE DEPARTURE

AL-5461 (FAA)

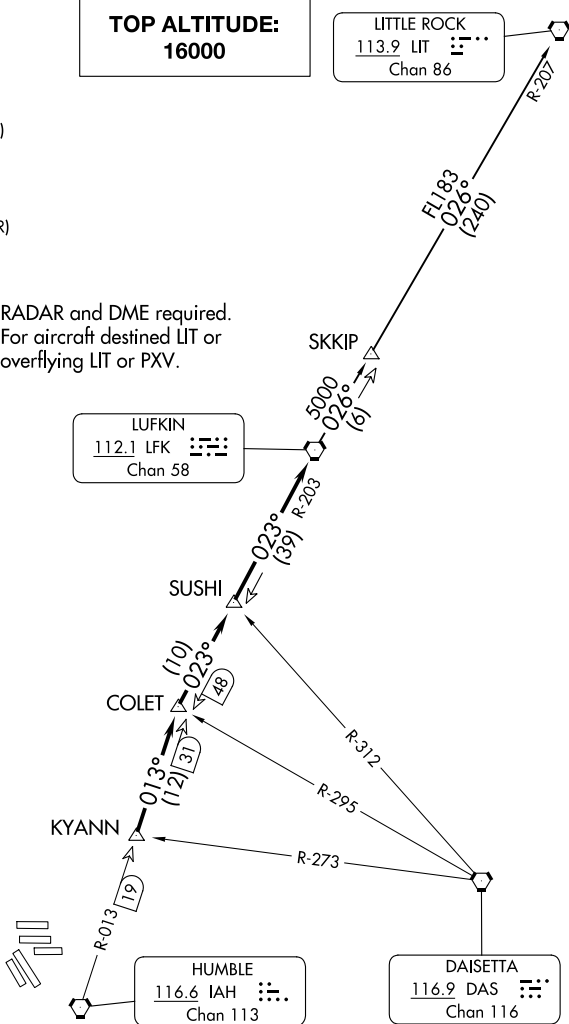
GEORGE BUSH INTCNL/HOUSTON (IAH)
HOUSTON, TEXAS

D-ATIS
124.05
CLNC DEL
128.1
CPDLC
GND CON
118.575 (Rwys 8L/R, 26L/R, 9/27)
121.7 (Rwys 15L/R, 33L/R)
HOUSTON TOWER
120.725 290.2 (Rwys 8L/26R)
125.35 290.2 (Rwys 8R/26L)
127.3 288.25 (Rwys 15L/R, 33L/R)
135.15 290.2 (Rwys 9/27)
HOUSTON DEP CON
132.25 285.425

**TOP ALTITUDE:
16000**

LITTLE ROCK
113.9 LIT
Chan 86

NOTE: RADAR and DME required.
NOTE: For aircraft destined LIT or
overflying LIT or PXV.



TAKEOFF MINIMUMS:

Rwys 8L/R, 9, 15L/R, 26L/R, 27, 33L/R: Standard.

NOTE: Chart not to scale.

(CONTINUED ON FOLLOWING PAGE)

SC-5, 11 JUL 2024 to 08 AUG 2024

SC-5, 11 JUL 2024 to 08 AUG 2024

LUFKIN THREE DEPARTURE
(LFK3.LFK) 07OCT21

HOUSTON, TEXAS
GEORGE BUSH INTCNL/HOUSTON (IAH)