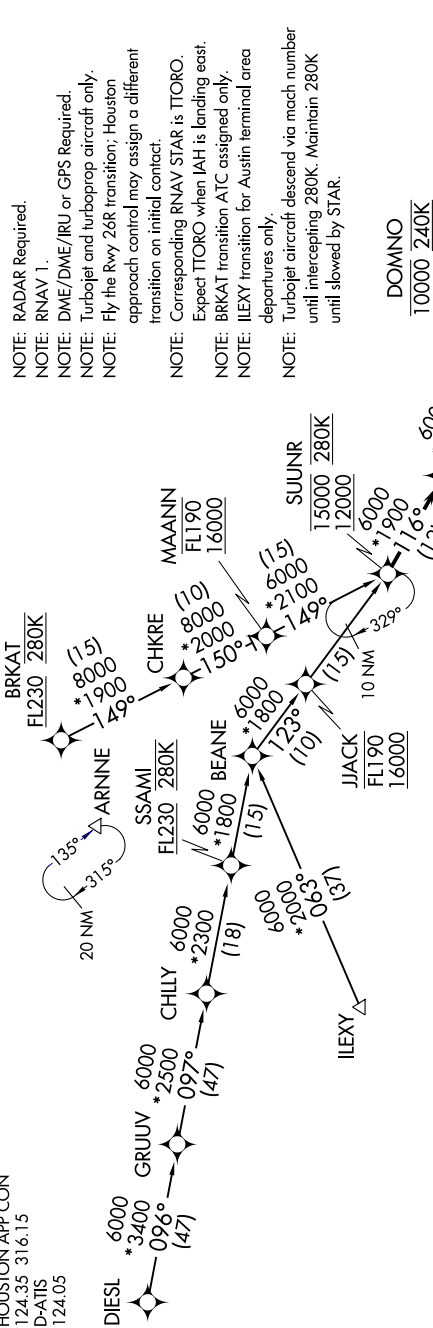
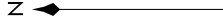


SC-5, 11 JUL 2024 to 08 AUG 2024

HOUSTON APP CON
124.35 316.15
D-ATIS
124.05



- NOTE: RADAR Required.
- NOTE: RNAV 1.
- NOTE: DME/DME/IRU or GPS Required.
- NOTE: Turbojet and turboprop aircraft only.
- NOTE: Fly the Rwy 26R transition; Houston approach control may assign a different transition on initial contact.
- NOTE: Corresponding RNAV STAR is ITORO.
- NOTE: Expect ITORO when IAH is landing east.
- NOTE: BRKAT transition ATC assigned only.
- NOTE: ILEXY transition for Austin terminal area departures only.
- NOTE: Turbojet aircraft descend via mach number until intercepting 280K. Maintain 280K until slowed by STAR.



NOTE: Chart not to scale.

ARRIVAL ROUTE DESCRIPTION

- BRKAT TRANSITION (BRKAT.MSCOT4):
- CHILY TRANSITION (CHILY.MSCOT4):
- DIESEL TRANSITION (DIESEL.MSCOT4):
- ILEXY TRANSITION (ILEXY.MSCOT4):

From SUUNR on track 116° to cross MSCOT at 10000, then on track 116° to HWKII, then on track 116° to cross DOMNO between 8000 and 10000 and at 240K.

LANDING RUNWAY 26L: From DOMNO on track 087° to cross ZOEEEE at 7000 and at 210K, then on track 087°. Expect vectors to final approach course.

LANDING RUNWAY 26R: From DOMNO on track 087° to cross SKLER at 6000 and at 210K, then on track 087°. Expect vectors to final approach course.

LANDING RUNWAY 27: From DOMNO on track 136° to cross BYSUN at 6000, then on track 136° to SMOCR, then on track 087° to cross PRAYY at 6000 and at 210K, then on track 087°. Expect vectors to final approach course.