

WAAS CH 97726 W26A	APP CRS 267°	Rwy Idg TDZE Apt Elev	9000 96 96
--	------------------------	-----------------------------	---------------------------------------

RNAV (GPS) Z RWY 26R

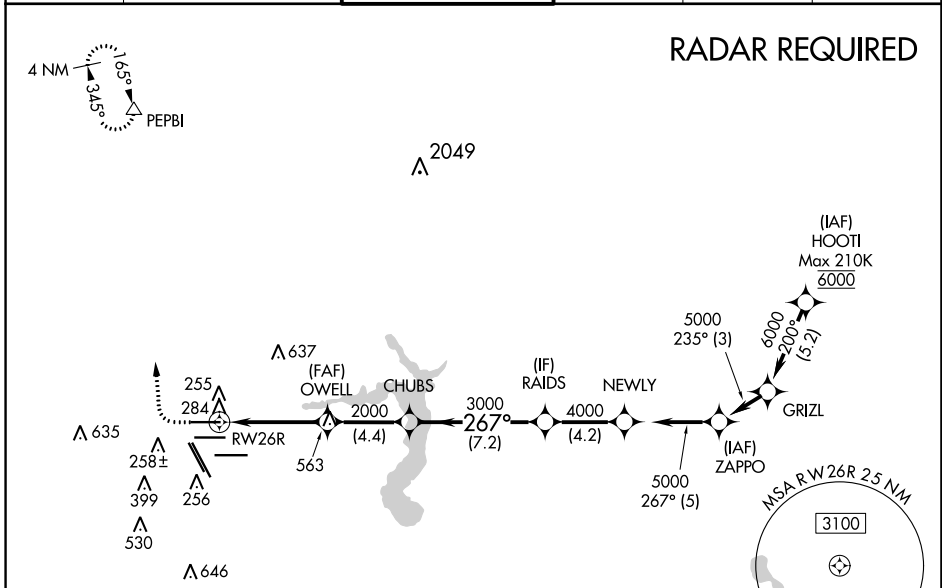
GEORGE BUSH INTCNTL/HOUSTON (IAH)

▼ For uncompensated Baro-VNAV systems, LNAV/VNAV NA below -3°C (27°F) or above 54°C (130°F). For inop ALSF, increase LPV Cat E visibility to RVR 4000, LNAV/VNAV all Cats visibility to 1¼, and LNAV Cat C/D/E visibility to 1¾. DME/DME RNP-0.3 NA. Simultaneous approach authorized with Rwy 26L and Rwy 27. LNAV procedure NA during simultaneous operations. Use of FD or AP providing RNAV track guidance required during simultaneous operations.

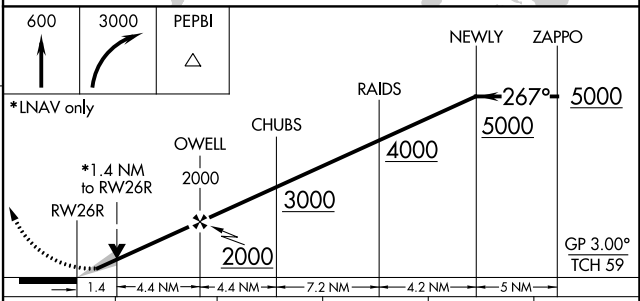
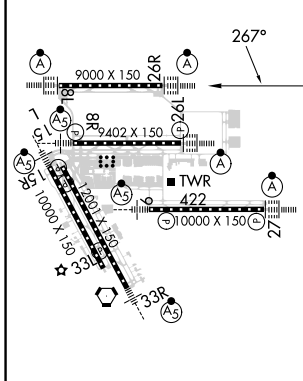


MISSED APPROACH: Climb to 600 then climbing right turn to 3000 direct PEPBI and hold.

D-ATIS 124.05	HOUSTON APP CON 120.05 379.1 EAST 124.35 316.15 WEST	HOUSTON TOWER 120.72 290.2	GND CON 121.7	CLNC DEL 128.1	CPDLC
-------------------------	--	--------------------------------------	-------------------------	--------------------------	-------



ELEV 96	D	TDZE 96
---------	----------	---------



CATEGORY	A	B	C	D	E
LPV DA		296/18	200 (200-½)		
LNAV/VNAV DA		496/42	400 (400-¾)		
LNAV MDA	600/24	504 (600-½)		600/55	504 (600-1)

TDZ/CL Rws 8R, 8L, 15R, 26R, 26L, 27 and 33L
HIRL all Rws

SC-5, 11 JUL 2024 to 08 AUG 2024

SC-5, 11 JUL 2024 to 08 AUG 2024