

# TEJAS FIVE ARRIVAL (RNAV) Transition Routes

HOUSTON, TEXAS

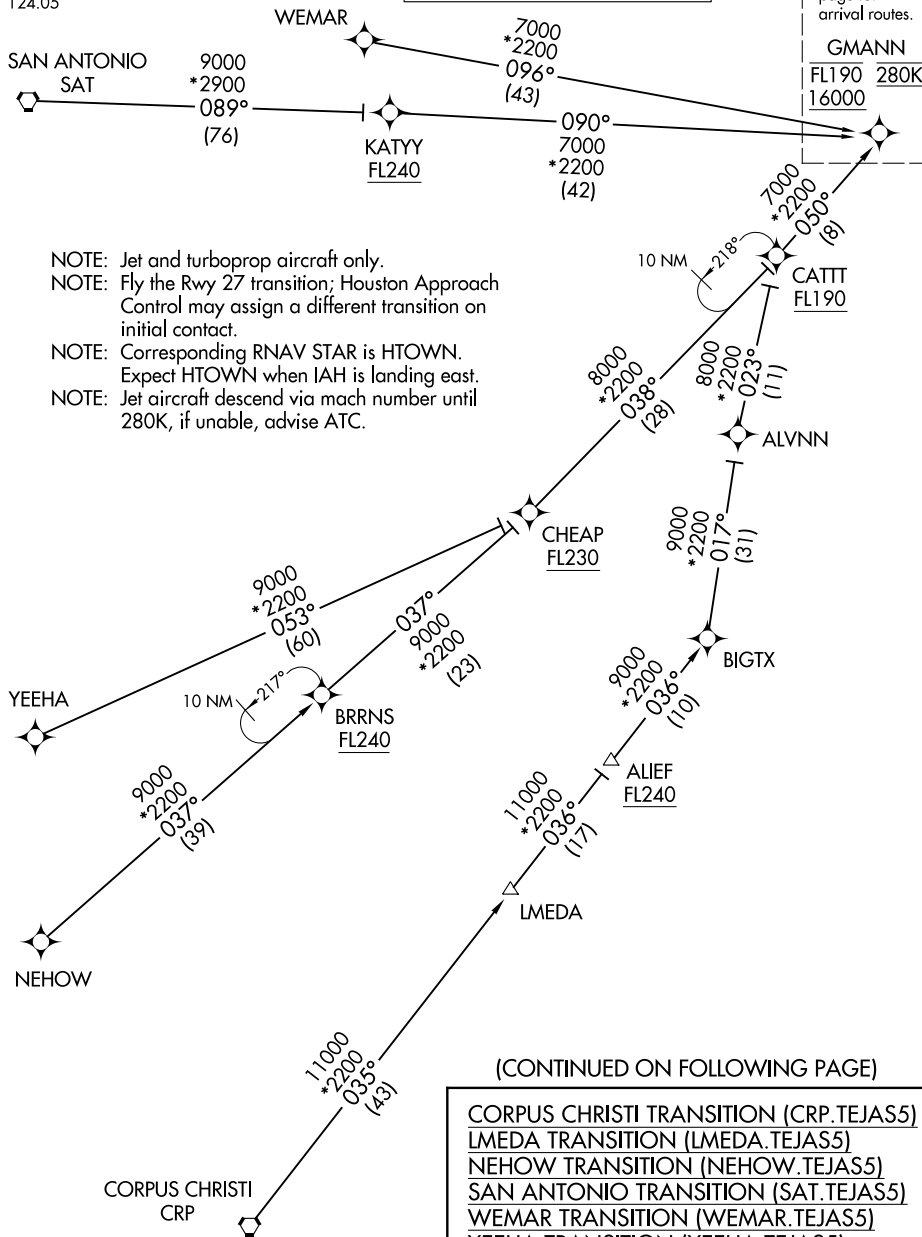
HOUSTON APP CON  
119.175 291.675  
D-ATIS  
124.05

RNAV 1 - DME/DME/IRU or GPS.

RADAR required.

See following page for arrival routes.

**GMANN**  
FL190 280K  
16000



- NOTE: Jet and turboprop aircraft only.
- NOTE: Fly the Rwy 27 transition; Houston Approach Control may assign a different transition on initial contact.
- NOTE: Corresponding RNAV STAR is HTOWN. Expect HTOWN when IAH is landing east.
- NOTE: Jet aircraft descend via mach number until 280K, if unable, advise ATC.

(CONTINUED ON FOLLOWING PAGE)

CORPUS CHRISTI TRANSITION (CRP.TEJAS5)  
LMEDA TRANSITION (LMEDA.TEJAS5)  
NEHOW TRANSITION (NEHOW.TEJAS5)  
SAN ANTONIO TRANSITION (SAT.TEJAS5)  
WEMAR TRANSITION (WEMAR.TEJAS5)  
YEEHA TRANSITION (YEEHA.TEJAS5)

NOTE: Chart not to scale.

SC-5, 11 JUL 2024 to 08 AUG 2024

SC-5, 11 JUL 2024 to 08 AUG 2024

# TEJAS FIVE ARRIVAL (RNAV) Transition Routes

HOUSTON, TEXAS