

APP CRS	Rwy Idg	<b>3801</b>
<b>066°</b>	TDZE	<b>628</b>
	Apt Elev	<b>635</b>

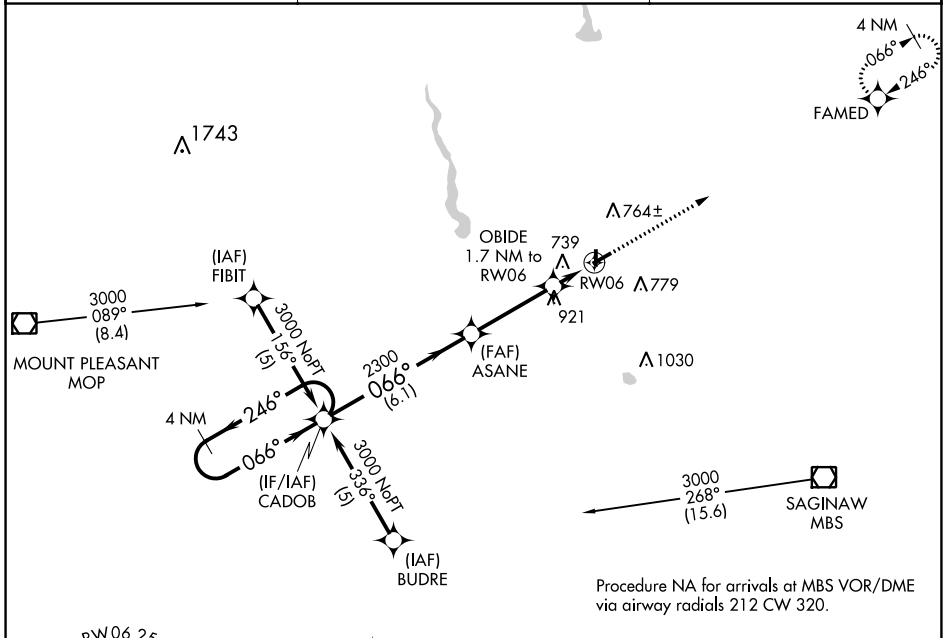
# RNAV (GPS) RWY 6

JACK BARSTOW (IKW)

**▽** DME/DME RNP-0.3 NA. Rwy 24 helicopter visibility reduction below ¾ SM NA.  
**▲** When local altimeter setting not received, use MBS Intl altimeter setting and increase all MDA 40 feet and LNAV Cat C visibility ¼ mile. Circling Rwy 18, 36 NA at night.

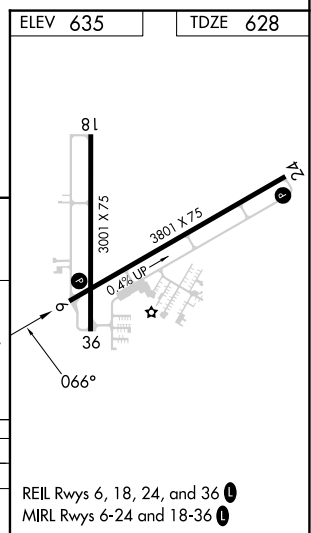
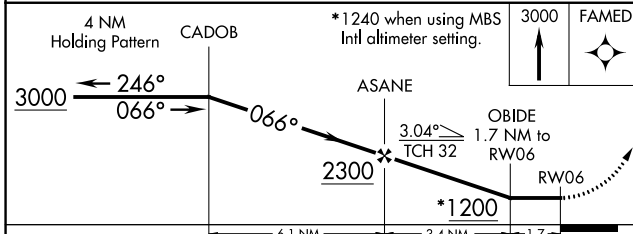
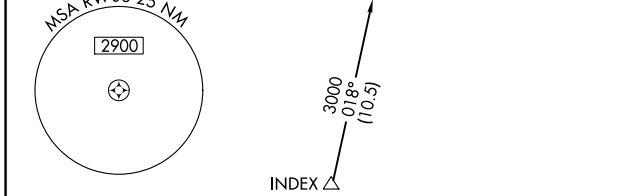
MISSED APPROACH: Climb to 3000 direct FAMED and hold.

AWOS-3 <b>119.525</b>	GREAT LAKES APP CON ★ <b>126.45 235.625</b>	UNICOM <b>122.8 (CTAF) 0</b>
--------------------------	--	---------------------------------



EC-1, 11 JUL 2024 to 08 AUG 2024

EC-1, 11 JUL 2024 to 08 AUG 2024



CATEGORY	A	B	C	D
LNAV MDA	1000-1 372 (400-1)			NA
CIRCLING	1120-1	485 (500-1)	1240-1¾ 605 (700-1¾)	NA