

MIDLAND, MICHIGAN

AL-5476 (FAA)

24193

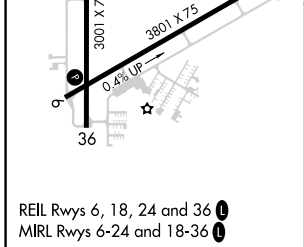
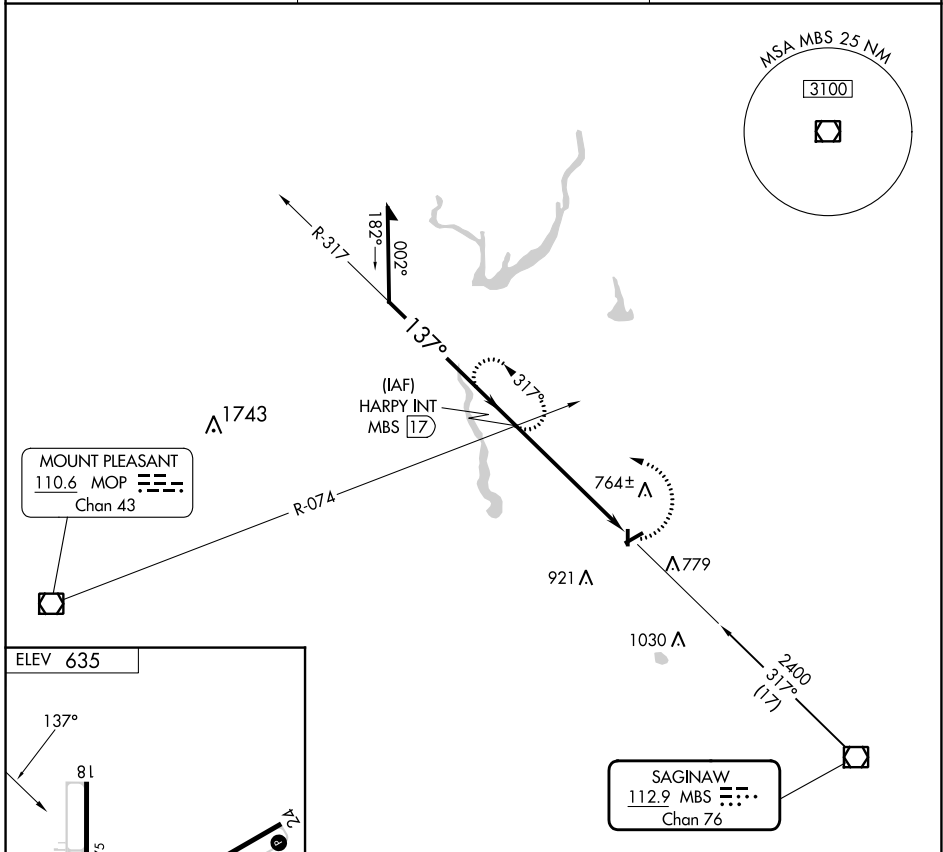
VOR/DME MBS 112.9 Chan 76	APP CRS 137°	Rwy Idg TDZE Apt Elev 635	N/A N/A 635
---	------------------------	--	--

VOR-A
JACK BARSTOW (IKW)

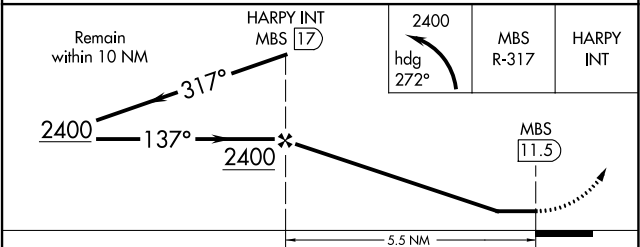
⚠ When local altimeter setting not received, use MBS Intl altimeter setting and increase all MDA 40 feet. Circling Rwy 18, 36 NA at night.
⚠ Rwy 18, 36 helicopter visibility reduction below 1 SM NA.

MISSED APPROACH: Climbing left turn to 2400 via heading 272° and MBS VOR/DME R-317 to HARRY INT/17 DME and hold.

AWOS-3 119.525	GREAT LAKES APP CON ★ 126.45 235.625	UNICOM 122.8 (CTAF) 0
--------------------------	--	---------------------------------



FAF to MAP 5.5 NM					
Knots	60	90	120	150	180
Min:Sec	5:30	3:40	2:45	2:12	1:50



CATEGORY	A	B	C	D
CIRCLING	1140-1	505 (600-1)	1240-1¾ 605 (700-1¾)	NA

MIDLAND, MICHIGAN
Amdt 7B 22APR21

43°40'N-84°16'W

JACK BARSTOW (IKW)
VOR-A

EC-1, 11 JUL 2024 to 08 AUG 2024

EC-1, 11 JUL 2024 to 08 AUG 2024