

WAAS CH <b>57913</b> W33A	APP CRS <b>330°</b>	Rwy Idg TDZE Apt Elev	<b>5700</b> <b>831</b> <b>833</b>
---------------------------------	------------------------	-----------------------------	---

# RNAV (GPS) RWY 33

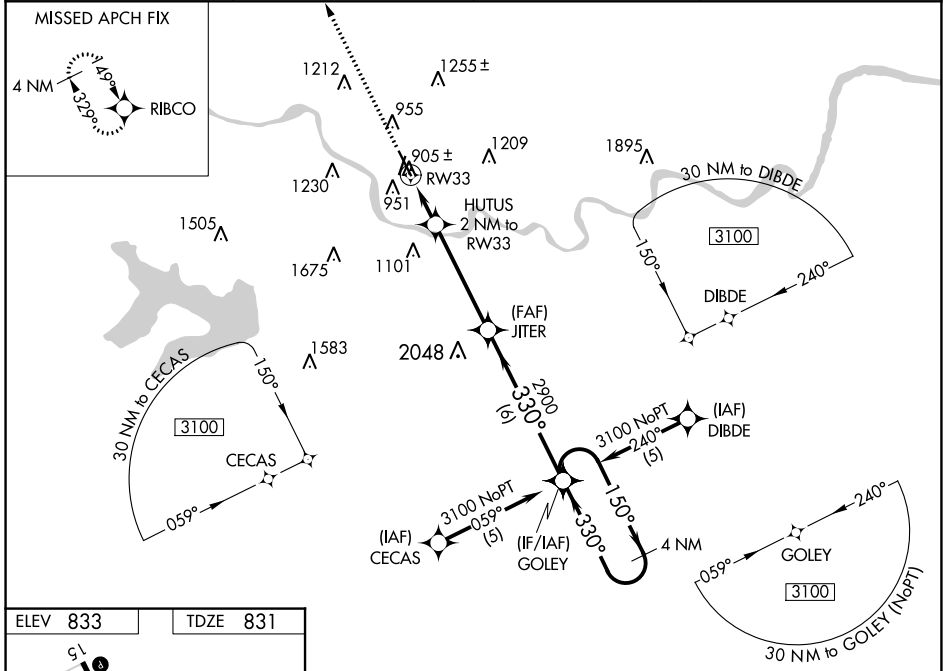
LAWRENCE RGNL (LWC)

**⚠** For uncompensated Baro-VNAV systems, LNAV/VNAV NA below -16°C (4°F) or above 54°C (130°F). DME/DME RNP-0.3 NA. When local altimeter setting not received, use Philip Billard Muni altimeter setting and increase LPV DA to 1083 feet, increase LNAV/VNAV DA to 1252 feet and all visibilities ¼ SM; increase all MDAs 60 feet and visibility Cat C ¼ SM. Baro-VNAV and VDP NA when using Philip Billard Muni altimeter setting.

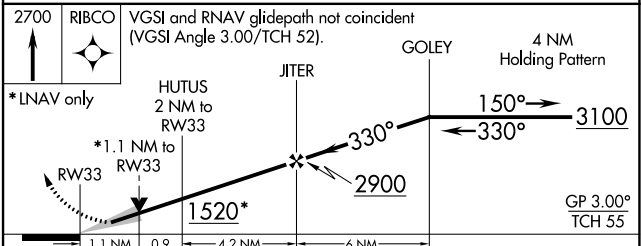
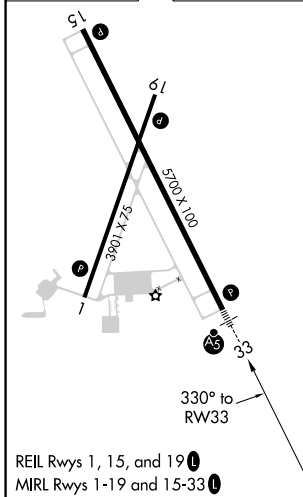


**MISSED APPROACH:**  
Climb to 2700 direct RIBCO and hold.

ASOS <b>121.225</b>	KANSAS CITY CENTER <b>123.8 343.7</b>	CLNC DEL <b>121.825</b>	UNICOM <b>123.0 (CTAF) 1</b>
------------------------	--	----------------------------	---------------------------------



ELEV <b>833</b>	TDZE <b>831</b>
-----------------	-----------------



CATEGORY	A	B	C	D
LPV DA	1031-½	200 (200-½)		NA
LNAV/VNAV DA	1200-¾	369 (400-¾)		NA
LNAV MDA	1220-½	389 (400-½)		NA
CIRCLING	1420-1 587 (600-1)	1480-1 647 (700-1)	1620-2¼ 787 (800-2¼)	NA

NC-2, 11 JUL 2024 to 08 AUG 2024

NC-2, 11 JUL 2024 to 08 AUG 2024