

WAAS CH <b>53418</b> <b>W20A</b>	APP CRS <b>197°</b>	Rwy Idg TDZE <b>372</b> Apt Elev <b>372</b>	<b>6483</b>
--	------------------------	---	-------------

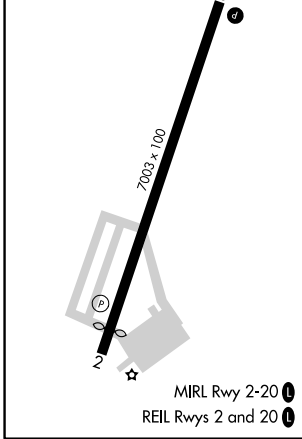
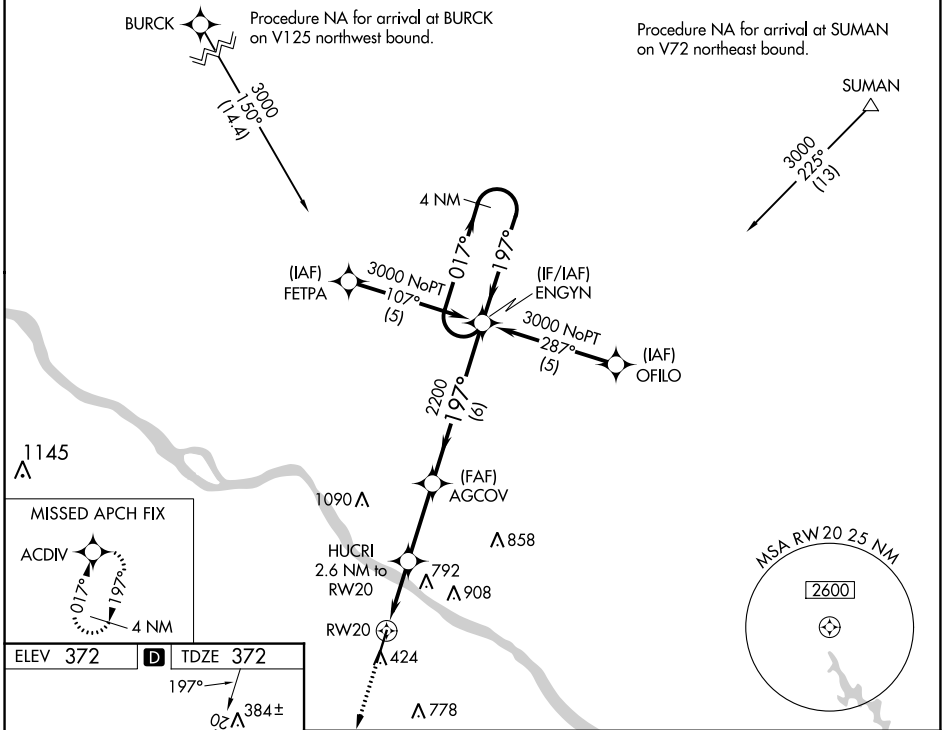
# RNAV (GPS) RWY 20

PERRYVILLE RGNL (PCD)

**⚠** For uncompensated Baro-VNAV systems, LNAV/VNAV NA below -15°C (5°F) or above 48°C (118°F). DME/DME RNP-0.3 NA.  
**⚠** Rwy 20 helicopter visibility reduction below ¾ SM NA.

MISSED APPROACH: Climb to 3000 direct ACDIV and hold.

AWOS-3PT <b>118.95</b>	KANSAS CITY CENTER <b>127.475 346.275</b>	UNICOM <b>122.8 (CTAF) ①</b>
---------------------------	--	---------------------------------



ELEV 372	<b>D</b>	TDZE 372	197°	02°	384±
3000	ACDIV	HUCRI 2.6 NM to RW20	AGCOV	ENGYN	4 NM Holding Pattern
*LNAV only		1.8 NM to RW20	2200	197°	017°
RW20		1240*	2200	3000	GP 3.00° TCH 45
1.8	0.8	2.9 NM	6 NM		
CATEGORY	A	B	C	D	
LPV DA	622-1 250 (300-1)				
LNAV/VNAV DA	697-1½ 325 (400-1½)				
LNAV MDA	980-1	608 (700-1)	980-1¾	608 (700-1¾)	
CIRCLING	980-1 608 (700-1)	1000-1 628 (700-1)	1260-2¾ 888 (900-2¾)	1260-3 888 (900-3)	

NC-3, 11 JUL 2024 to 08 AUG 2024

NC-3, 11 JUL 2024 to 08 AUG 2024