

APP CRS	Rwy Idg	N/A
050°	TDZE	N/A
	Apt Elev	926

# RNAV (GPS)-A

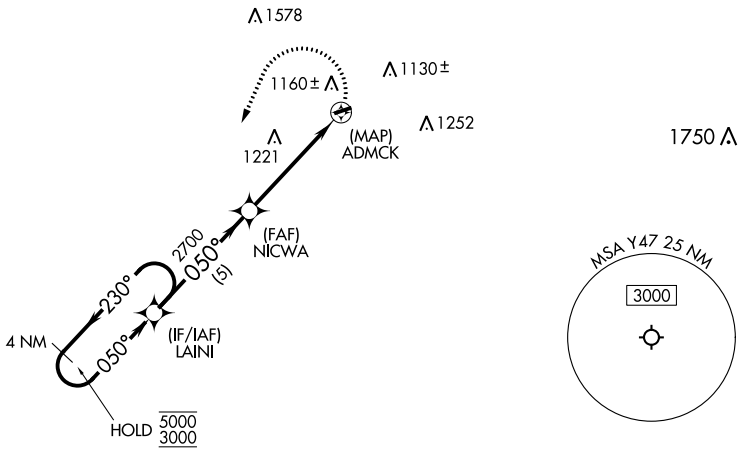
OAKLAND SOUTHWEST (Y47)

RNP APCH - GPS.

**⚠** Procedure NA at night. Rwy 8 and 26 helicopter visibility reduction below 1 SM NA. Use Detroit Willow Run altimeter setting.

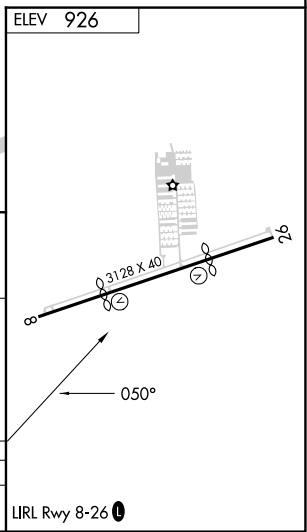
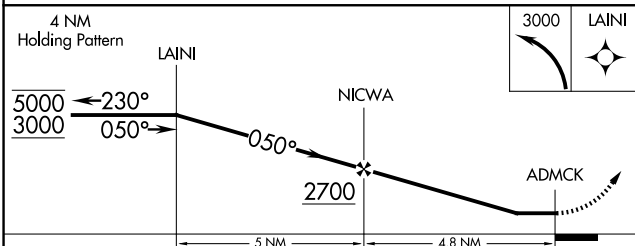
**MISSED APPROACH:** Climbing left turn to 3000 direct LAINI and hold.

YIP ASOS <b>127.425</b>	DETROIT APP CON <b>132.35 284.0</b>	UNICOM <b>122.7 (CTAF) 0</b>
----------------------------	--	---------------------------------



EC-1, 11 JUL 2024 to 08 AUG 2024

EC-1, 11 JUL 2024 to 08 AUG 2024



CATEGORY	A	B	C	D
CIRCLING	1540-1 614 (700-1)	1580-1 654 (700-1)	NA	

LIRL Rwy 8-26 0