

WAAS CH <b>99436</b> <b>W35A</b>	APP CRS <b>354°</b>	Rwy Idg TDZE Apt Elev	<b>5506</b> <b>1155</b> <b>1160</b>
--	------------------------	-----------------------------	---

# RNAV (GPS) RWY 35

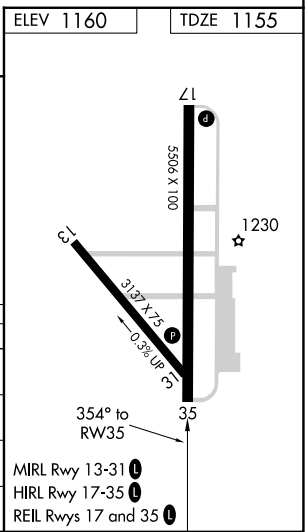
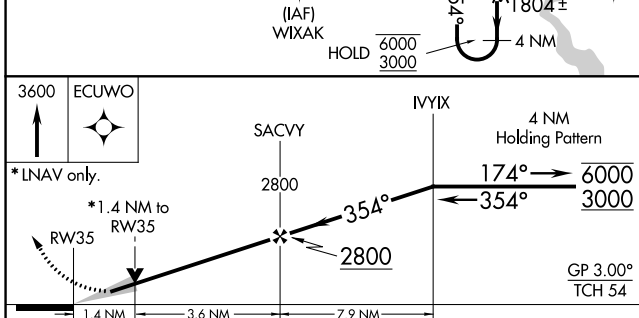
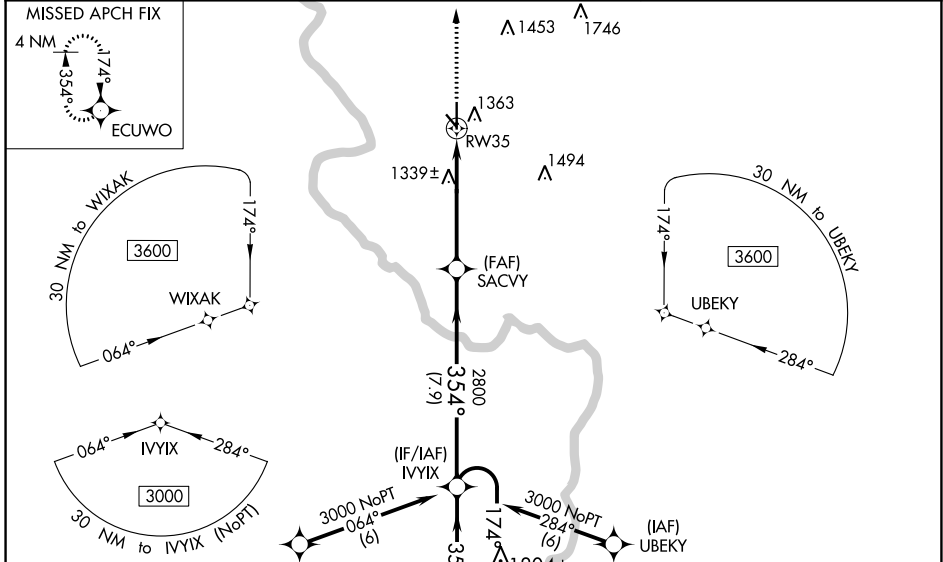
STROTHER FLD (WLD)

RNP APCH.

**⚠** Baro-VNAV and VDP NA when using Wichita Dwight D Eisenhower NH altimeter setting.  
**⚠** For uncompensated Baro-VNAV systems, LNAV/VNAV NA below -15°C or above 54°C.  
 When local altimeter setting not received, use Wichita Dwight D Eisenhower NH altimeter setting: increase LPV DA to 1509 feet and all visibilities ¼ SM; increase LNAV/VNAV DA to 1557 feet and all visibilities ¼ SM; increase all MDA 120 feet, LNAV Cat C visibility ⅓ SM and Circling Cat C visibility ¼ SM.

MISSED APPROACH:  
Climb to 3600 direct ECUWO and hold.

ASOS <b>118.025</b>	KANSAS CITY CENTER <b>127.8 319.1</b>	UNICOM <b>122.8 (CTAF) 0</b>
------------------------	--	---------------------------------



CATEGORY	A	B	C	D
LPV DA	1405-¾	250 (300-¾)		NA
LNAV/VNAV DA	1453-1	298 (300-1)		NA
LNAV MDA	1640-1	485 (500-1)	1640-1⅓ 485 (500-1⅓)	NA
<b>C</b> CIRCLING	1680-1	520 (600-1)	1680-1½ 520 (600-1½)	NA

NC-2, 11 JUL 2024 to 08 AUG 2024

NC-2, 11 JUL 2024 to 08 AUG 2024