

WAAS CH 82704 W35A	APP CRS 348°	Rwy ldg 5010 TDZE 951 Apt Elev 951
--	------------------------	---

RNAV (GPS) RWY 35

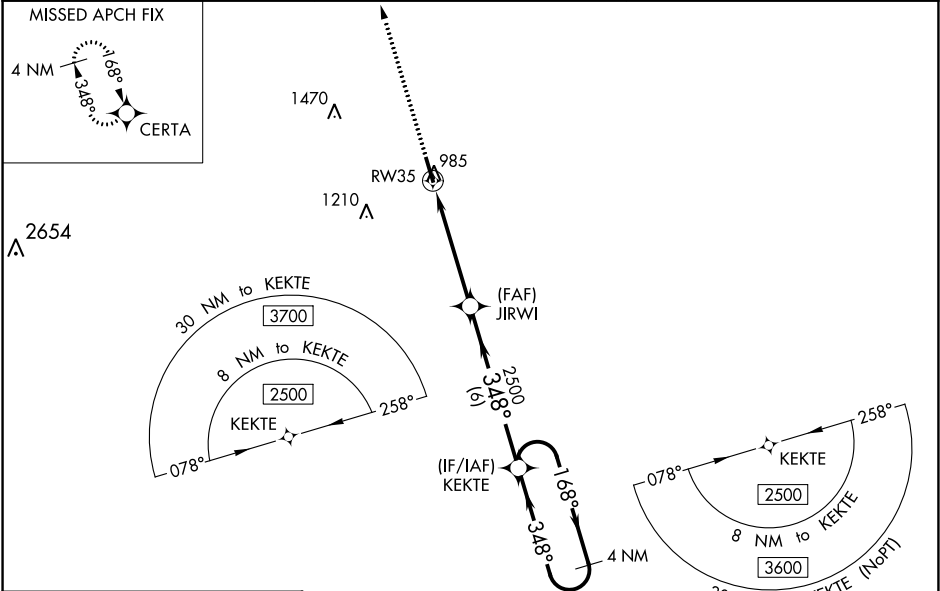
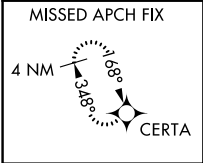
JACKSON COUNTY (JCA)

RNP APCH-GPS.

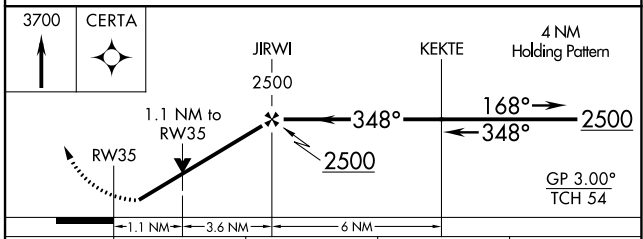
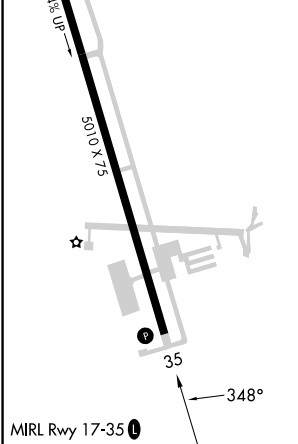
⚠ For uncompensated Baro-VNAV systems, LNAV/VNAV NA below -16°C or above 54°C.
⚠ Circling NA for Cat D west of Rwy 17-35. Baro-VNAV and VDP NA when using Winder altimeter setting. Rwy 17 helicopter visibility reduction below ¼ SM NA. When local altimeter setting not received, use Winder altimeter setting; increase LPV DA to 1232 feet and visibility all Cats ½ SM; increase LNAV/VNAV DA to 1241 feet and visibility all Cats ½ SM; increase all MDAs 40 feet and LNAV visibility Cats C/D ½ SM.

MISSED APPROACH:
Climb to 3700 direct CERTA and hold.

AWOS-3PT 118.125	ATLANTA APP CON* 132.475 291.1	UNICOM 122.975 (CTAF) ①
----------------------------	--	-----------------------------------



ELEV 951	TDZE 951
-----------------	-----------------



CATEGORY	A	B	C	D
LPV DA		1201- ⁷ / ₈	250 (300- ⁷ / ₈)	
LNAV/VNAV DA		1210- ⁷ / ₈	259 (300- ⁷ / ₈)	
LNAV MDA	1340-1	389 (400-1)	1340-1 ¹ / ₈	389 (400-1 ¹ / ₈)
C CIRCLING	1440-1	489 (500-1)	1580-1 ³ / ₄ 629 (700-1 ³ / ₄)	1580-2 629 (700-2)

SE-4, 11 JUL 2024 to 08 AUG 2024

SE-4, 11 JUL 2024 to 08 AUG 2024