

VOR/DME AHN <b>116.95</b> Chan <b>116</b> (Y)	APP CRS <b>319°</b>	Rwy Idg <b>5010</b> TDZE <b>951</b> Apt Elev <b>951</b>
-----------------------------------------------------	------------------------	---------------------------------------------------------------

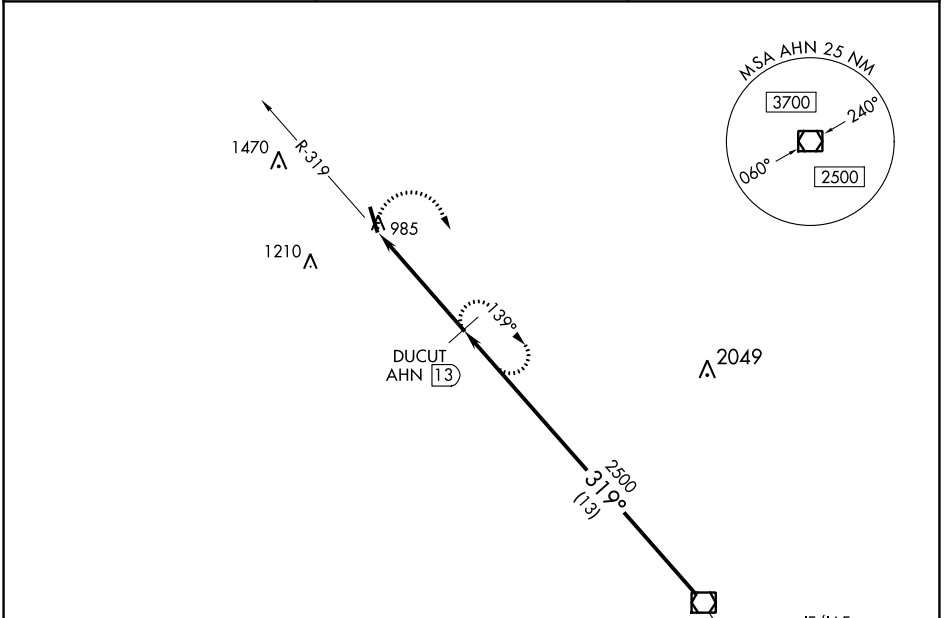
# VOR/DME RWY 35

JACKSON COUNTY (JCA)

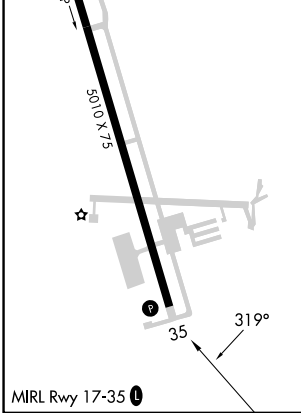
**⚠** Night Landing: Rwy 35 NA. Circling NA for Cat D west of Rwy 17-35.  
**⚠** Helicopter visibility reduction below 1 SM NA. When local altimeter setting not received, use Winder altimeter setting and increase all MDA 40 feet and S-35 Cats C/D visibility 1/8 mile and Circling Cat C visibility 1/4 mile.

MISSED APPROACH: Climbing right turn to 2500 on heading 210° and AHN VOR/DME R-319 to DUCUT/AHN 13 DME and hold.

AWOS-3PT <b>118.125</b>	ATLANTA APP CON ★ <b>132.475 291.1</b>	UNICOM <b>122.975</b> (CTAF) <b>0</b>
----------------------------	-------------------------------------------	------------------------------------------



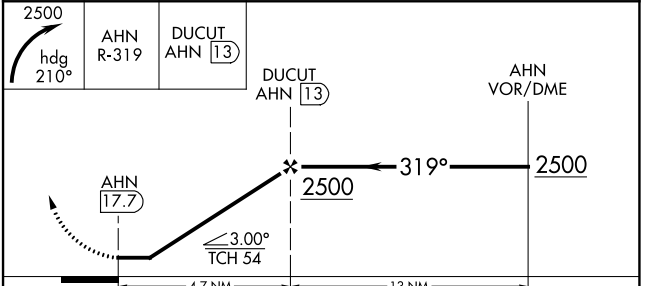
ELEV <b>951</b>	TDZE <b>951</b>
-----------------	-----------------



JEFFERSON, GEORGIA  
 Amdt 3A 15SEP16

Procedure NA for arrivals on AHN VOR/DME airway radials 291 CW 340.

IF/IAF  
 ATHENS  
 116.95 AHN Chan 116 (Y)



CATEGORY	A	B	C	D
S-35	1380-1	429 (500-1)	1380-1 1/4	429 (500-1 1/4)
<b>C</b> CIRCLING	1440-1	489 (500-1)	1520-1 1/2 569 (600-1 1/2)	1520-2 569 (600-2)

SE-4, 11 JUL 2024 to 08 AUG 2024

SE-4, 11 JUL 2024 to 08 AUG 2024