

APP CRS	Rwy Idg	<b>2855</b>
<b>230°</b>	TDZE	<b>142</b>
	Apt Elev	<b>150</b>

# RNAV (GPS) RWY 23

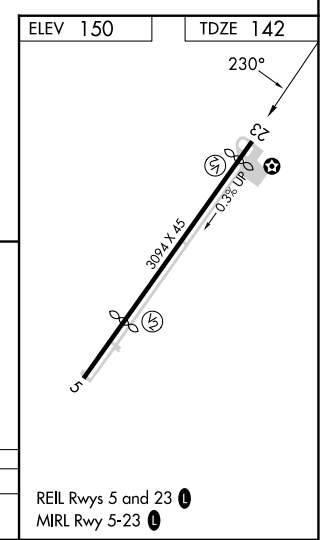
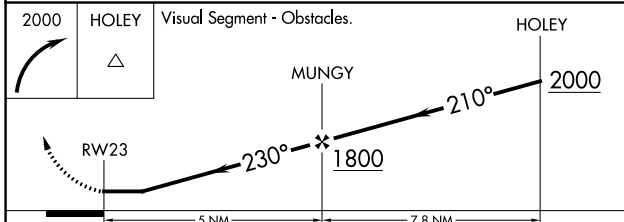
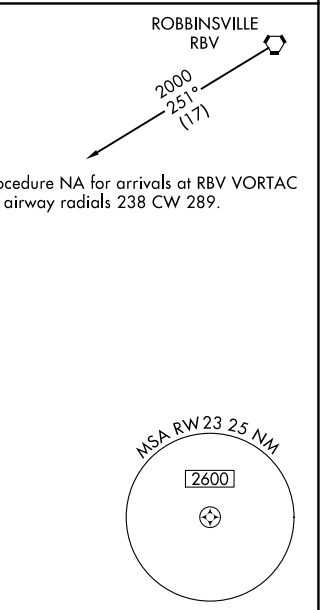
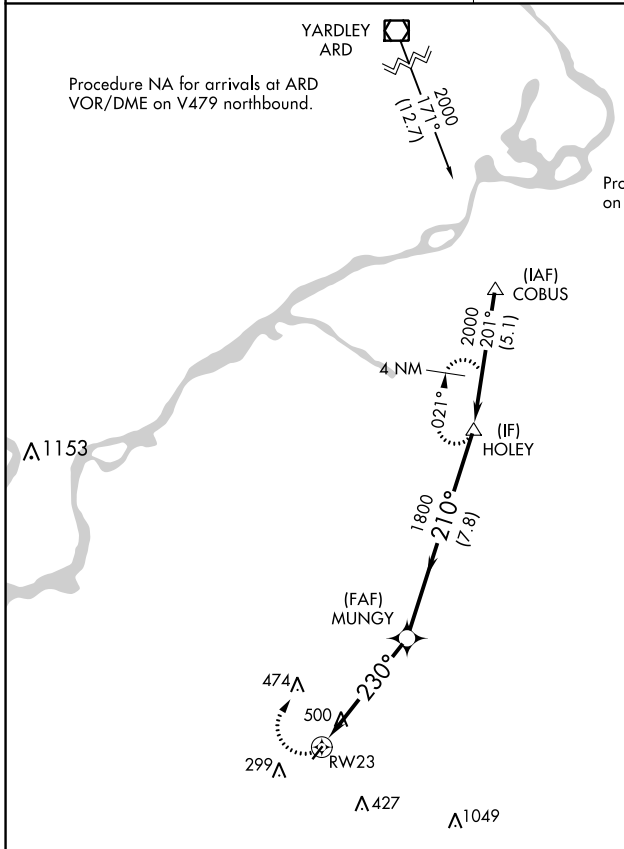
PINE VALLEY (19N)

RNP APCH.  
 ▼ Rwy 23 helicopter visibility reduction below 1 SM NA. Use Mount Holly altimeter setting; if not received use Philadelphia Intl altimeter setting and increase all MDA 20 feet. Procedure NA at night.  
 ▲ NA

MISSED APPROACH: Climbing right turn to 2000 direct HOLEY and hold.

MC GUIRE APP CON  
**126.475 363.8**

UNICOM  
**123.0 (CTAF) 1**



CATEGORY	A	B	C	D
LNAV MDA	840-1	698 (700-1)		NA

REIL Rws 5 and 23 1  
 MIRL Rwy 5-23 1

PINE VALLEY (19N)  
**RNAV (GPS) RWY 23**