

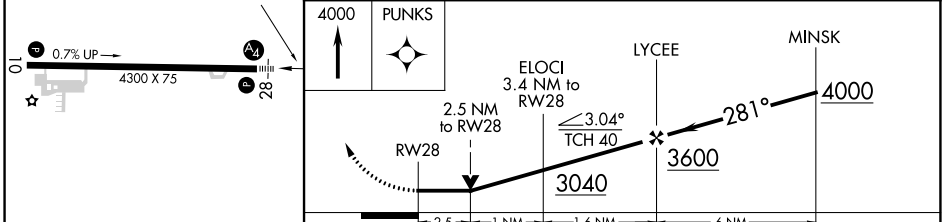
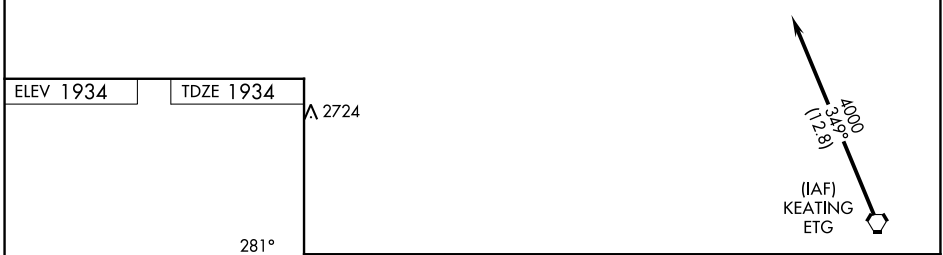
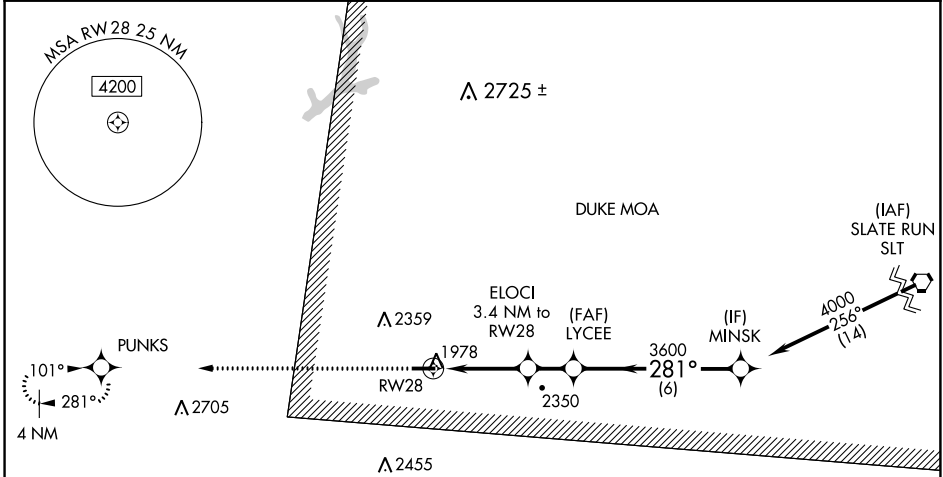
APP CRS	Rwy Idg	<b>4300</b>
<b>281°</b>	TDZE	<b>1934</b>
	Apt Elev	<b>1934</b>

# RNAV (GPS) RWY 28

ST MARYS MUNI (OYM)

RNP APCH - GPS.		MALS 	MISSED APPROACH: Climb to 4000 direct PUNKS and hold.
Rwy 28 helicopter visibility reduction below 3/4 SM NA. Inop table does not apply to LNAV Cat A. VDP NA when using Bradford altimeter setting. When local altimeter setting not received, use Bradford altimeter setting and increase all MDA 240 feet, LNAV visibility Cats B/C/D 1/2 SM, and Circling visibility Cats B/C 1/2 SM. For inop ALS increase LNAV visibility Cat C/D to 2 1/2 SM. For inop ALS when using Bradford altimeter setting, increase LNAV visibility Cat C/D to 3 SM.	-36°C 		

AWOS-3P <b>118.05</b>	CLEVELAND CENTER <b>126.725 291.65</b>	ALTOONA CLNC DEL <b>122.4</b>	UNICOM <b>122.7 (CTAF)</b>
--------------------------	---	----------------------------------	-------------------------------



CATEGORY	A	B	C	D
LNAV MDA	2760-1	826 (900-1)	2760-2	826 (900-2)
CIRCLING	2760-1 1/4	826 (900-1 1/4)	2760-2 1/2 826 (900-2 1/2)	2840-3 906 (1000-3)

NE-4, 11 JUL 2024 to 08 AUG 2024

NE-4, 11 JUL 2024 to 08 AUG 2024