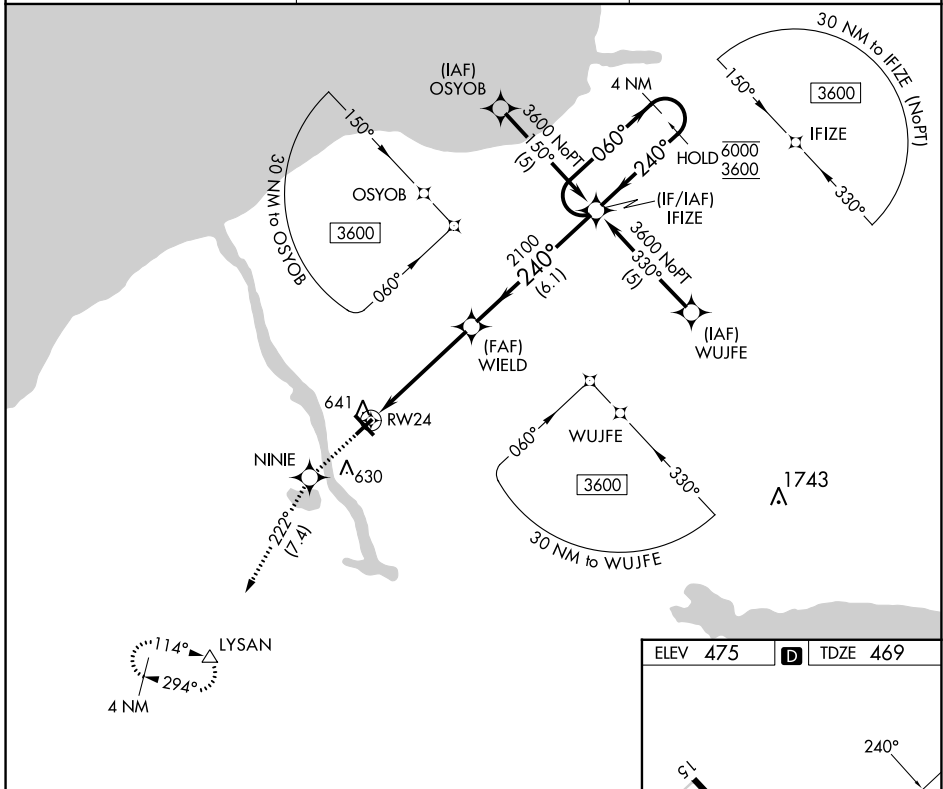


APP CRS 240°	Rwy Idg 3997
	TDZE 469
	Apt Elev 475

RNAV (GPS) RWY 24

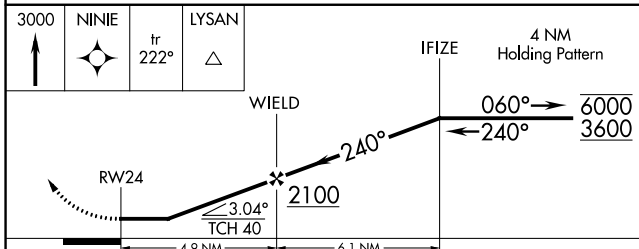
OSWEGO COUNTY (FZY)

RNP APCH.		MISSED APPROACH: Climb to 3000 direct NINIE and on track 222° to LYSAN and hold.
Rwy 24 helicopter visibility reduction below 1 SM NA.		
ASOS 119.275	SYRACUSE APP CON 126.125 269.125	UNICOM 123.0 (CTAF) 0

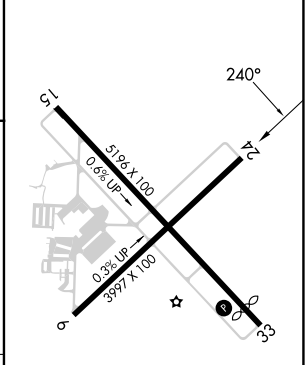


NE-2, 11 JUL 2024 to 08 AUG 2024

NE-2, 11 JUL 2024 to 08 AUG 2024



ELEV 475	D TDZE 469
----------	-------------------



CATEGORY	A	B	C	D
LNVA MDA	960-1 491 (500-1)		960-1 491 (500-1 3/8)	960-1 491 (500-1 1/2)
CIRCLING	1000-1 525 (600-1)		1000-1 525 (600-1 1/2)	1040-2 565 (600-2)

- MIRL Rwy 6-24 **0**
- HIRL Rwy 15-33 **0**
- REIL Rwy 15 and 33 **0**
- REIL Rwy 6 and 24 **0**