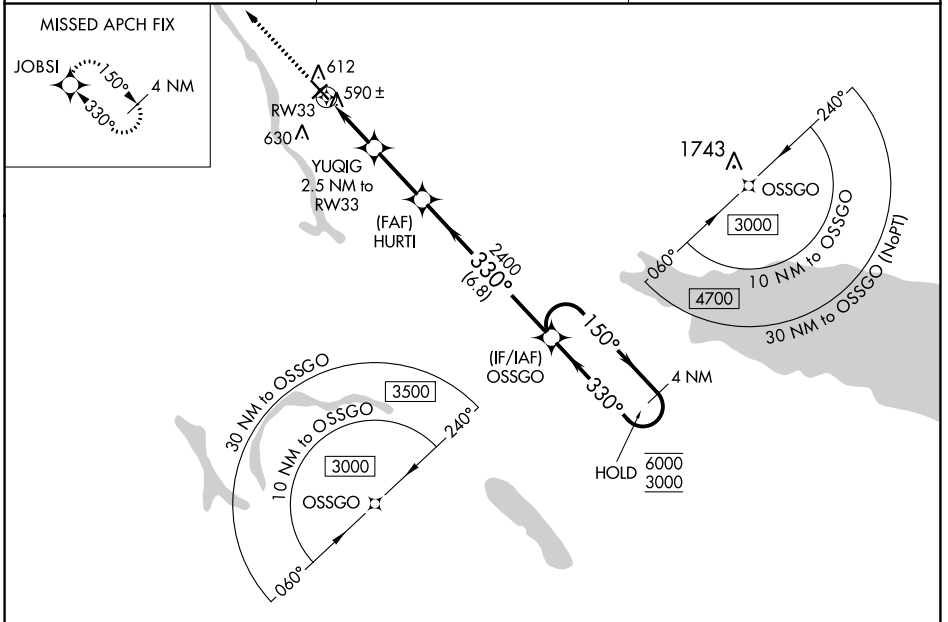


WAAS CH <b>82520</b> <b>W33A</b>	APP CRS <b>330°</b>	Rwy Idg <b>4782</b> TDZE <b>471</b> Apt Elev <b>475</b>
--	------------------------	---

# RNAV (GPS) RWY 33

OSWEGO COUNTY (FZY)

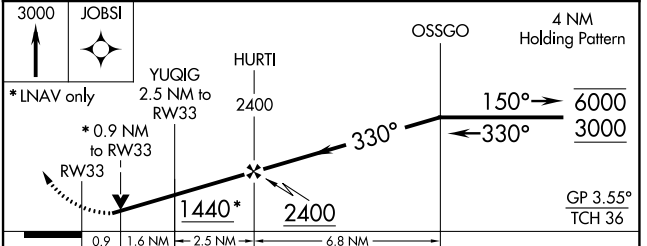
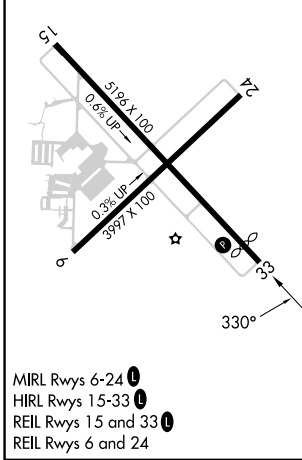
RNP APCH.		MISSED APPROACH: Climb to 3000 direct JOBSI and hold.
Rwy 33 helicopter visibility reduction below 3/4 SM NA. For uncompensated Baro-VNAV systems, LNAV/VNAV NA below -22°C or above 54°C.		
ASOS <b>119.275</b>	SYRACUSE APP CON <b>126.125 269.125</b>	UNICOM <b>123.0 (CTAF)</b>



NE-2, 11 JUL 2024 to 08 AUG 2024

NE-2, 11 JUL 2024 to 08 AUG 2024

ELEV 475	<b>D</b>	TDZE 471
----------	----------	----------



CATEGORY	A	B	C	D
LPV DA	810-1 339 (400-1)			NA
LNAV/VNAV DA	771-7/8 300 (300-7/8)			NA
LNAV MDA	840-1 369 (400-1)			NA
<b>C</b> CIRCLING	920-1 445 (500-1)	940-1 465 (500-1)	960-1 1/2 485 (500-1 1/2)	NA

MIRL Rwys 6-24  
HIRL Rwys 15-33  
REIL Rwys 15 and 33  
REIL Rwys 6 and 24