

WAAS CH 90423 W05A	APP CRS 054°	Rwy Idg TDZE 216 Apt Elev 216	6503
--	------------------------	---	-------------

RNAV (GPS) RWY 5

LAURINBURG/MAXTON (MEB)

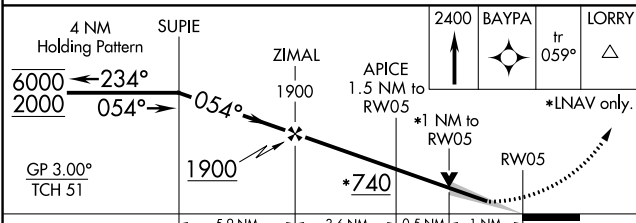
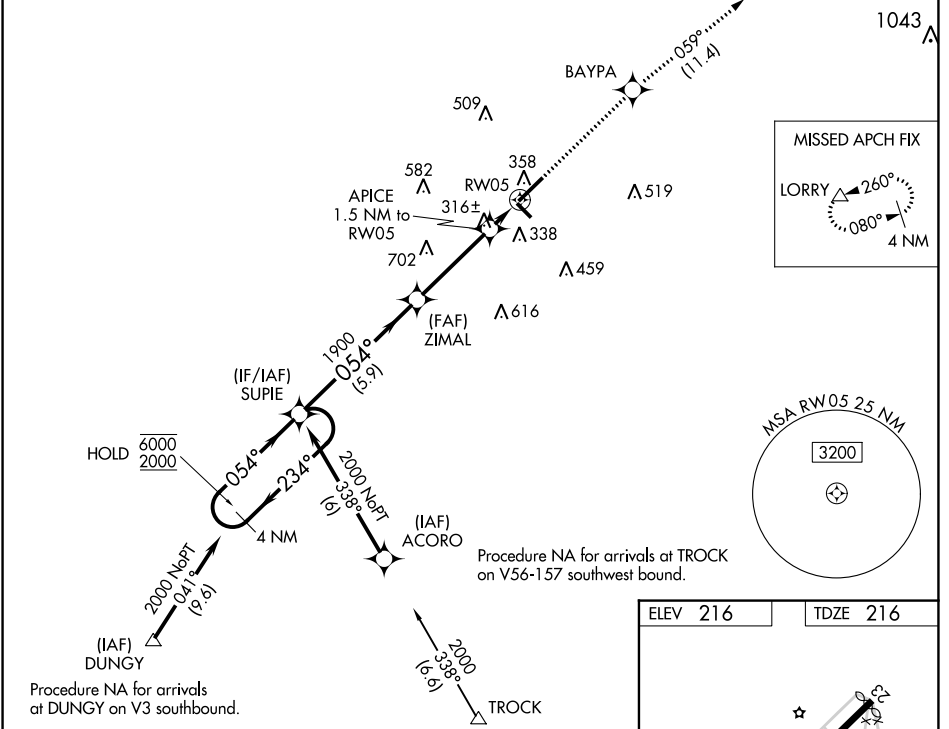
RNP APCH.

⚠ Circling to Rwy 13 and 31 NA at night. For uncompensated Baro-VNAV systems, LNAV/VNAV NA below -15°C or above 42°C. For inop ALS, increase LNAV/VNAV all Cats visibility to ¼ SM, and LNAV Cat C/D visibility to 1 SM.

MALS R

MISSED APPROACH: Climb to 2400 direct BAYPA and on track 059° to LORRY and hold.

ASOS 134,125	FAYETTEVILLE APP CON 127.8 343,725	GCO 135,075	UNICOM 122.8 (CTAF) 0
------------------------	--	-----------------------	---------------------------------



ELEV 216	TDZE 216
----------	----------

Diagram of RWY 5 showing runway dimensions (6503 x 100) and HIRL (5-23). Approach angle is 054° to RW05.

CATEGORY	A	B	C	D
LPV DA		416-½	200 (200-½)	
LNAV/VNAV DA		472-½	256 (300-½)	
LNAV MDA	580-½	364 (400-½)	580-⅝	364 (400-⅝)
CIRCLING	740-1	524 (600-1)	780-1½ 564 (600-1½)	1020-2½ 804 (900-2½)

HIRL Rwy 5-23 0

SE-2, 11 JUL 2024 to 08 AUG 2024

SE-2, 11 JUL 2024 to 08 AUG 2024