

WAAS CH <b>53711</b> <b>W26A</b>	APP CRS <b>256°</b>	Rwy Idg TDZE <b>24</b> Apt Elev <b>26</b>	<b>4997</b>
--	------------------------	---	-------------

# RNAV (GPS) RWY 26

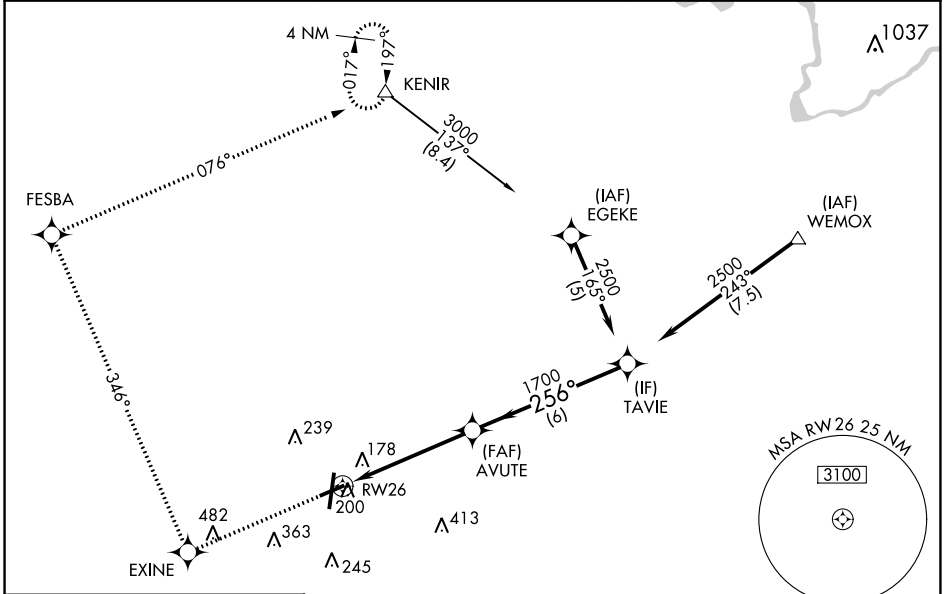
PITT-GREENVILLE (PGV)

RNP APCH - GPS.

▼ Baro-VNAV NA when using Washington altimeter setting. For uncompensated Baro-VNAV systems, LNAV/VNAV NA below -15°C or above 48°C. Rwy 26 helicopter visibility reduction below 3/4 SM NA. When local altimeter setting not received use Washington altimeter setting and increase LPV DA to 376 feet, visibility all Cats 1/8 SM; increase LNAV/VNAV DA to 505, visibility all Cats 1/8 SM; increase all MDAs 60 feet, LNAV visibility Cat C and D and Circling Cat D 1/4 SM.

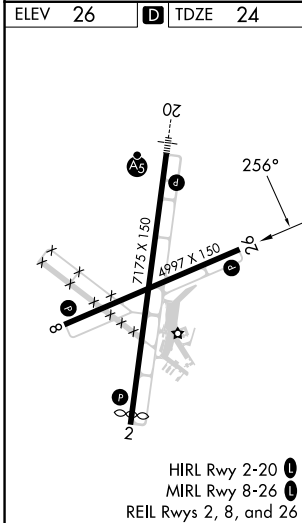
MISSED APPROACH: Climb to 3000 direct EXINE and via 346° track to FESBA and via 076° track to KENIR and hold.

AWOS-3 <b>128.425</b>	WASHINGTON CENTER <b>123.85 279.65</b>	UNICOM <b>122.8 (CTAF) 0</b>
--------------------------	---	---------------------------------



SE-2, 11 JUL 2024 to 08 AUG 2024

SE-2, 11 JUL 2024 to 08 AUG 2024



<p>3000</p> <p>↑</p>		<p>EXINE</p> <p>✧</p>	<p>tr</p> <p>346°</p>	<p>FESBA</p> <p>✧</p>	<p>tr</p> <p>076°</p>	<p>KENIR</p> <p>△</p>	<p>VGSI and descent angles not coincident (VGSI Angle 3.00/TCH 40).</p>
<p>AVUTE</p> <p>✧</p>						<p>TAVIE</p> <p>✧</p>	<p>Procedure Turn NA</p>
<p>RWY 26</p> <p>↙</p>						<p>2500</p> <p>↘</p>	<p>GP 3.00° TCH 45</p>
<p>5.1 NM</p>		<p>6 NM</p>					
CATEGORY	A	B	C	D			
LPV DA	335-7/8		311 (400-7/8)				
LNAV/VNAV DA	464-1 1/4		440 (500-1 1/4)				
LNAV MDA	520-1	496 (500-1)	520-1 3/8	496 (500-1 3/8)			
CIRCLING	600-1 574 (600-1)	620-1 594 (600-1)	700-2 674 (700-2)	800-2 1/2 774 (800-2 1/2)			