

WAAS CH <b>99313</b> <b>W19A</b>	APP CRS <b>190°</b>	Rwy Idg TDZE Apt Elev	<b>6604</b> <b>91</b> <b>91</b>
--	------------------------	-----------------------------	---------------------------------------

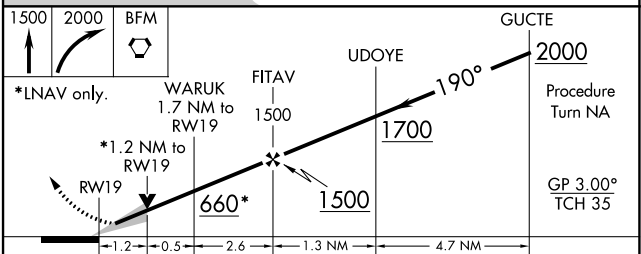
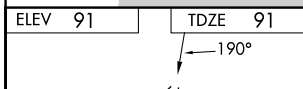
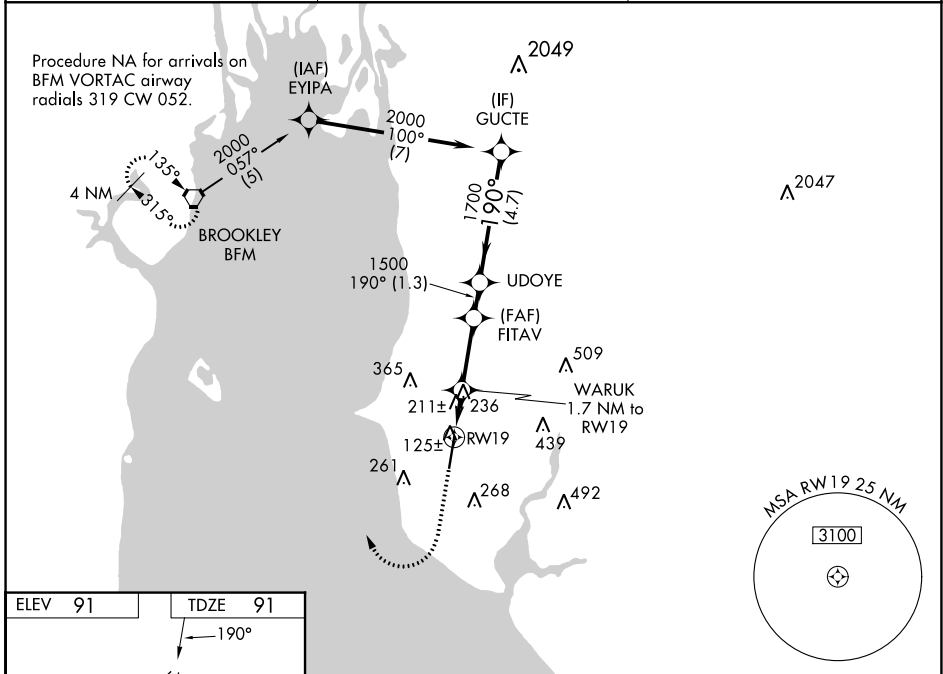
# RNAV (GPS) RWY 19

H L SONNY CALLAHAN (CQF)

**⚠** Baro-VNAV NA when using Mobile Intl altimeter setting. For uncompensated Baro-VNAV systems, LNAV/VNAV NA below -15°C (5°F) or above 43°C (109°F).  
**⚠** DME/DME RNP-0.3 NA. VDP NA with Mobile Intl altimeter setting. When local altimeter setting not received, use Mobile Intl altimeter setting and increase LPV DA to 383 feet, LNAV/VNAV DA to 555 feet and all MDA 60 feet; increase LNAV and Circling Cats C/D visibility ¼ SM.

**MISSED APPROACH:** Climb to 1500 then climbing right turn to 2000 direct BFM Vortac and hold.

AWOS-3PT <b>118.425</b>	MOBILE APP CON ★ <b>118.5 269.3</b>	UNICOM <b>123.0 (CTAF) 0</b>
----------------------------	--	---------------------------------



CATEGORY	A	B	C	D
LPV DA		341-7/8	250 (300-7/8)	
LNAV/VNAV DA		513-1½	422 (500-1½)	
LNAV MDA	500-1	409 (500-1)	500-1¾	409 (500-1¾)
CIRCLING	560-1 469 (500-1)	580-1 489 (500-1)	720-1¾ 629 (700-1¾)	740-2 649 (700-2)

SE-4, 11 JUL 2024 to 08 AUG 2024

SE-4, 11 JUL 2024 to 08 AUG 2024

HIRL Rwy 1-19 0  
REIL Rws 1 and 19 0