

FAIRHOPE, ALABAMA

AL-5522 (FAA)

23334

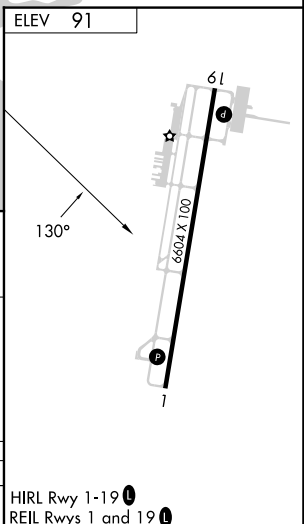
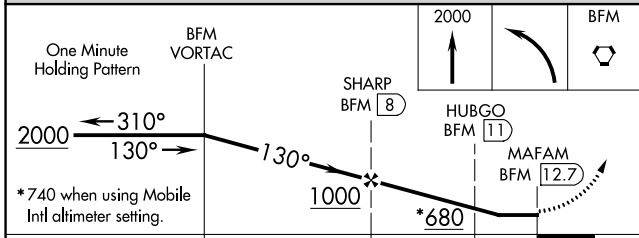
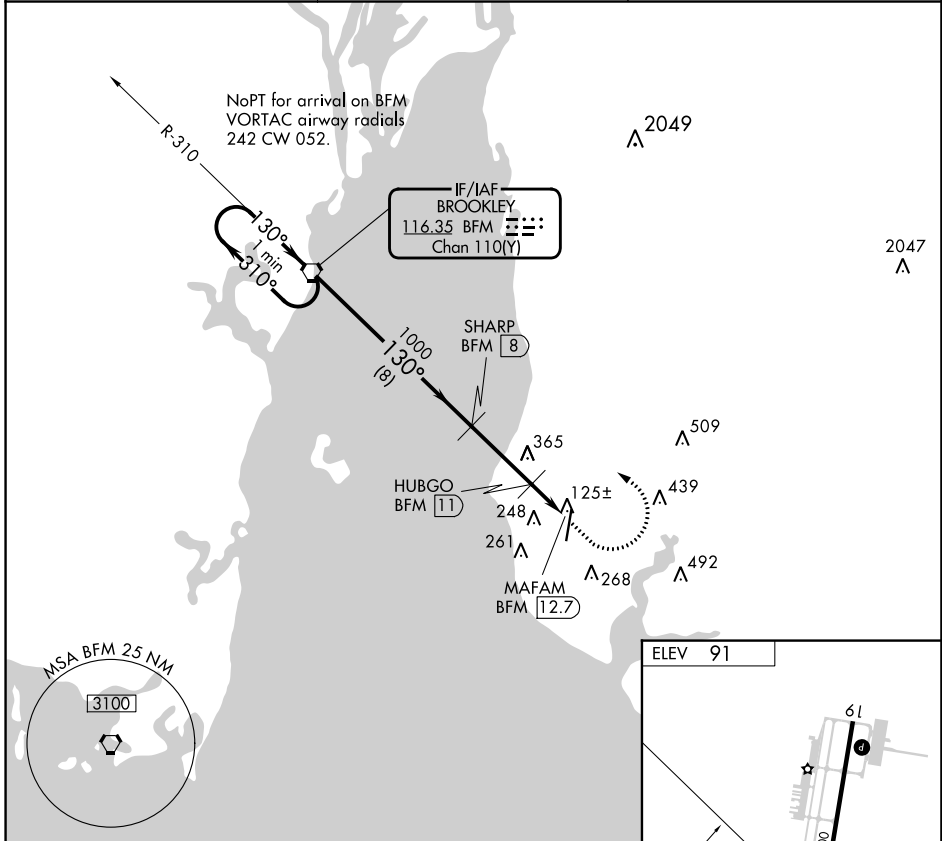
VORTAC BFM <b>116.35</b> Chan <b>110(Y)</b>	APP CRS <b>130°</b>	Rwy Idg TDZE Apt Elev	<b>N/A</b> <b>N/A</b> <b>91</b>
---	------------------------	--------------------------	---------------------------------------

**VOR/DME-A**  
H L SONNY CALLAHAN (CQF)

**⚠** When local altimeter setting not received, use Mobile Intl altimeter setting and increase all MDA 60 feet; increase Circling Cats C/D visibility ¼ SM.

**MISSED APPROACH:** Climb to 2000 then left turn direct BFM Vortac and hold.

AWOS-3PT <b>118.425</b>	MOBILE APP CON * <b>118.5 269.3</b>	UNICOM <b>123.0 (CTAF) 0</b>
----------------------------	--	---------------------------------



CATEGORY	A	B	C	D
CIRCLING	560-1 469 (500-1)	580-1 489 (500-1)	720-1¾ 629 (700-1¾)	740-2 649 (700-2)

FAIRHOPE, ALABAMA  
Amdt 7A 20MAY21

30°28'N-87°53'W

H L SONNY CALLAHAN (CQF)  
**VOR/DME-A**

SE-4, 11 JUL 2024 to 08 AUG 2024

SE-4, 11 JUL 2024 to 08 AUG 2024