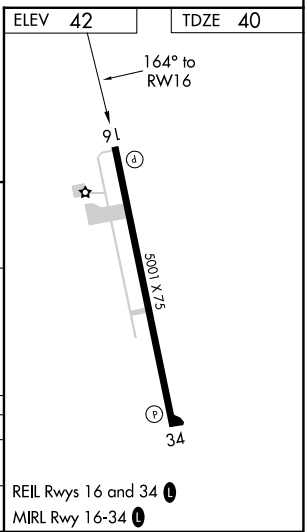
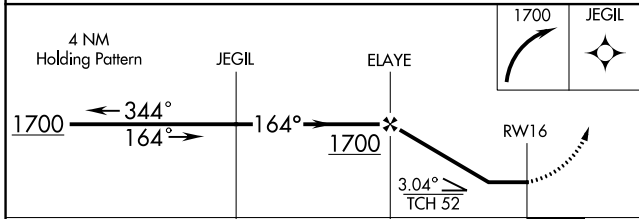
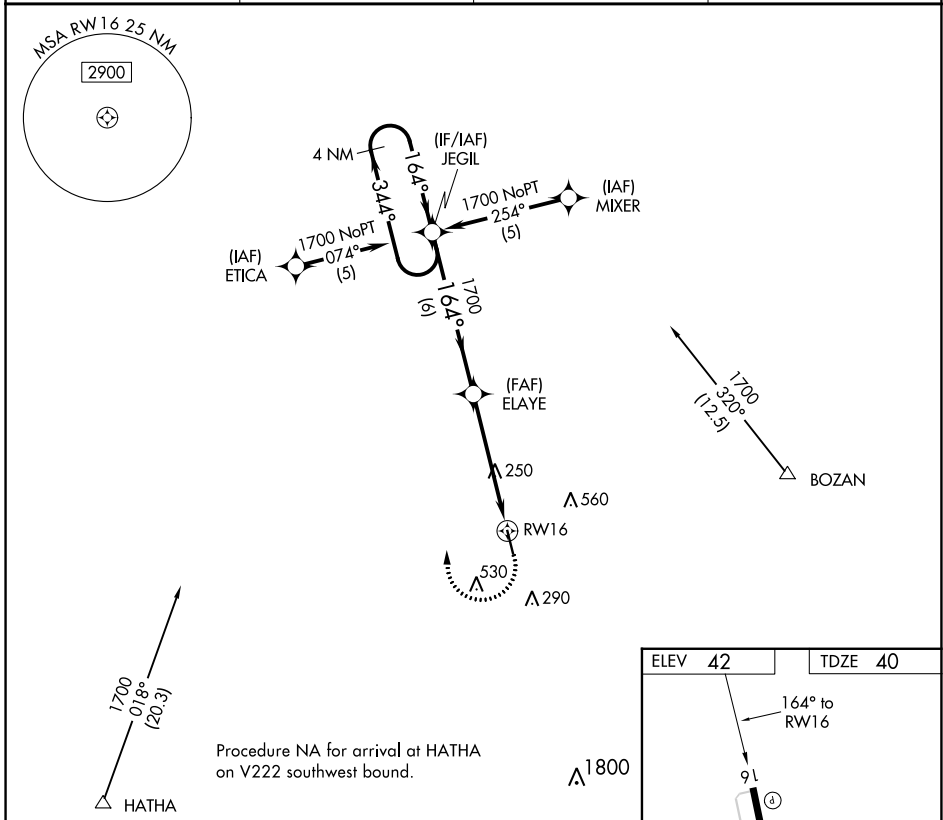


APP CRS <b>164°</b>	Rwy Idg <b>5001</b>
	TDZE <b>40</b>
	Apt Elev <b>42</b>

# RNAV (GPS) RWY 16

EUNICE (4R7)

RNP APCH.		MISSED APPROACH: Climbing right turn to 1700 direct JEGIL WP and hold.	
▼ Use Lafayette Rgnl/Paul Fournet Fld altimeter setting. ▲ NA Procedure NA at night. Rwy 16 helicopter visibility reduction below 1 SM NA.		LFT ASOS <b>134.05</b>	LAFAYETTE APP CON ★ <b>128.7 268.7</b>
		GCO <b>135.075</b>	UNICOM <b>122.8 (CTAF) ①</b>



CATEGORY	A	B	C	D
LNVA MDA	580-1	540 (600-1)	580-1½ 540 (600-1½)	NA
CIRCLING	620-1	578 (600-1)	940-2¾ 898 (900-2¾)	NA

SC-4, 11 JUL 2024 to 08 AUG 2024

SC-4, 11 JUL 2024 to 08 AUG 2024