

WAAS CH 48922 W19A	APP CRS 186°	Rwy Idg TDZE Apt Elev	6503 320 346
---------------------------------	------------------------	-----------------------------	---

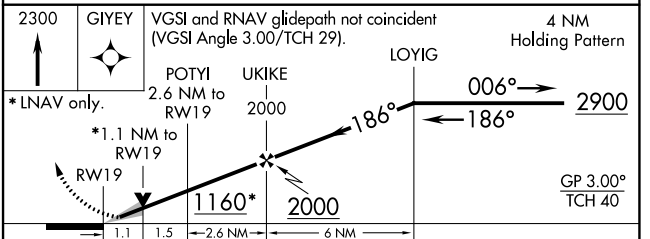
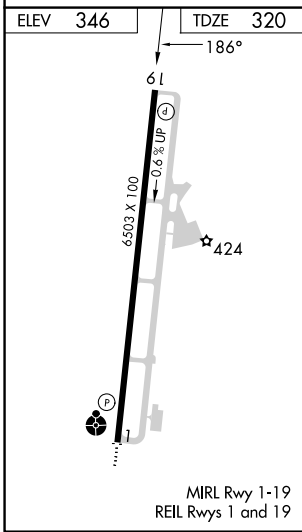
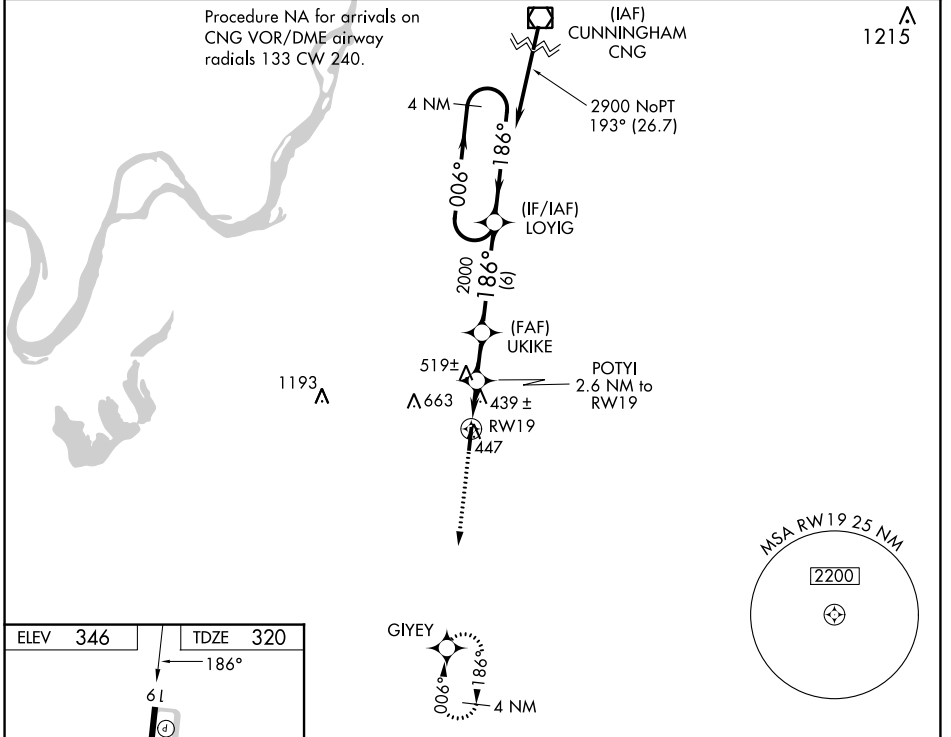
RNAV (GPS) RWY 19

EVERETT-STEWART RGNL (UCY)

NA For uncompensated Baro-VNAV systems, LNAV/VNAV NA below -15°C (5°F) or above 54°C (130°F). DME/DME RNP-0.3 NA. VDP and Baro-VNAV NA with Dyersburg altimeter setting. When local altimeter setting not received, use Dyersburg altimeter setting and increase all DA 72 feet and all MDA 80 feet, increase LPV all Cats visibility ¼ SM, LNAV/VNAV all Cats visibility ¼ SM, LNAV Cats C/D visibility ⅓ SM, and Circling Cat D visibility ¼ SM.

MISSED APPROACH: Climb to 2300 direct GIYEV and hold.

AWOS-3 135.325	MEMPHIS CENTER 133.65 292.15	UNICOM 122.7 (CTAF) 0
--------------------------	--	---------------------------------



CATEGORY	A	B	C	D
LPV DA		570-7/8	250 (300-7/8)	
LNAV/VNAV DA		719-1 3/8	399 (400-1 1/8)	
LNAV MDA		700-1	380 (400-1)	
CIRCLING	760-1 414 (500-1)	800-1 454 (500-1)	820-1 1/2 474 (500-1 1/2)	1020-2 1/4 674 (700-2 1/4)

SE-1, 11 JUL 2024 to 08 AUG 2024

SE-1, 11 JUL 2024 to 08 AUG 2024