

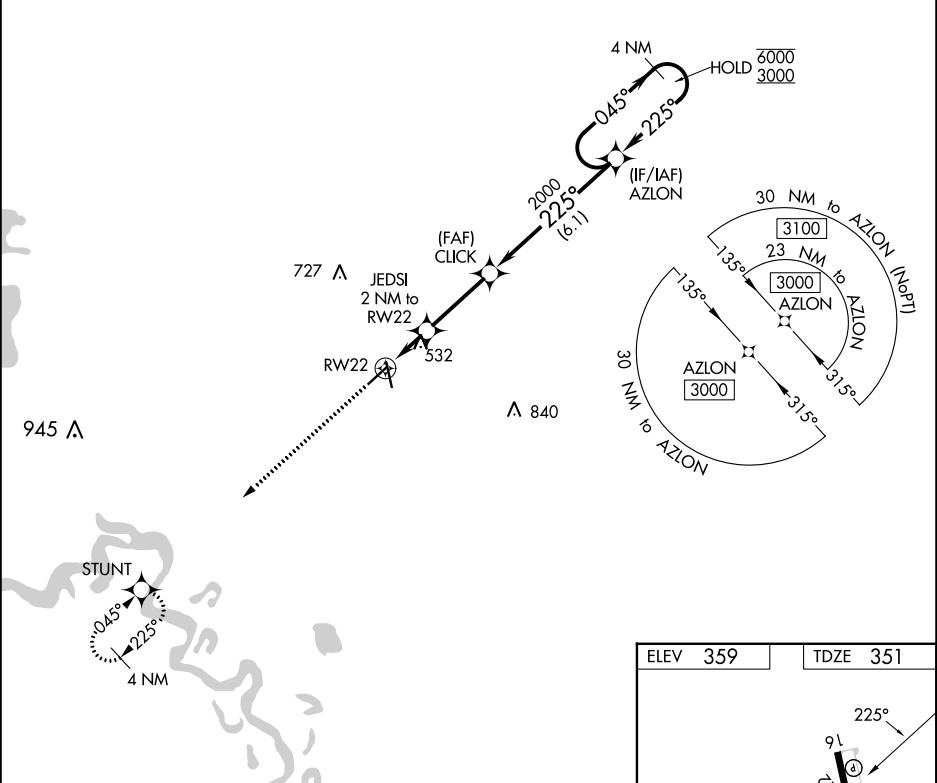
APP CRS	Rwy Idg	<b>4957</b>
<b>225°</b>	TDZE	<b>351</b>
	Apt Elev	<b>359</b>

# RNAV (GPS) RWY 22

HOPE MUNI (M18)

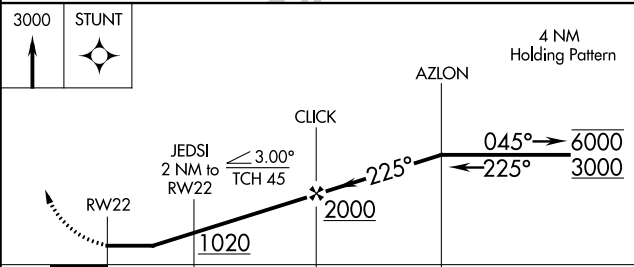
RNP APCH - GPS	Procedure NA at night. Rwy 22 helicopter visibility reduction below 1 SM NA. Use Texarkana altimeter setting.	MISSED APPROACH: Climb to 3000 direct STUNT and hold.
----------------	---	---

TXK ASOS <b>120.2</b>	FORT WORTH CENTER <b>123.925 269.475</b>	UNICOM <b>122.8 (CTAF) ①</b>
--------------------------	---	---------------------------------



SC-1, 11 JUL 2024 to 08 AUG 2024

SC-1, 11 JUL 2024 to 08 AUG 2024



ELEV 359	TDZE 351
----------	----------

The holding pattern diagram shows a 4 NM racetrack pattern. Key details include:
 

- Heading:** 225° for the inbound leg.
- Altitudes:** 6000 MSL and 3000 MSL.
- Distances:** 5.00 x 100 and 5.00 x 100 for the legs.
- Angles:** 045° and 225° for the turns.
- Other:** 0.45° UP and 0.35° UP are noted.

CATEGORY	A	B	C	D
LNAV MDA	900-1	549 (600-1)	900-1½	549 (600-1½)
CIRCLING	900-1 541 (600-1)	940-1 581 (600-1)	940-1½ 581 (600-1½)	1100-2½ 741 (800-2½)

MIRL Rwy 16-34 ①  
REIL Rws 16 and 34 ①