

HOPE, ARKANSAS

AL-5530 (FAA)

24081

VORTAC TXK 116.3 Chan 110	APP CRS 052°	Rwy Idg TDZE 4111 346	Apt Elev 359
---	------------------------	---	------------------------

VOR RWY 4

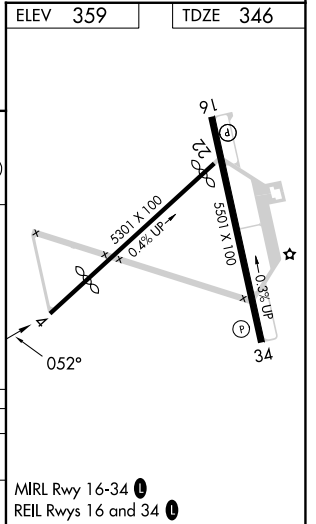
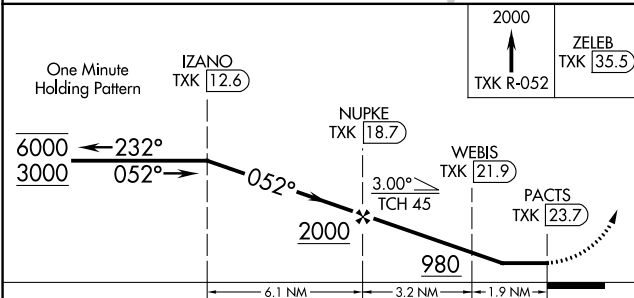
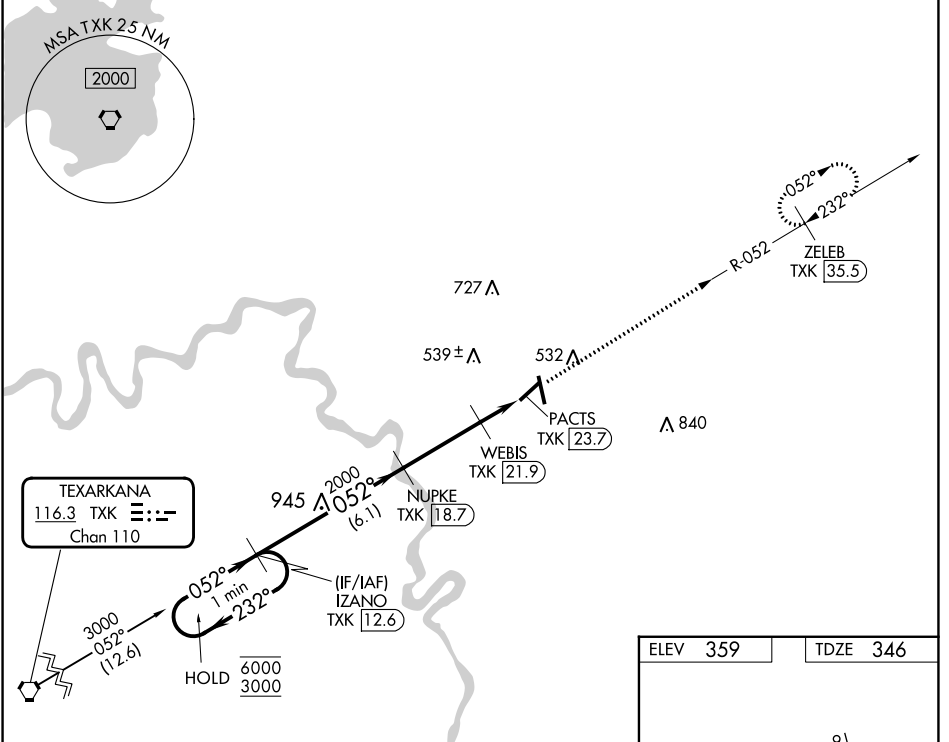
HOPE MUNI (M18)

DME required.

Procedure NA at night. Rwy 4 helicopter visibility reduction below 1 SM NA. Use Texarkana altimeter setting.

MISSED APPROACH: Climb to 2000 on TXK VORTAC R-052 to ZELEB/TXK 35.5 DME and hold.

TXK ASOS 120.2	FORT WORTH CENTER 123.925 269.475	UNICOM 122.8 (CTAF) 0
--------------------------	---	---------------------------------



CATEGORY	A	B	C	D
S-4	860-1	514 (600-1)	860-1 $\frac{3}{8}$	514 (600-1 $\frac{3}{8}$)
CIRCLING	860-1 501 (600-1)	940-1 581 (600-1)	940-1 $\frac{1}{2}$ 581 (600-1 $\frac{1}{2}$)	1100-2 $\frac{1}{2}$ 741 (800-2 $\frac{1}{2}$)

MIRL Rwy 16-34 0
REIL Rwy 16 and 34 0

HOPE, ARKANSAS
Orig-A 28JAN21

33°43'N-93°40'W

HOPE MUNI (M18)

VOR RWY 4

SC-1, 11 JUL 2024 to 08 AUG 2024

SC-1, 11 JUL 2024 to 08 AUG 2024