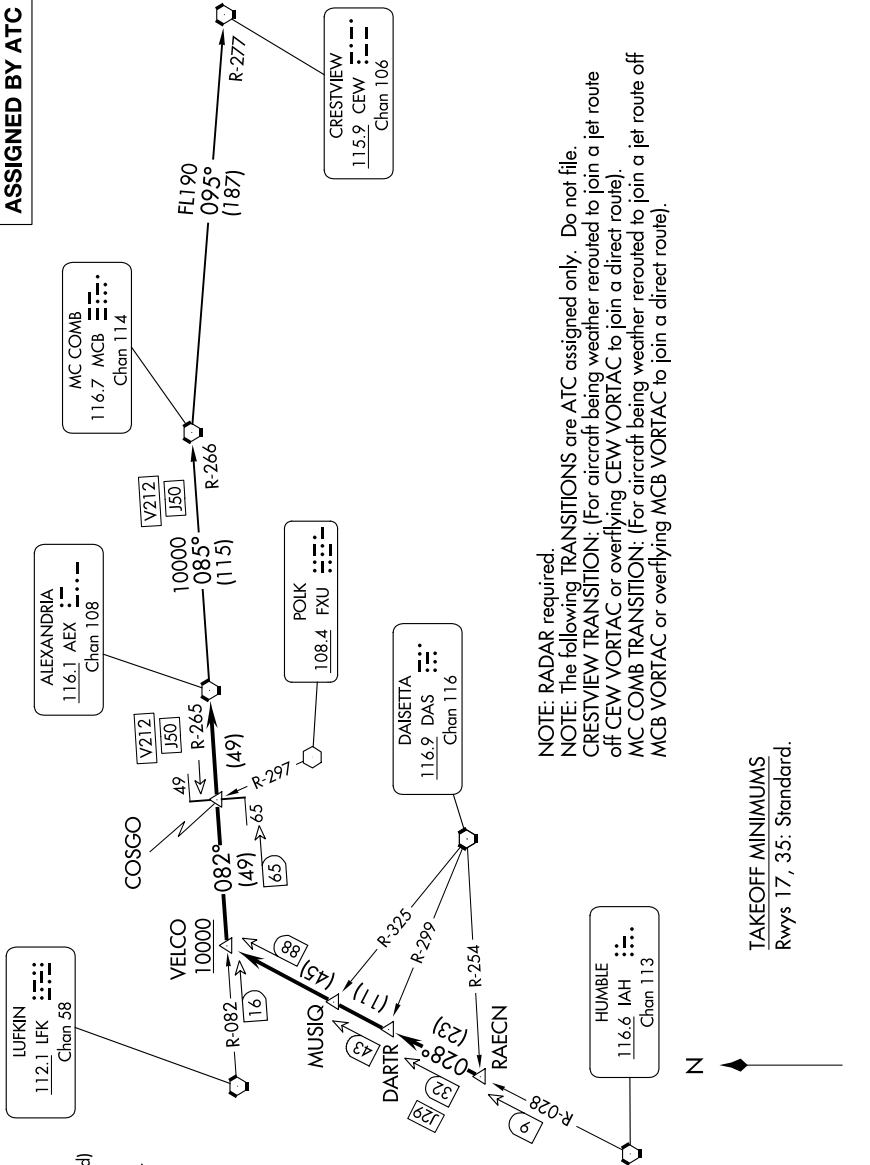


# ALEXANDRIA THREE DEPARTURE

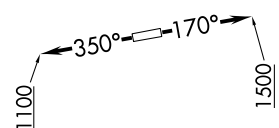
**TOP ALTITUDE:  
ASSIGNED BY ATC**

ATIS \*  
 118.125  
 CLNC DEL  
 121.4  
 CLNC DEL  
 CLNC DEL  
 119.25 (when nwr closed)  
 GND CON  
 121.4  
 SUGARLAND TOWER \*  
 118.65 (CTAF)  
 HOUSTON DEP CON  
 123.8 257.7



NOTE: RADAR required.  
 NOTE: The following TRANSITIONS are ATC assigned only. Do not file.  
 CRESTVIEW TRANSITION: (For aircraft being weather rerouted to join a jet route off CEW VORTAC or overflying CEW VORTAC to join a direct route).  
 MC COMB TRANSITION: (For aircraft being weather rerouted to join a jet route off MCB VORTAC or overflying MCB VORTAC to join a direct route).

TAKEOFF MINIMUMS  
 Rwy 17, 35: Standard.



NOTE: Chart not to scale.

(CONTINUED ON FOLLOWING PAGE)

SC-5, 11 JUL 2024 to 08 AUG 2024

SC-5, 11 JUL 2024 to 08 AUG 2024

# ALEXANDRIA THREE DEPARTURE