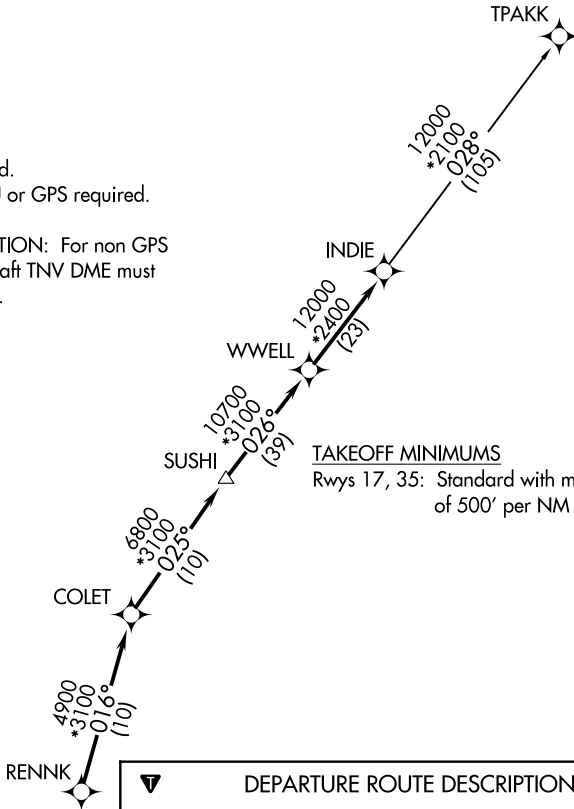


# INDIE EIGHT DEPARTURE (RNAV)

ATIS ★  
 118.125  
 CLNC DEL  
 121.4  
 CLNC DEL  
 119.25 (when twr closed)  
 GND CON  
 121.4  
 SUGARLAND TOWER ★  
 118.65 (CTAF)  
 HOUSTON DEP CON  
 123.8 257.7

**TOP ALTITUDE:  
 ASSIGNED BY ATC**

- NOTE: RADAR required.
- NOTE: DME/DME/IRU or GPS required.
- NOTE: RNAV 1.
- NOTE: TPAKK TRANSITION: For non GPS equipped aircraft TNV DME must be operational.



**TAKEOFF MINIMUMS**  
 Rws 17, 35: Standard with minimum climb of 500' per NM to 600.

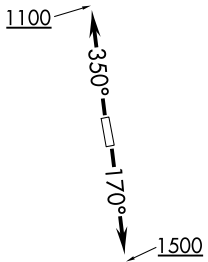
**DEPARTURE ROUTE DESCRIPTION**

TAKEOFF RUNWAY 17: Climb on heading 170° to 1500 for RADAR vectors to RENNK, then . . . .

TAKEOFF RUNWAY 35: Climb on heading 350° to 1100 for RADAR vectors to RENNK, then . . . .

. . . . on track 016° to COLET, then on track 025° to SUSHI, then on track 026° to WWELL, then on track 026° to INDIE, then on (transition). Maintain ATC assigned altitude. Expect filed altitude 10 minutes after departure.

TPAKK TRANSITION (INDIE8.TPAKK)



NOTE: Chart not to scale.

SC-5, 11 JUL 2024 to 08 AUG 2024

SC-5, 11 JUL 2024 to 08 AUG 2024