

WAAS CH 42806 W18A	APP CRS 177°	Rwy Idg TDZE Apt Elev	5500 1241 1245
--	------------------------	-----------------------------	---

RNAV (GPS) RWY 18

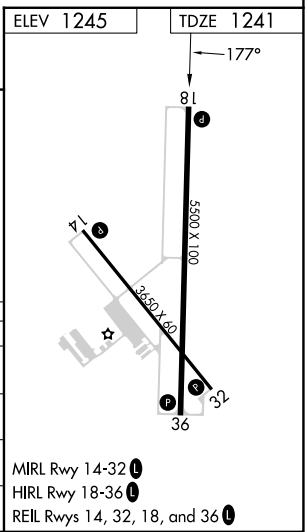
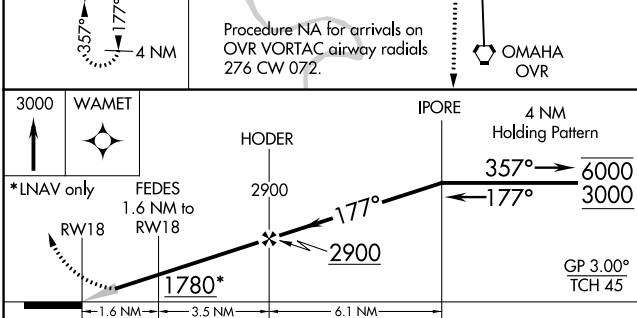
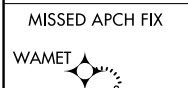
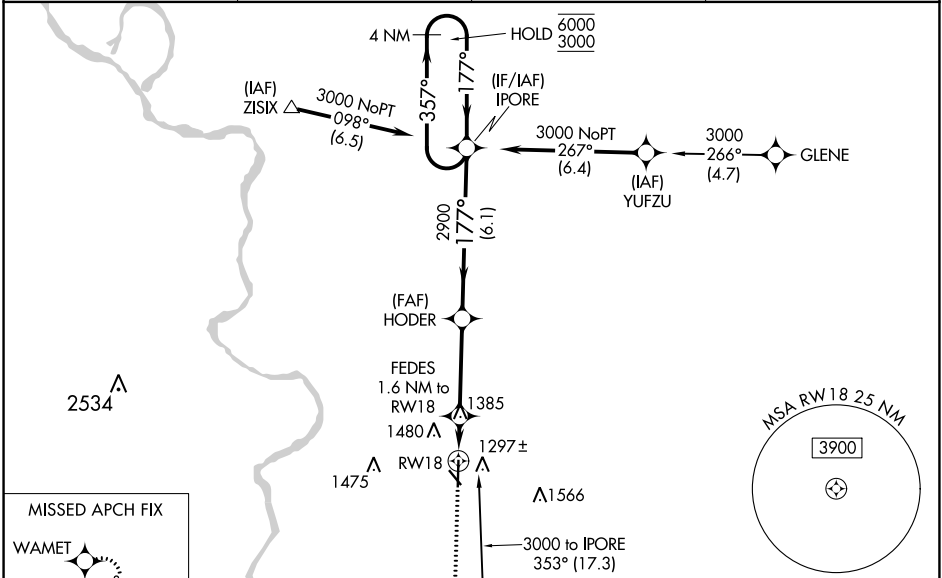
COUNCIL BLUFFS MUNI (CBF)

RNP APCH.

⚠ Baro-VNAV NA when using Eppley Airfield altimeter setting. For uncompensated Baro-VNAV systems, LNAV/VNAV NA below -17°C or above 54°C. When local altimeter setting not received, use Eppley Airfield altimeter setting and increase LPV DA to 1544 feet, LNAV/VNAV DA to 1750 feet and all MDA 60 feet and increase LPV all Cats visibility 1/8 SM, LNAV Cat C and D and Circling Cat C and D visibility 1/4 SM.

MISSED APPROACH: Climb to 3000 direct WAMET and hold.

AWOS-3 126.575	OMAHA APP CON 124.5 263.0	CLNC DEL 127.675	UNICOM 122.725 (CTAF) 📞
--------------------------	-------------------------------------	----------------------------	--



CATEGORY	A	B	C	D
LPV DA		1491-3/4	250 (300-3/4)	
LNAV/VNAV DA		1697-13/8	456 (500-13/8)	
LNAV MDA	1640-1	399 (400-1)	1640-1 1/8	399 (400-1 1/8)
C CIRCLING	1780-1 535 (600-1)	1840-1 595 (600-1)	1840-1 1/2 595 (600-1 1/2)	1880-2 635 (700-2)

NC-3, 11 JUL 2024 to 08 AUG 2024

NC-3, 11 JUL 2024 to 08 AUG 2024