

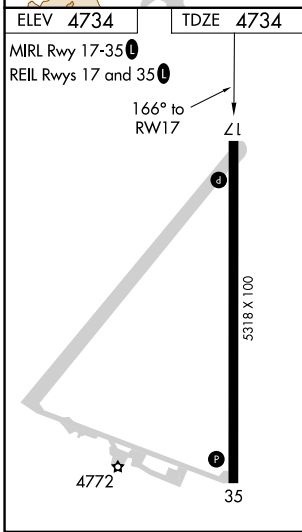
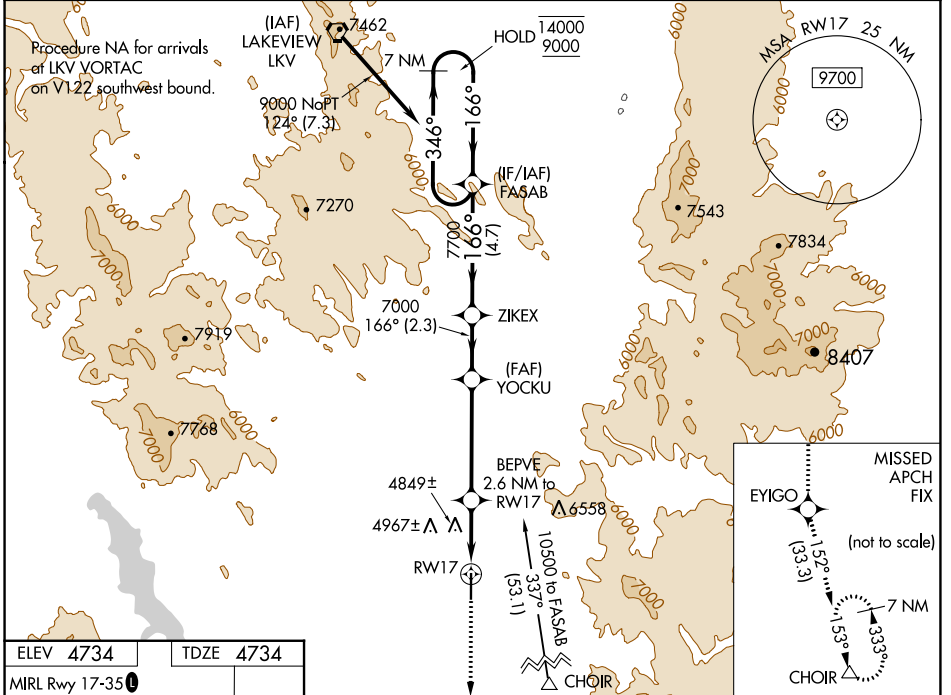
WAAS CH 93532 W17A	APP CRS 166°	Rwy Idg TDZE Apt Elev	5318 4734 4734
--	------------------------	-----------------------------	---

RNAV (GPS) RWY 17

LAKE COUNTY (LKV)

RNP APCH.	MISSED APPROACH: Climb to 11000 direct EYIGO and on track 152° to CHOIR and hold.
-----------	---

AWOS-3PT 135.525	SEATTLE CENTER 127.6 346.35	UNICOM 122.8 (CTAF) 0
----------------------------	---------------------------------------	---------------------------------



ELEV 4734	TDZE 4734				
MIRL Rwy 17-35	REIL Rwys 17 and 35				
11000 EYIGO	tr 152° CHOIR	FASAB	7 NM Holding Pattern		
*LNAV only.	BEPVE 2.6 NM to RWY 17	YOCKU	ZIKEX	346° → 14000 ← 166° 9000	
*1 NM to RWY 17	7000	7000	7700	GP 3.00° TCH 45	
1 NM	1.6 NM	4.3 NM	2.3 NM	4.7 NM	
CATEGORY	A	B	C	D	
LPV DA	4984-1		250 (300-1)		
LNAV/VNAV DA	5139-1½		405 (500-1½)		
LNAV MDA	5100-1		366 (400-1)		
CIRCLING	5160-1 426 (500-1)	5220-1 486 (500-1)	5460-2 726 (800-2)	5500-2½ 766 (800-2½)	

NW-1, 11 JUL 2024 to 08 AUG 2024

NW-1, 11 JUL 2024 to 08 AUG 2024