

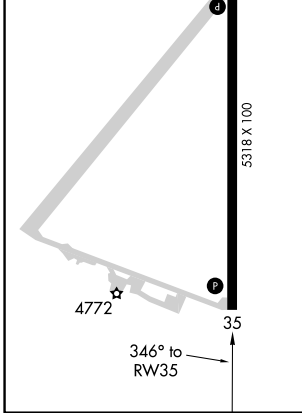
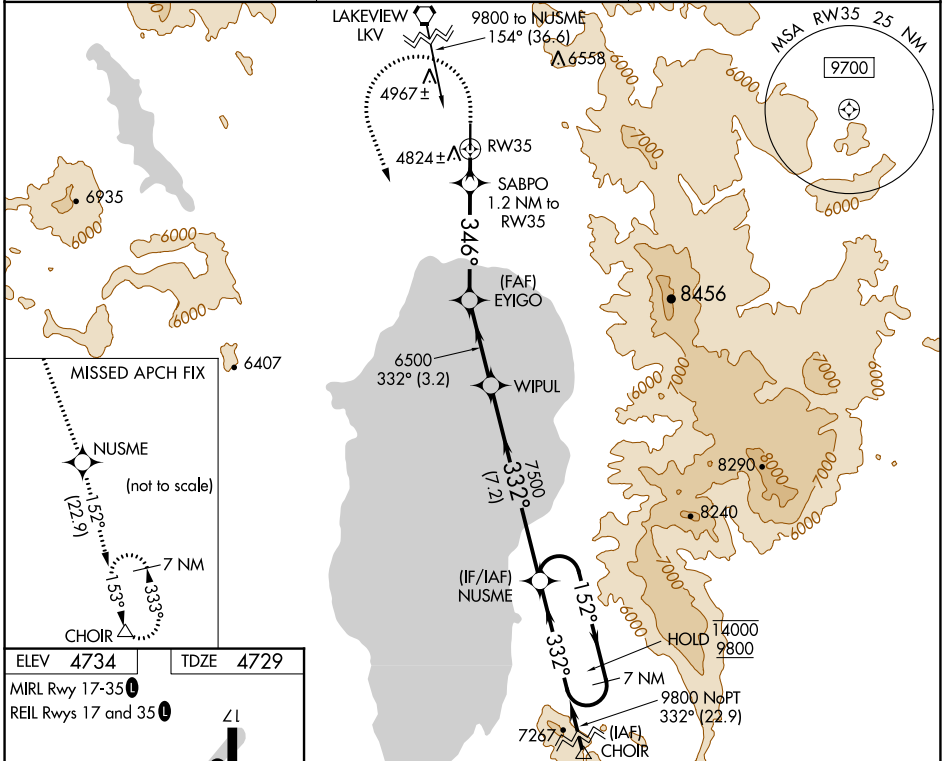
WAAS CH 99332 W35A	APP CRS 346°	Rwy Idg TDZE Apt Elev	5318 4729 4734
--	------------------------	-----------------------------	---

RNAV (GPS) RWY 35

LAKE COUNTY (LKV)

RNP APCH.	MISSED APPROACH: (Do not exceed 235K until NUSME) Climb to 5200 then climbing left turn to 11000 direct NUSME and on track 152° to CHOIR and hold.
	For uncompensated Baro-VNAV systems, LNAV/VNAV NA below -24°C or above 50°C. Circling NA east of Rwy 17-35.

AWOS-3PT 135.525	SEATTLE CENTER 127.6 346.35	UNICOM 122.8 (CTAF) 0
----------------------------	---------------------------------------	---------------------------------



5200	11000	NUSME	tr 152°	CHOIR	NUSME	7 NM Holding Pattern
*LNAV only		SABPO 1.2 NM to RW35	EYIGO 6500	WIPUL 7500	152° → 14000 9800	
RW35		346°	6500	332°	← 332°	
5160*		1.2 NM	4.2 NM	3.2 NM	7.2 NM	
CATEGORY	A		B	C	D	
LPV DA	4979-1 250 (300-1)					
LNAV/VNAV DA	5121-1½ 392 (400-1½)					
LNAV MDA	5080-1 351 (400-1)					
CIRCLING	5160-1	5220-1	5320-2	5480-2½		
	426 (500-1)	486 (500-1)	586 (600-2)	746 (800-2½)		

NW-1, 11 JUL 2024 to 08 AUG 2024

NW-1, 11 JUL 2024 to 08 AUG 2024