

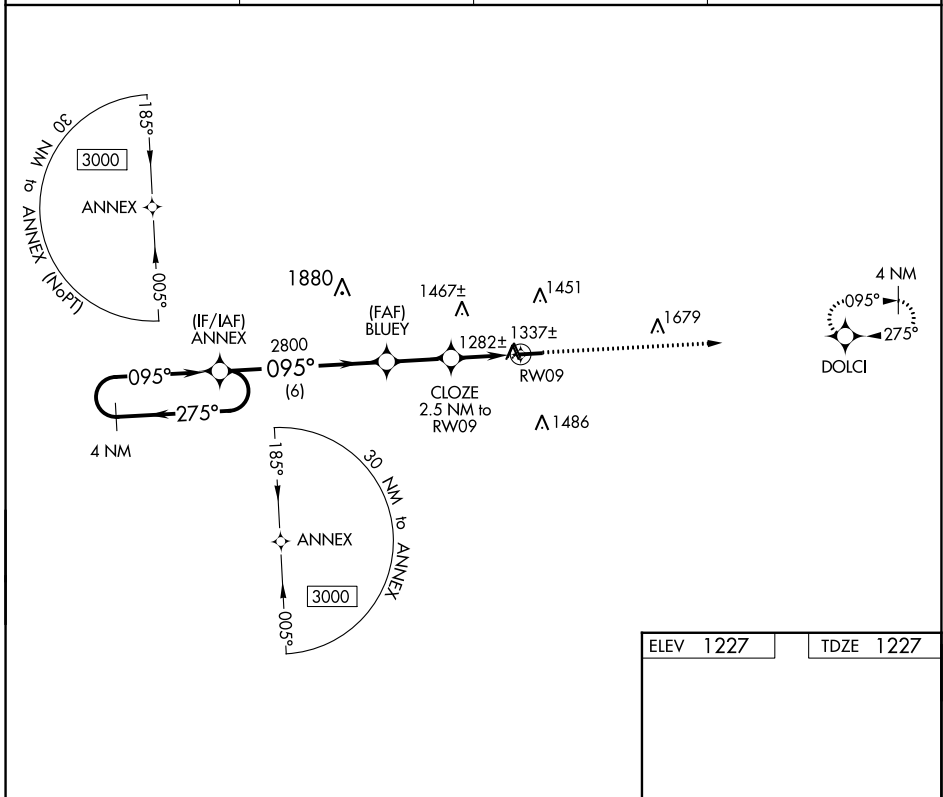
APP CRS	Rwy Idg	<b>4400</b>
<b>095°</b>	TDZE	<b>1227</b>
	Apt Elev	<b>1227</b>

# RNAV (GPS) RWY 9

HOLMES COUNTY (10G)

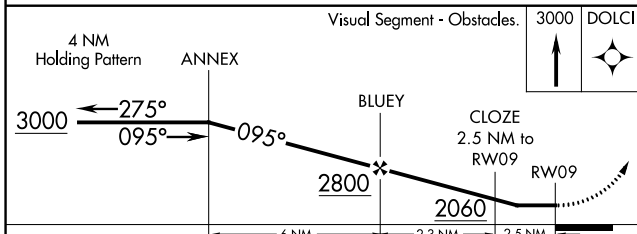
RNP APCH - GPS.	MISSED APPROACH: Climb to 3000 direct DOLCI and hold.
Rwy 9 helicopter visibility reduction below $\frac{3}{4}$ SM NA. When local altimeter setting not received, use Wayne County altimeter setting: increase all MDA 60 feet and visibility LNAV and Circling Cats C and D $\frac{1}{4}$ SM.	

AWOS-3 <b>128.325</b>	INDIANAPOLIS CENTER <b>124.45 323.275</b>	UNICOM <b>123.0</b> (CTAF)	<b>123.4</b>
--------------------------	--	-------------------------------	--------------



EC-2, 11 JUL 2024 to 08 AUG 2024

EC-2, 11 JUL 2024 to 08 AUG 2024



ELEV 1227	TDZE 1227
-----------	-----------

CATEGORY	A	B	C	D
LNAV MDA	1620-1	393 (400-1)	1620-1 $\frac{1}{8}$	393 (400-1 $\frac{1}{8}$ )
CIRCLING	1760-1	533 (600-1)	1840-1 $\frac{3}{4}$ 613 (700-1 $\frac{3}{4}$ )	1860-2 633 (700-2)