

WAAS CH 87030 W13A	APP CRS 135°	Rwy Idg TDZE Apt Elev	5000 1203 1204
--	------------------------	-----------------------------	---

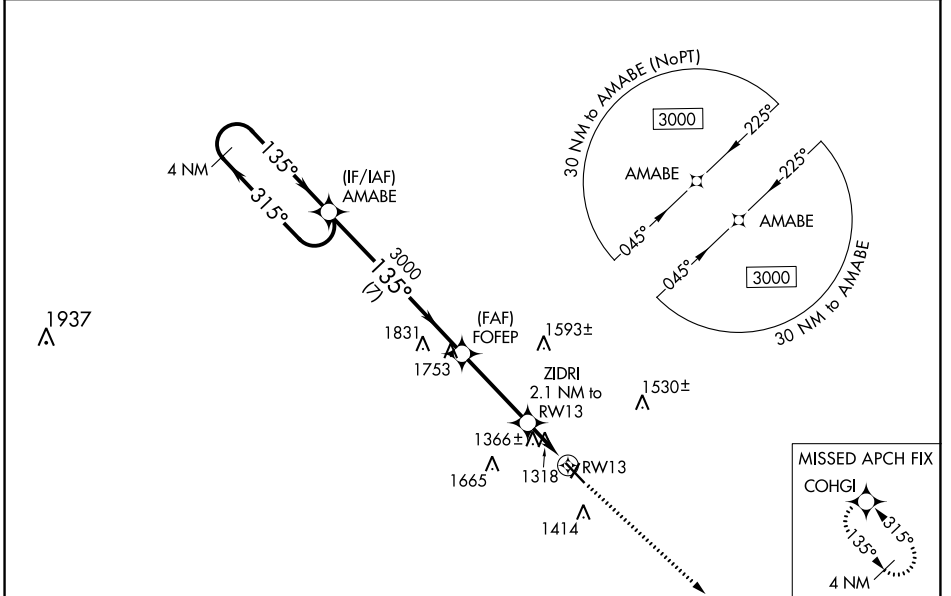
RNAV (GPS) RWY 13

ARTHUR N NEU (CIN)

⚠ For uncompensated Baro-VNAV systems, LNAV/VNAV NA below -17°C (2°F) or above 54°C (130°F). DME/DME RNP-0.3 NA. Baro-VNAV and VDP NA when using Audubon altimeter setting. When local altimeter setting not received, use Audubon altimeter setting; increase LPV DA to 1515 feet; increase LNAV/VNAV DA to 1669 feet and all visibilities ¼ SM; increase all MDAs 80 feet and visibility Cat C ¼ SM.

MISSED APPROACH: Climb to 3000 direct COHGI and hold.

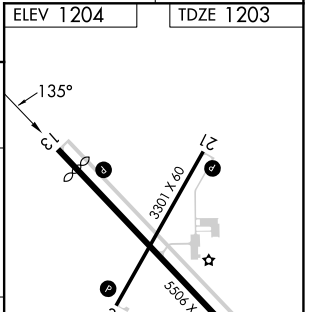
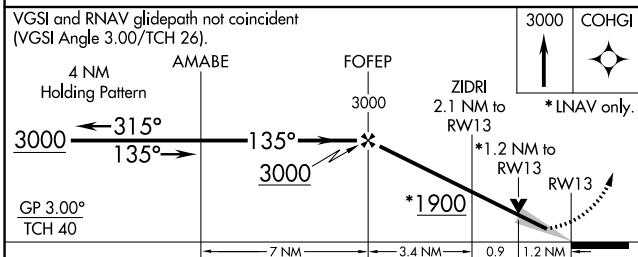
AWOS-3 118.025	MINNEAPOLIS CENTER 134.0 288.3	UNICOM 122.8 (CTAF) 0
--------------------------	--	---------------------------------



NC-3, 11 JUL 2024 to 08 AUG 2024

NC-3, 11 JUL 2024 to 08 AUG 2024

ELEV 1204	TDZE 1203
-----------	-----------



CATEGORY	A	B	C	D
LPV DA	1453-1	250 (300-1)		NA
LNAV/VNAV DA	1607-1 $\frac{3}{8}$	404 (500-1 $\frac{3}{8}$)		NA
LNAV MDA	1620-1	417 (500-1)	1620-1 $\frac{1}{8}$ 417 (500-1 $\frac{1}{8}$)	NA
CIRCLING	1740-1	536 (600-1)	1980-2 $\frac{1}{4}$ 776 (800-2 $\frac{1}{4}$)	NA

