

| | | |
|--|------------------------|---|
| WAAS CH 58307 W16A | APP CRS 161° | Rwy ldg 4002 TDZE 168 Apt Elev 168 |
|--|------------------------|---|

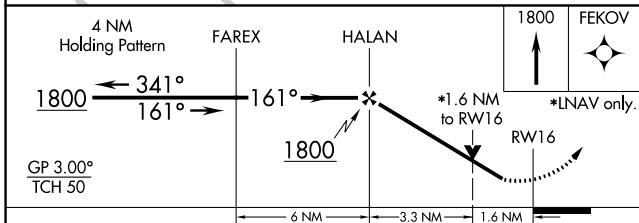
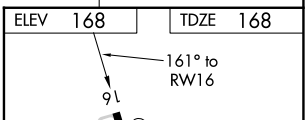
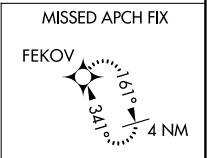
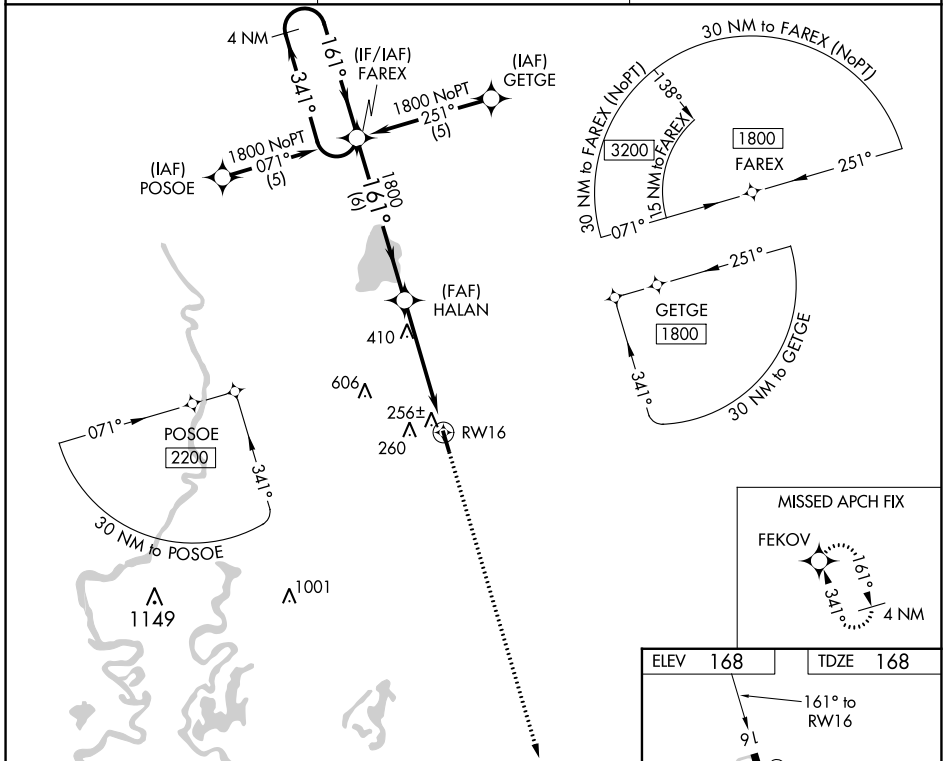
RNAV (GPS) RWY 16

MOREHOUSE MEML (BQP)

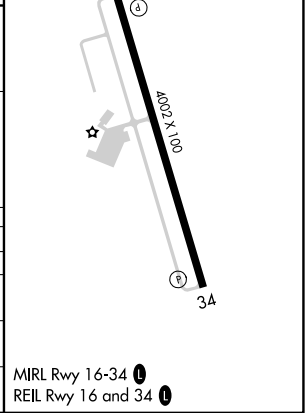
⚠ For uncompensated Baro-VNAV systems, LNAV/VNAV NA below -15°C (5°F) or above 34°C (130°F). DME/DME RNP-0.3 NA. Visibility reduction by helicopters NA. When local altimeter setting not received, use Monroe altimeter setting and increase LPV DA to 550, LNAV/VNAV DA to 577 and all MDA 60 feet; increase LNAV Cat C visibility 1/8 SM and Circling Cat C visibility 1/4 SM. Baro-VNAV NA when using Monroe altimeter setting. VDP NA when using Monroe altimeter setting.

MISSED APPROACH:
Climb to 1800 direct FEKOV and hold.

| | | |
|----------------------------|--|---------------------------------|
| AWOS-3PT 118.375 | MONROE APP CON ★ 126.9 307.9 | UNICOM 122.8 (CTAF) 0 |
|----------------------------|--|---------------------------------|



| CATEGORY | A | B | C | D |
|--------------|----------------------|----------------------|------------------------|----|
| LPV DA | 499-1¼ | 331 (400-1¼) | | NA |
| LNAV/VNAV DA | 526-1¼ | 358 (400-1¼) | | NA |
| LNAV MDA | 720-1 | 552 (600-1) | 720-1½ 552 (600-1½) | NA |
| CIRCLING | 720-1 552 (600-1) | 780-1 612 (700-1) | 820-1¾ 652 (700-1¾) | NA |



SC-4, 11 JUL 2024 to 08 AUG 2024

SC-4, 11 JUL 2024 to 08 AUG 2024