

# HI-TACAN RWY 14

VORTAC CRG <b>114.5</b> Chan <b>92</b>	APCH CRS <b>136°</b>	Rwy Idg TDZE <b>27</b> Arpt Elev <b>30</b>	<b>7701</b>
----------------------------------------------	-------------------------	--------------------------------------------------	-------------

[USAF]

JACKSONVILLE INTL (KJAX)

DME required. RADAR required for procedure entry.

MALSRL

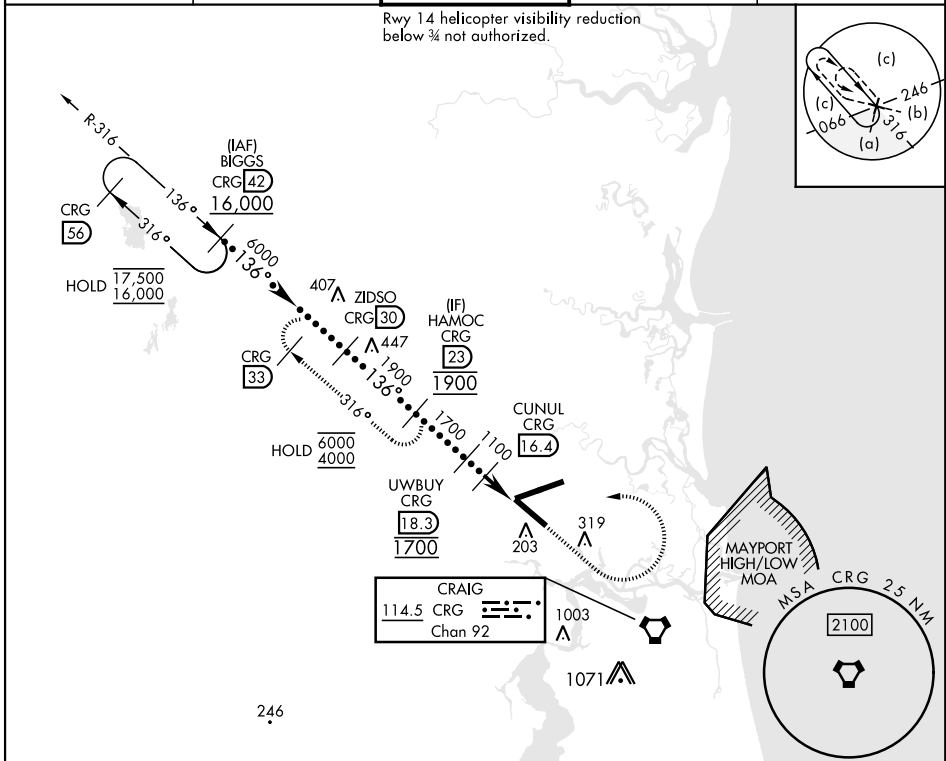
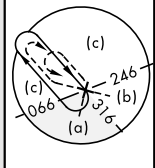
MISSED APPROACH: Climb to 2000 then climbing left turn to 4000 on CRG VORTAC R-316 to HAMOC 23 DME and hold.

\* When ALS inop, increase vis to 1 mile.

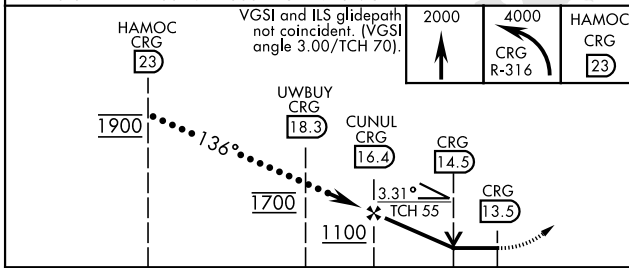


ATIS <b>125.85</b>	APP CON <b>119.0 269.9</b>	TOWER <b>118.3 317.7</b>	GND CON <b>121.9 348.6</b>	CLNC DEL <b>119.5 290.275</b>
-----------------------	-------------------------------	-----------------------------	-------------------------------	----------------------------------

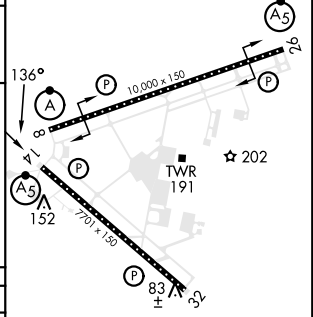
Rwy 14 helicopter visibility reduction below 3/4 not authorized.



EMERG SAFE ALT 100 NM 2800 FROM CRG VORTAC



ELEV 30	TDZE 27
---------	---------



CATEGORY	C	D	E
S-14*	400-3/4	373 (400-3/4)	
CIRCLING	580-1 1/2 550 (600-1 1/2)	640-2 610 (700-2)	760-2 1/2 730 (800-2 1/2)

HIRL Rwy 8-26, 14-32  
REIL Rwy 32  
TDZL/CL Rwy 8, 14, 26

# HI-TACAN RWY 14

SE-3, 11 JUL 2024 to 08 AUG 2024

SE-3, 11 JUL 2024 to 08 AUG 2024