

MOAB, UTAH

AL-5585 (FAA)

22363

VOR/DME OAB 109.8 Chan 35	APP CRS 118°	Rwy Idg TDZE Apt Elev 4579	N/A N/A 4579
---	------------------------	--------------------------------------	---

VOR-A

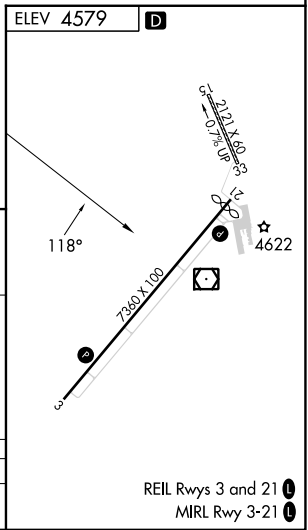
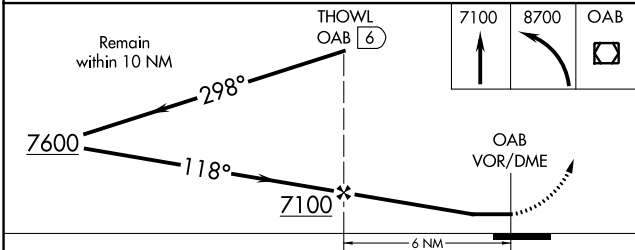
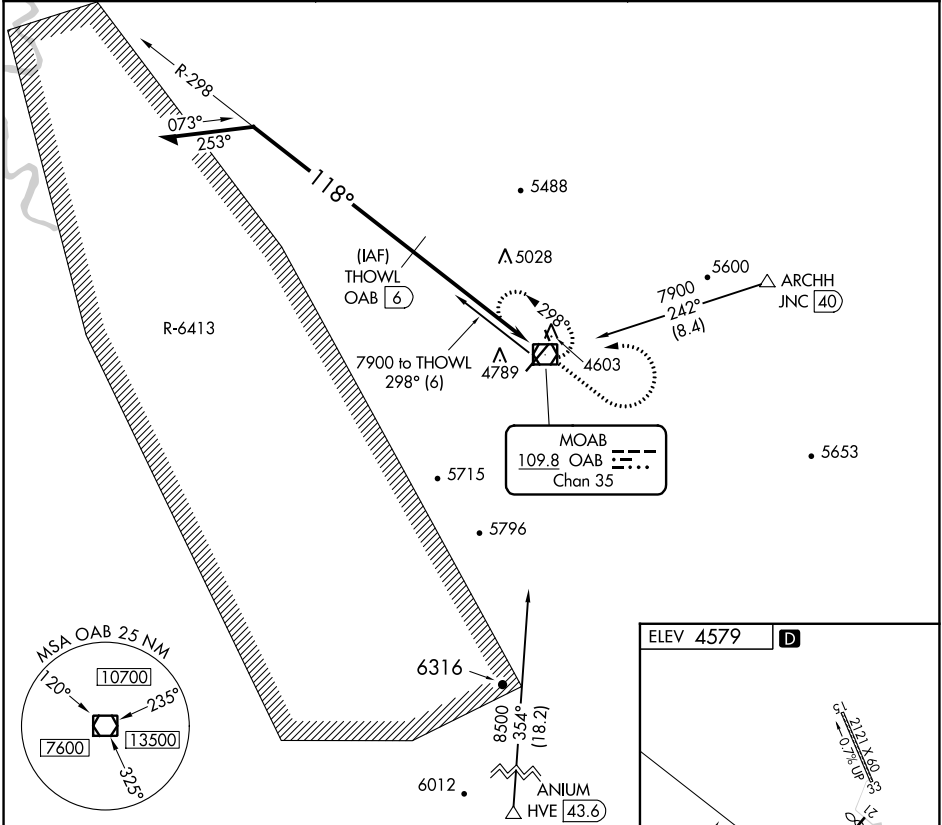
CANYONLANDS RGNL (CNY)

DME required.

▼ Circling NA to Rwys 15 and 33.
▲ Rwy 3 helicopter visibility reduction below 3/4 SM NA.
 Procedure NA when R-6413 in operation.

MISSED APPROACH: Climb to 7100 then climbing left turn to 8700 direct OAB VOR/DME and hold, continue climb-in-hold to 8700.

ASOS 118.525	DENVER CENTER 134.5 327.8	UNICOM 122.8 (CTAF) 0
------------------------	-------------------------------------	---------------------------------



CATEGORY	A	B	C	D
C CIRCLING	5120-1 541 (600-1)	5200-1 621 (700-1)	5640-3 1061 (1100-3)	6220-3 1641 (1700-3)

MOAB, UTAH
Amdt 12 27JAN22

38°45'N-109°45'W

VOR-A

CANYONLANDS RGNL (CNY)

REIL Rwys 3 and 21 0
MIRL Rwy 3-21 0

SW-4, 11 JUL 2024 to 08 AUG 2024

SW-4, 11 JUL 2024 to 08 AUG 2024