

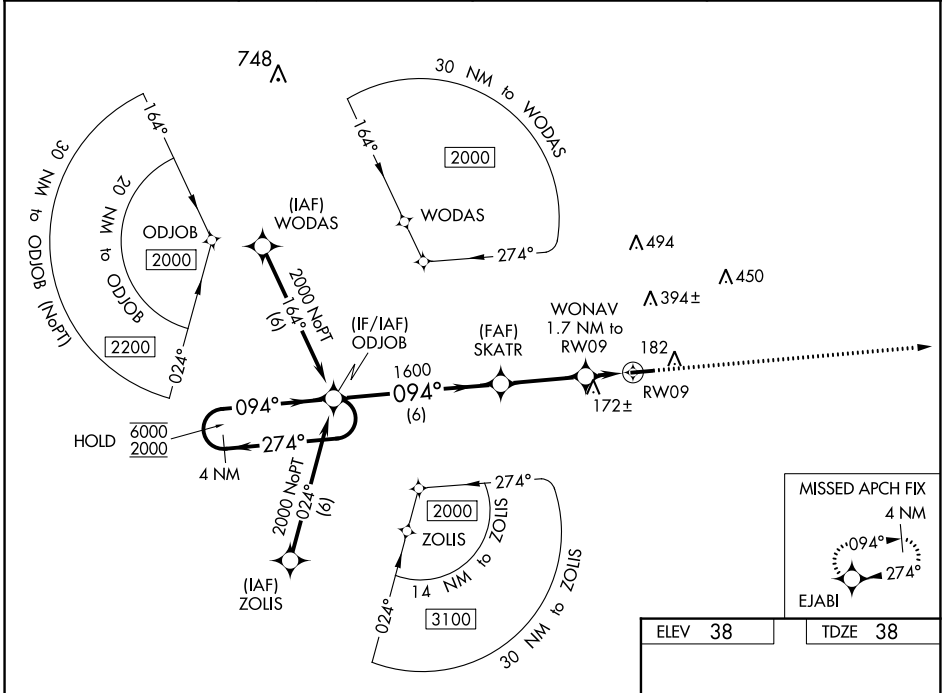
WAAS CH <b>93536</b> <b>W09A</b>	APP CRS <b>094°</b>	Rwy Idg TDZE Apt Elev	<b>4004</b> <b>38</b> <b>38</b>
--	------------------------	-----------------------------	---------------------------------------

# RNAV (GPS) RWY 9

WALLACE-PENDER (ACZ)

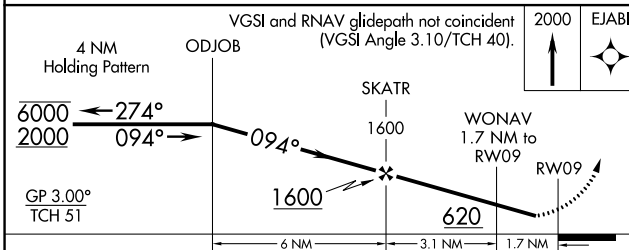
RNP APCH - GPS.	MISSED APPROACH: Climb to 2000 direct EJABI and hold.
<p>▼ Rwy 9 helicopter visibility reduction below 1 SM NA. Baro-VNAV NA.</p> <p>▲ NA When local altimeter not received, use Kenansville altimeter setting. Straight-in and Circling Rwy 9 NA at night.</p>	

AWOS-3P <b>121.07</b>	WILMINGTON APP CON ★ <b>135.75 317.425</b>	UNICOM <b>122.8 (CTAF) 0</b>
--------------------------	---	---------------------------------

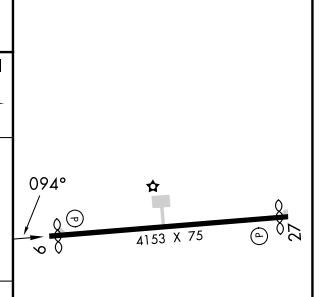


SE-2, 11 JUL 2024 to 08 AUG 2024

SE-2, 11 JUL 2024 to 08 AUG 2024



ELEV 38	TDZE 38
---------	---------



CATEGORY	A	B	C	D
LPV DA		401-1	363 (400-1)	
LNAV/VNAV DA		538-1 $\frac{5}{8}$	500 (500-1 $\frac{5}{8}$ )	
LNAV MDA	500-1	462 (500-1)	500-1 $\frac{3}{8}$	462 (500-1 $\frac{3}{8}$ )
CIRCLING	620-1	582 (600-1)	820-2 $\frac{1}{4}$ 782 (800-2 $\frac{1}{4}$ )	820-2 $\frac{1}{2}$ 782 (800-2 $\frac{1}{2}$ )

