

WAAS CH <b>65936</b> <b>W18A</b>	APP CRS <b>183°</b>	Rwy Idg TDZE Apt Elev	<b>4359</b> <b>539</b> <b>539</b>
--	------------------------	-----------------------------	---

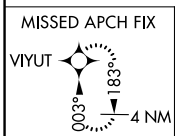
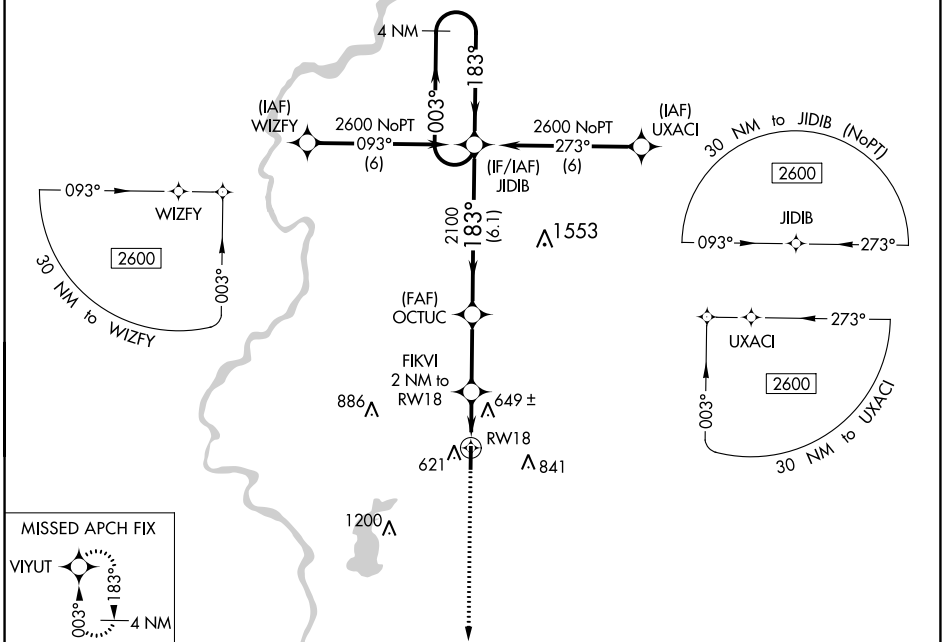
# RNAV (GPS) RWY 18

SULLIVAN COUNTY (SIV)

**Baro-VNAV NA. DME/DME RNP-0.3 NA. When Robinson altimeter setting is not received, use Terre Haute Intl-Hulman Field altimeter setting and increase all DA/MDA 20 feet.**

**MISSED APPROACH:**  
Climb to 2500 direct VIYUT and hold.

RSV AWOS-3 <b>120.5</b>	HULMAN APP CON <b>135.35 339.8</b>	UNICOM <b>122.8 (CTAF) 0</b>
----------------------------	---------------------------------------	---------------------------------



ELEV 539	TDZE 539
81	
183°	
4359 X 75	
36	

REIL Rwy 18 and 36 **0**  
MIRL Rwy 18-36 **0**

2500	VIYUT	VGS1 and descent angles not coincident (VGS1 Angle 3.00/TCH 21).		4 NM
		OCTUC		JIDIB Holding Pattern
*LNAV only		FIKVI 2 NM to RWY 18	2100	2600
RWY 18		1200*	2100	GP 3.00° TCH 40
2 NM		2.8 NM	6.1 NM	
CATEGORY	A	B	C	D
LPV DA	826-1	287 (300-1)		NA
LNAV/VNAV DA	826-1	287 (300-1)		NA
LNAV MDA	940-1	401 (500-1)		NA
CIRCLING	1000-1	1080-1		NA
	461 (500-1)	541 (600-1)		

EC-2, 11 JUL 2024 to 08 AUG 2024

EC-2, 11 JUL 2024 to 08 AUG 2024