

WAAS CH 82136 W36A	APP CRS 003°	Rwy Idg 4359 TDZE 539 Apt Elev 539
--	------------------------	---

RNAV (GPS) RWY 36

SULLIVAN COUNTY (SIV)

RNP APCH.

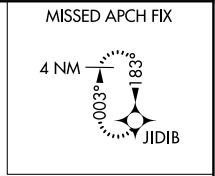
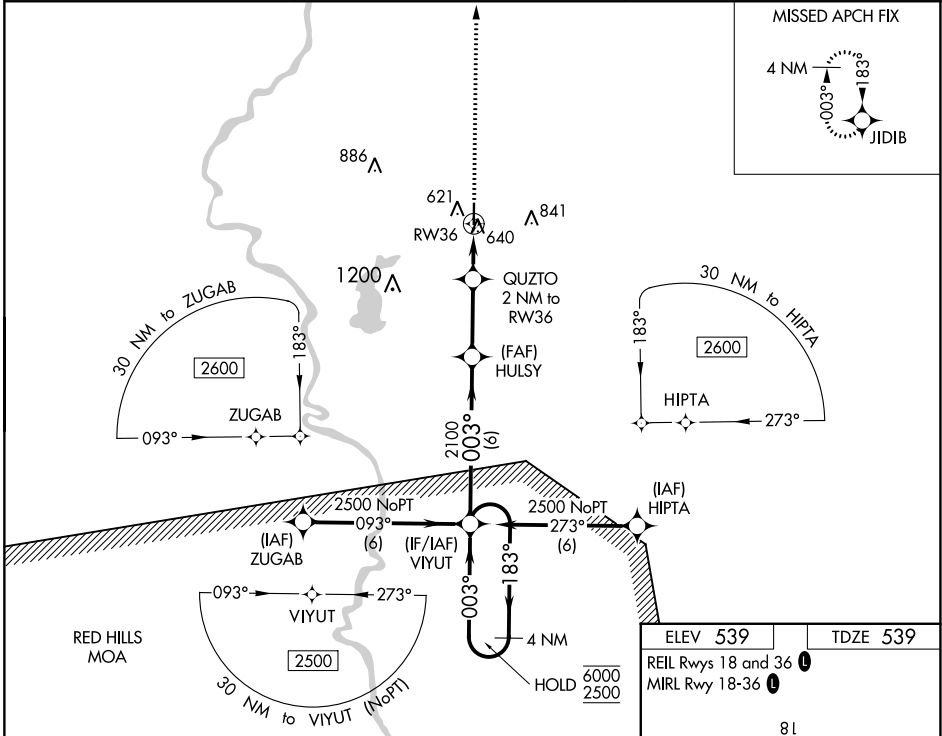
▽ Baro-VNAV NA. Use Robinson altimeter setting; when not received, use Terre Haute altimeter setting and increase LPV DA to 876, increase LNAV/VNAV DA to 889, and increase all MDA 20 feet.
▲ NA

MISSED APPROACH:
Climb to 2600 direct
JIDIB and hold.

RSV AWOS-3
120.5

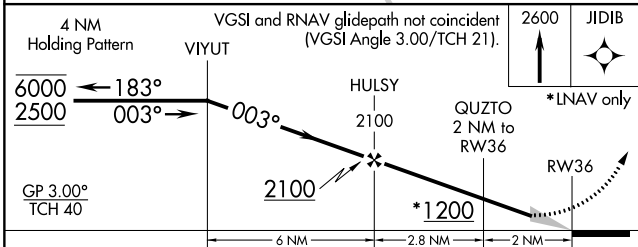
HULMAN APP CON
135.35 339.8

UNICOM
122.8 (CTAF) **0**

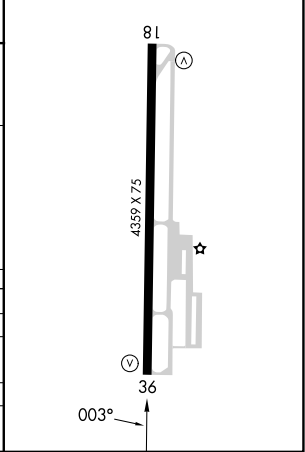


EC-2, 11 JUL 2024 to 08 AUG 2024

EC-2, 11 JUL 2024 to 08 AUG 2024



ELEV 539	TDZE 539
REIL Rwy 18 and 36 0	
MIRL Rwy 18-36 0	



CATEGORY	A	B	C	D
LPV DA	856-1 1/8	317 (400-1 1/8)		NA
LNAV/VNAV DA	869-1	330 (400-1)		NA
LNAV MDA	980-1	441 (500-1)		NA
CIRCLING	1000-1 461 (500-1)	1080-1 541 (600-1)		NA