

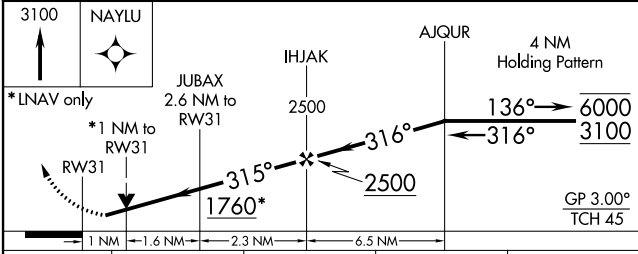
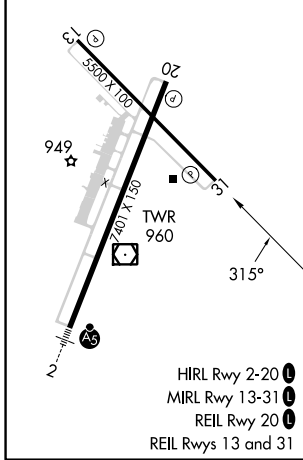
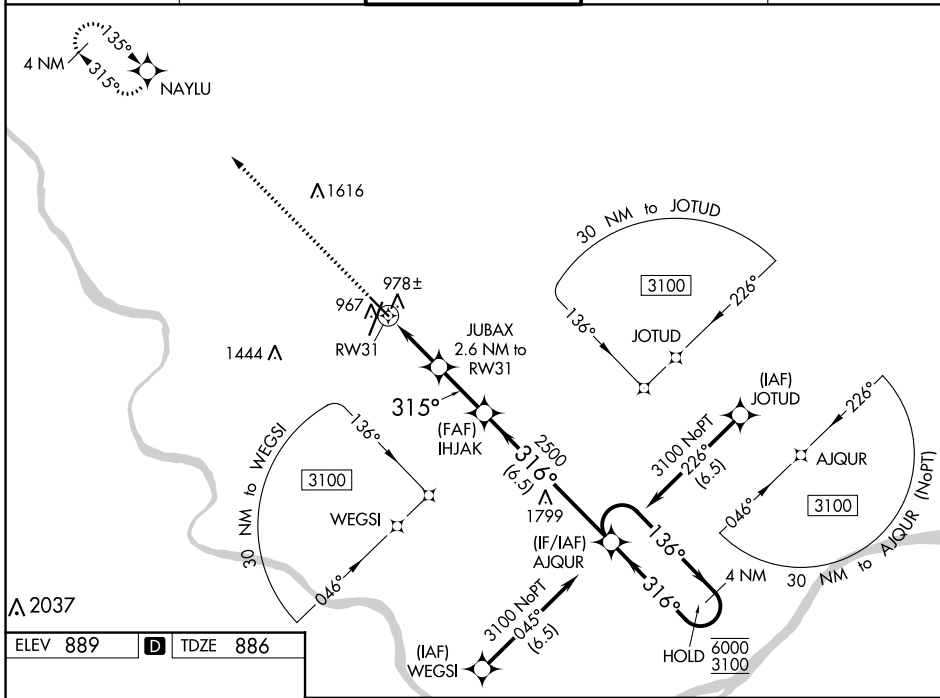
WAAS CH <b>86242</b> <b>W31A</b>	APP CRS <b>315°</b>	Rwy Idg TDZE Apt Elev	<b>5500</b> <b>886</b> <b>889</b>
--	------------------------	-----------------------------	---

# RNAV (GPS) RWY 31

COLUMBIA RGNL (COU)

RNP APCH.	MISSED APPROACH: Climb to 3100 direct NAYLU and hold.
<p><b>▼</b> Circling Rwy 20 NA at night. Rwy 31 helicopter visibility reduction below 3/4 SM NA. For uncompensated Baro-VNAV systems, LNAV/VNAV NA below -17°C or above 54°C. Circling NA for Cat D west of Rwy 2 and 13.</p>	

ATIS <b>128.45</b>	MIZZO APP CON <b>124.375 353.925</b>	COLUMBIA TOWER * <b>119.3 (CTAF) 363.25</b>	GND CON <b>121.6</b>	UNICOM <b>122.95</b>
-----------------------	---	--	-------------------------	-------------------------



CATEGORY	A	B	C	D
LPV DA		1138-1	252 (300-1)	
LNAV/VNAV DA		1138-1	252 (300-1)	
LNAV MDA		1240-1	354 (400-1)	
<b>C</b> CIRCLING	1300-1 411 (500-1)	1340-1 451 (500-1)	1360-1½ 471 (500-1½)	1440-2 551 (600-2)

NC-3, 11 JUL 2024 to 08 AUG 2024

NC-3, 11 JUL 2024 to 08 AUG 2024