

APP CRS 214°	Rwy Idg 5000
	TDZE 48
	Apt Elev 48

RNAV (GPS) RWY 21

ACCOMACK COUNTY (MFLV)

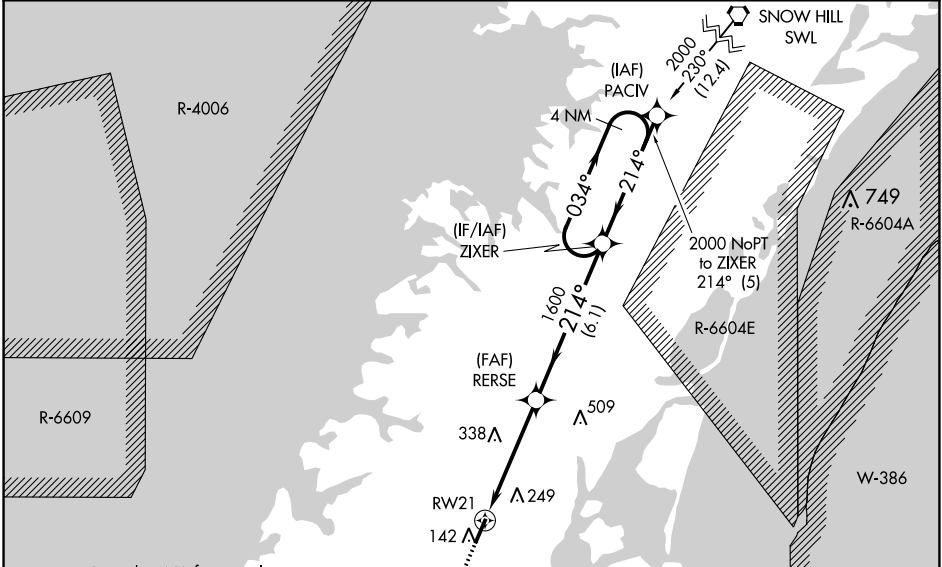
RNP APCH.
 Rwy 21 helicopter visibility reduction below 3/4 SM NA.

MISSED APPROACH: Climb to 2000 direct UCGEL and hold.

AWOS-3
118.175

PATUXENT APP CON*
127.95 314.0

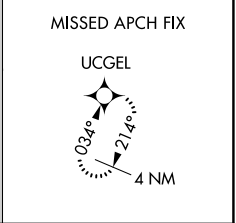
UNICOM
122.8 (CTAF)



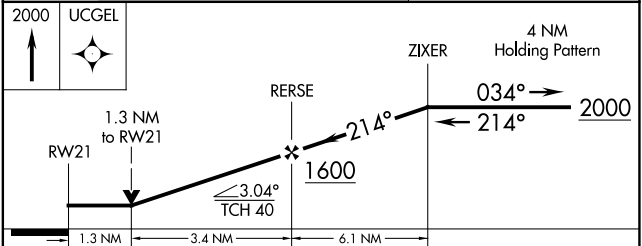
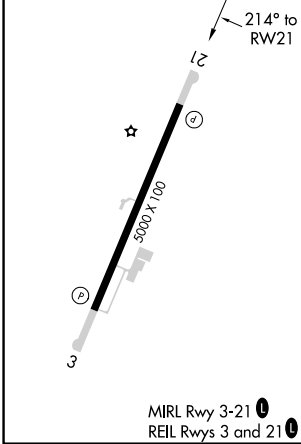
Procedure NA for arrival on CCV VORTAC airway radials 323 CW 041.

CAPE CHARLES CCV

MSA RW 21 25 NM
1800



ELEV 48	TDZE 48
----------------	----------------



CATEGORY	A	B	C	D
LNVA MDA	500-1	452 (500-1)	500-1 3/8	452 (500-1 3/8)
CIRCLING	500-1	560-1	700-1 3/4	700-2
	452 (500-1)	512 (600-1)	652 (700-1 3/4)	652 (700-2)

NE-3, 11 JUL 2024 to 08 AUG 2024

NE-3, 11 JUL 2024 to 08 AUG 2024