


LOC I-HWV <b>108.95</b>	APP CRS <b>059°</b>	Rwy ldg TDZE Apt Elev	<b>4201</b> <b>76</b> <b>81</b>
----------------------------	------------------------	-----------------------------	---------------------------------------

# ILS or LOC RWY 6

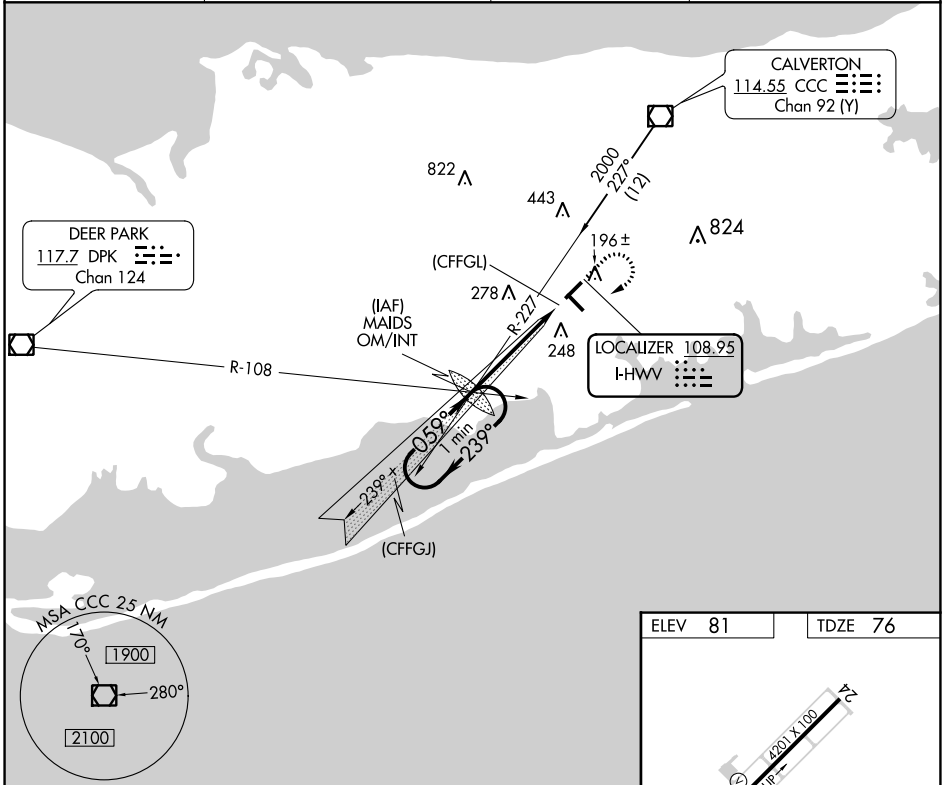
BROOKHAVEN (HWV)

**NA** Helicopter visibility reduction below  $\frac{3}{4}$  SM NA. When local altimeter setting not received, use Long Island Mac Arthur altimeter setting and increase all DA 28 feet and all MDA 40 feet. For inoperative MALSR, increase S-ILS 6 all Cats visibility to  $\frac{7}{8}$ , and S-LOC 6 all Cats visibility to 1 mile. ILS localizer unusable 0.4 NM to threshold.

**MALSR** 

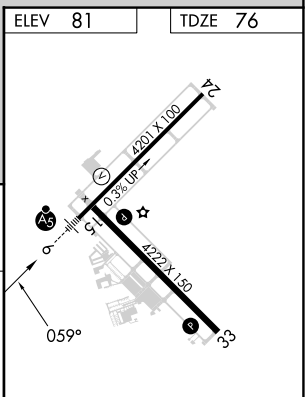
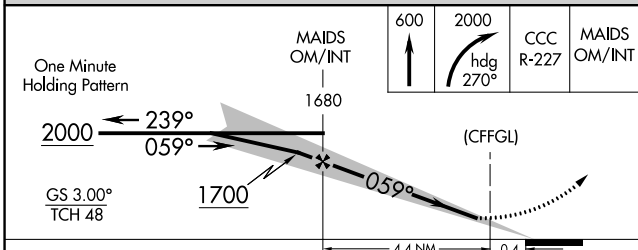
**MISSED APPROACH:** Climb to 600 then climbing right turn to 2000 on heading 270° and CCC VOR/DME R-227 to MAIDS OM/INT and hold, continue climb-in-hold to 2000.

ASOS <b>119.625</b>	NEW YORK APP CON <b>120.05 343.75</b>	CLNC DEL <b>133.2</b>	UNICOM <b>122.8 (CTAF)</b> <b>U</b>
------------------------	--	--------------------------	--



NE-2, 11 JUL 2024 to 08 AUG 2024

NE-2, 11 JUL 2024 to 08 AUG 2024



CATEGORY	A	B	C	D	FAF to MAP 4.4 NM					
S-ILS 6	337- $\frac{3}{4}$	261 (300- $\frac{3}{4}$ )	NA	NA	Knots	60	90	120	150	180
S-LOC 6	520- $\frac{3}{4}$	444 (500- $\frac{3}{4}$ )	NA	NA	Min:Sec	4:24	2:56	2:12	1:46	1:28
<b>C</b> CIRCLING	560-1	479 (500-1)	NA	NA						