


WAAS CH 57925 W06A	APP CRS 059°	Rwy Idg TDZE 4201 76 Apt Elev 81
--	------------------------	--

RNAV (GPS) RWY 6

BROOKHAVEN (HWV)

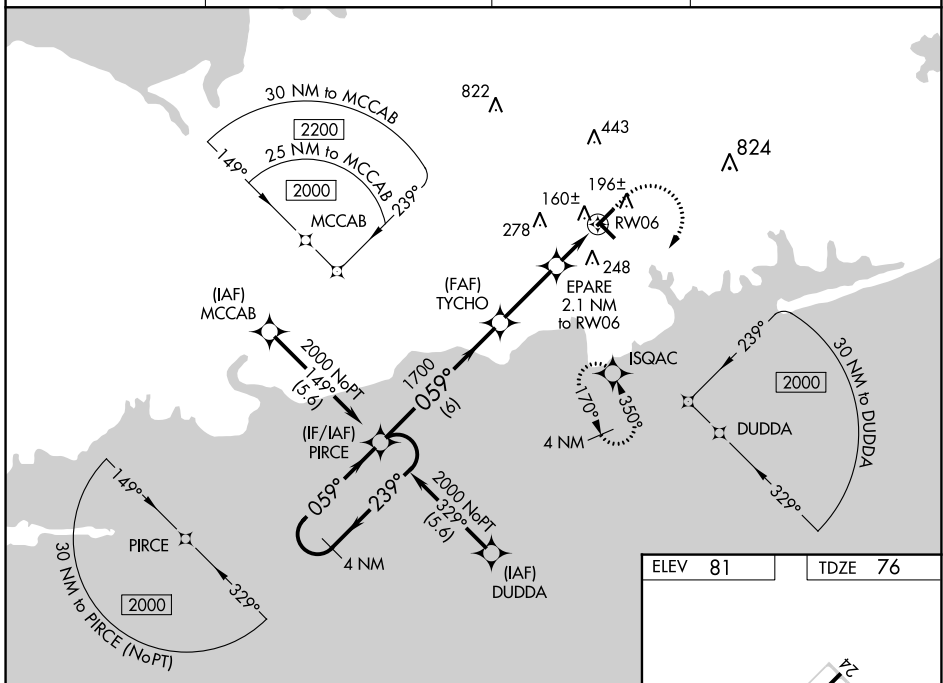
⚠ DME/DME RNP-0.3 NA. Helicopter visibility reduction below ¾ SM NA. When local altimeter setting not received, use Isip altimeter setting and increase all DA 28 feet and all MDA 40 feet. Inoperative table does not apply to LNAV/VNAV. For inoperative MALSR, increase LPV all Cats visibility to ¾ mile, increase LNAV all Cats visibility to 1 mile. For inoperative MALSR when using Isip altimeter setting, increase LPV and LNAV/VNAV all Cats visibility to ¾ mile, increase LNAV all Cats visibility to 1 mile. Baro-VNAV and VDP NA with Isip altimeter setting. For uncompensated Baro-VNAV systems, LNAV/VNAV NA below -15°C (5°F) or above 54°C (130°F).

MALSR



MISSED APPROACH:
Climb to 600 then climbing right turn to 2000 direct ISQAC and hold.

ASOS 119.625	NEW YORK APP CON 120.05 343.75	CLNC DEL 133.2	UNICOM 122.8 (CTAF) 0
------------------------	--	--------------------------	---------------------------------



NE-2, 11 JUL 2024 to 08 AUG 2024

NE-2, 11 JUL 2024 to 08 AUG 2024

4 NM Holding Pattern

VGSI and RNAV glidepath not coincident (VGSI Angle 3.00/TCH 47).

GP 3.00° TCH 51

2000 ← 239° → 059° → 1700

6 NM → 2.9 NM → 1.1 NM → 1 NM

600 2000 ISQAC

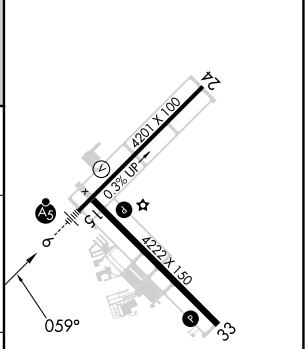
EPARE 2.1 NM to RW06

*1 NM to RW06

*780

*LNAV only.

ELEV 81	TDZE 76
---------	---------



CATEGORY	A	B	C	D
LPV DA	339-¾	263 (300-¾)		NA
LNAV/VNAV DA	326-¾	250 (300-¾)		NA
LNAV MDA	420-¾	344 (400-¾)		NA
C CIRCLING	560-1	479 (500-1)		NA

REIL Rwy 15, 24 and 33 **0**
MIRL Rwy 6-24 and 15-33 **0**