


VOR/DME CCC 114.55 Chan 92 (Y)	APP CRS 042°	Rwy Idg TDZE 77 Apt Elev 81
--	------------------------	--

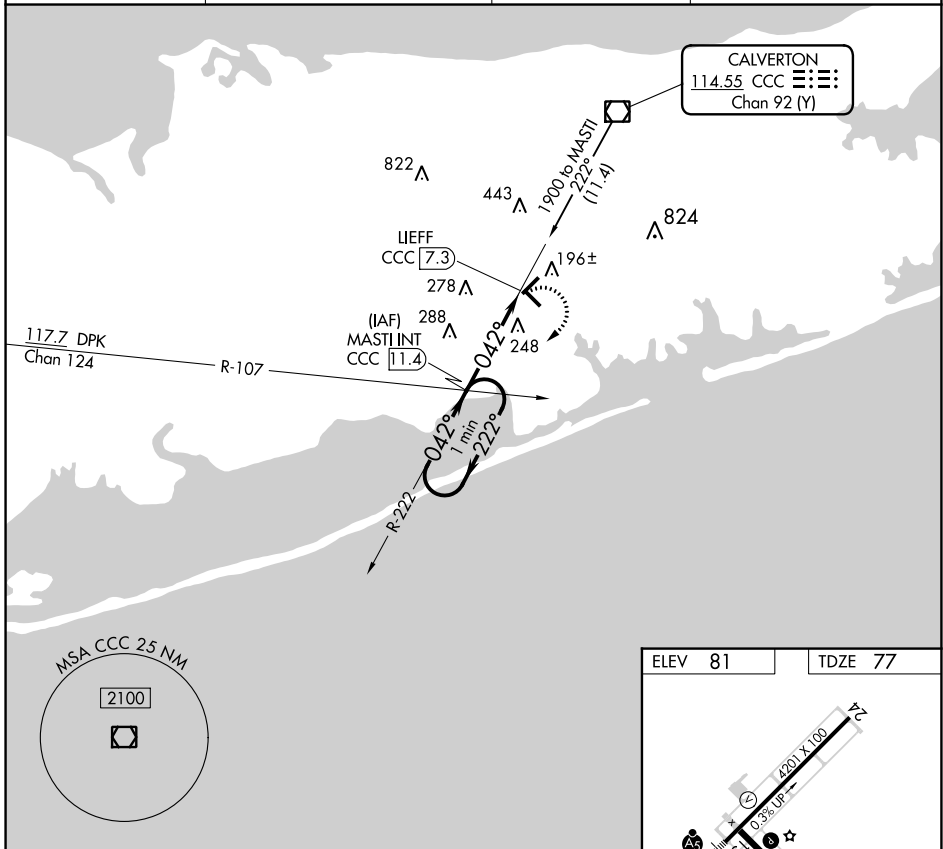
VOR RWY 6
BROOKHAVEN (HWV)

⚠ Inoperative table does not apply.
⚠ When local altimeter setting not received, use Islip altimeter setting and increase all MDAs 40 feet.

MALSR 

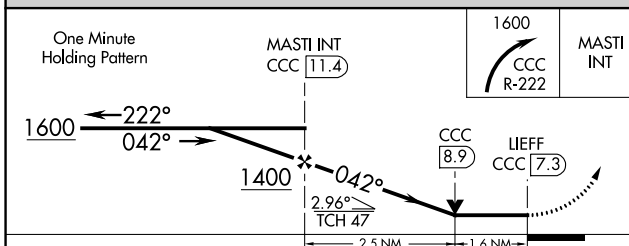
MISSED APPROACH: Climbing right turn to 1600 via CCC VOR/DME R-222 to MASTI INT/11.4 DME and hold.

ASOS 119.625	NEW YORK APP CON 120.05 343.75	CLNC DEL 133.2	UNICOM 122.8 (CTAF) 📻
------------------------	--	--------------------------	--



NE-2, 11 JUL 2024 to 08 AUG 2024

NE-2, 11 JUL 2024 to 08 AUG 2024



ELEV 81	TDZE 77
---------	---------

REIL Rwy 15, 24 and 33 **📻**
MIRL Rwy 6-24 and 15-33 **📻**

FAF to MAP 4.1 NM					
Knots	60	90	120	150	180
Min:Sec	4:06	2:44	2:03	1:38	1:22

CATEGORY	A	B	C	D
S-6	620-1	543 (600-1)		NA
📻 CIRCLING	620-1	539 (600-1)		NA