

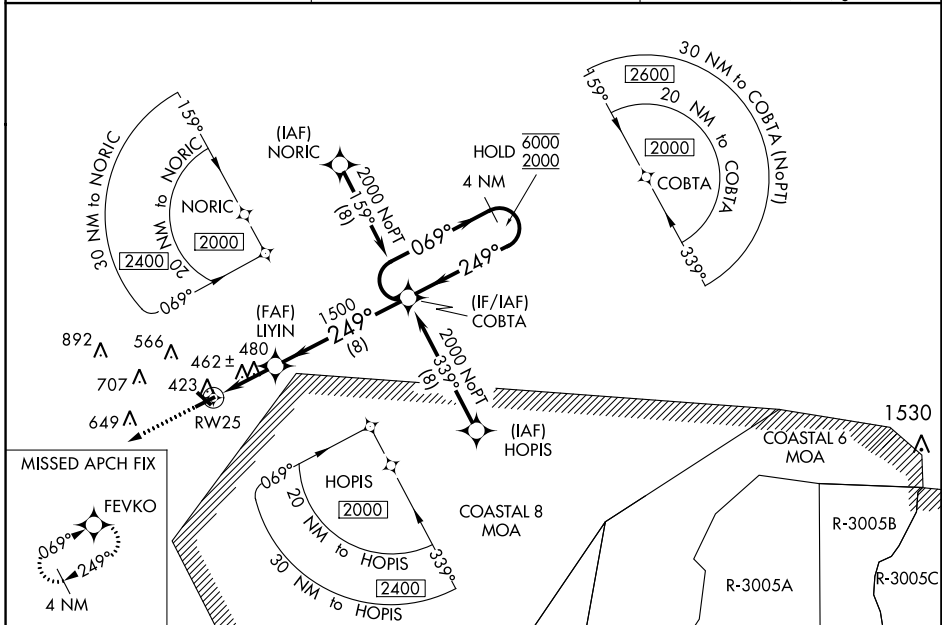
# RNAV (GPS) RWY 25

VIDALIA RGNL (VDI)

WAAS CH <b>69609</b> <b>W25A</b>	APP CRS <b>249°</b>	Rwy Idg TDZE Apt Elev	<b>6002</b> <b>273</b> <b>274</b>
--	------------------------	-----------------------------	---

RNP APCH - GPS.	MALSR 	MISSED APPROACH: Climb to 2000 direct FEVKO and hold.
<p> Circling Rwy 32 NA at night. For uncompensated Baro-VNAV systems, LNAV/VNAV NA below -15°C or above 54°C. For inop ALS, increase LNAV/VNAV all Cats visibility to 3/8 SM and LNAV Cat C/D to 1 3/8 SM.</p>		

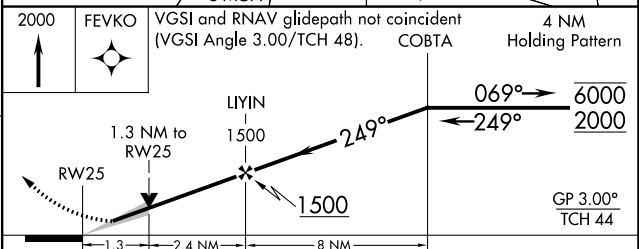
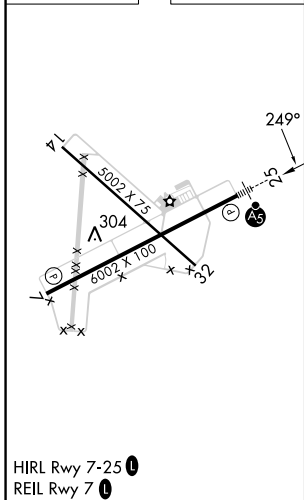
AWOS-3 <b>119.925</b>	JACKSONVILLE CENTER <b>127.575 269.025</b>	UNICOM <b>122.8 (CTAF) 0</b>
--------------------------	---	---------------------------------



SE-4, 11 JUL 2024 to 08 AUG 2024

SE-4, 11 JUL 2024 to 08 AUG 2024

ELEV 274	TDZE 273
----------	----------



CATEGORY	A	B	C	D
LPV DA	473-1/2		200 (200-1/2)	
LNAV/VNAV DA	584-1/2		311 (400-1/2)	
LNAV MDA	740-1/2 467 (500-1/2)		740-1 467 (500-1)	
CIRCLING	740-1 466 (500-1)		920-1 3/4 1060-2 1/2 646 (700-1 3/4) 786 (800-2 1/2)	