

LOC I-MJX <b>109.9</b>	APP CRS <b>063°</b>	Rwy Idg TDZE Apt Elev	<b>5835</b> <b>81</b> <b>86</b>
---------------------------	------------------------	-----------------------------	---------------------------------------

# ILS or LOC RWY 6

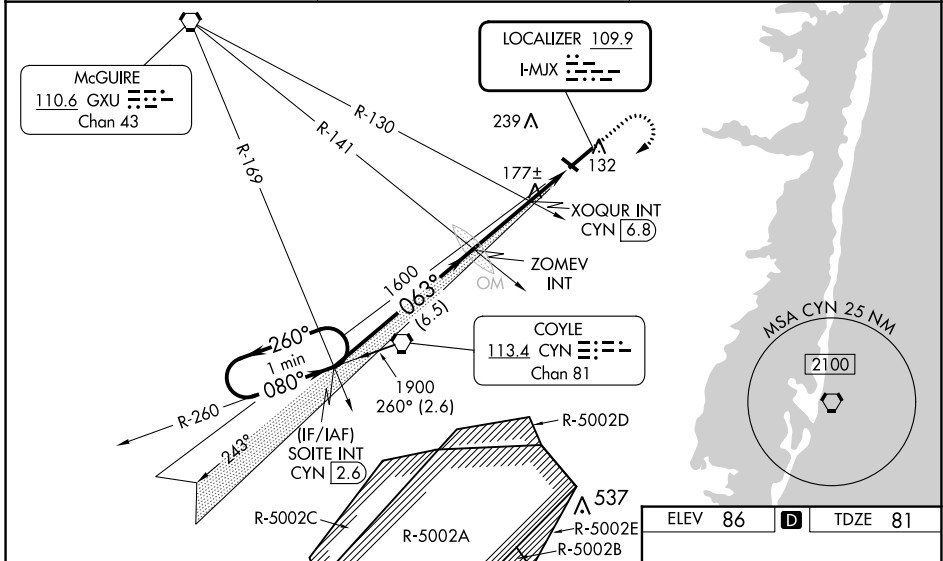
OCEAN COUNTY (MJX)

**⚠** Circling Rwy 14, 32 NA at night. Inop table does not apply to S-ILS 6. For inop ALS, increase S-LOC 6 Cats A/B and S-LOC 6 XOQRX Fix minimums Cats A/B visibility to 1. When local altimeter setting not received, use Mc Guire Fld (Joint Base Mc Guire Dix Lakehurst) altimeter setting and increase all DA 41 feet and all MDA 60 feet; increase S-LOC 6 Cats C/D and Circling Cat C visibility ½ mile, Cat D ¼ mile; increase XOQRX Fix minimums S-LOC 6 Cat C/D visibility ½ mile and Circling Cat D ¼ mile. For inop ALS when using Mc Guire Fld (Joint Base Mc Guire Dix Lakehurst) altimeter setting, increase S-ILS 6 all Cats visibility to ¾ and S-LOC 6 Cats A/B and S-LOC 6 XOQRX Fix minimums Cats A/B visibility to 1, Cats C/D visibility to 1 ½. Rwy 6 helicopter visibility reduction below ¾ SM NA.

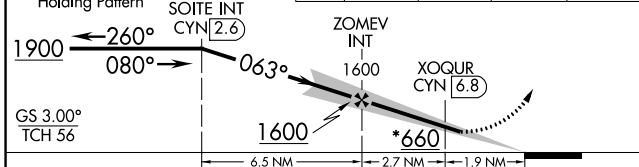
**MISSED APPROACH:**  
Climb to 600 then climbing right turn to 1900 direct CYN VORTAC then on CYN R-260 to SOITE INT/CYN 2.6 DME and hold.



AWOS-3PT <b>119.875</b>	MC GUIRE APP CON <b>126.475 363.8</b>	UNICOM <b>122.7 (CTAF) ①</b>
----------------------------	--	---------------------------------

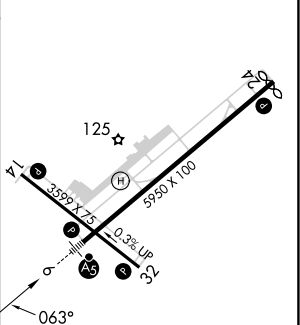


*720 when using Joint Base Mc Guire Dix Lakehurst altimeter setting.	600	1900	CYN	CYN R-260	SOITE INT
--	-----	------	-----	-----------	-----------



CATEGORY	A	B	C	D
S-ILS 6		331-¾	250 (300-¾)	
S-LOC 6	660-¾	579 (600-¾)	660-1¼	579 (600-1¼)
<b>C</b> CIRCLING	660-1	574 (600-1)	574 (600-1¾)	614 (700-2)
XOQRX FIX MINIMUMS (DUAL VOR RECEIVERS or DME REQUIRED)				
S-LOC 6	520-¾	439 (500-¾)	520-7/8	439 (500-7/8)
<b>C</b> CIRCLING	540-1	560-1	580-1½	700-2
	454 (500-1)	474 (500-1)	494 (500-1½)	614 (700-2)

ELEV 86	<b>D</b>	TDZE 81
---------	----------	---------



MIRL Rwy 14-32 ①	
HIRL Rwy 6-24 ①	
REIL Rws 14, 24 and 32 ①	
FAF to MAP 4.6 NM	
Knots	60 90 120 150 180
Min:Sec	4:36 3:04 2:18 1:50 1:32

NE-2, 11 JUL 2024 to 08 AUG 2024

NE-2, 11 JUL 2024 to 08 AUG 2024