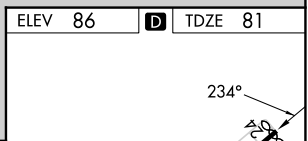
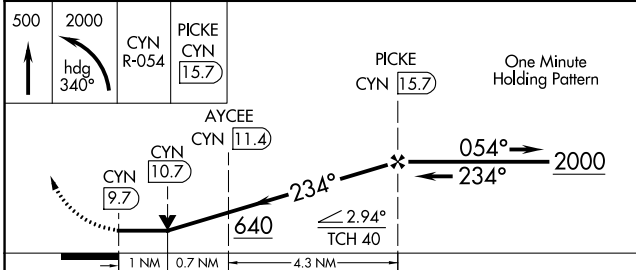
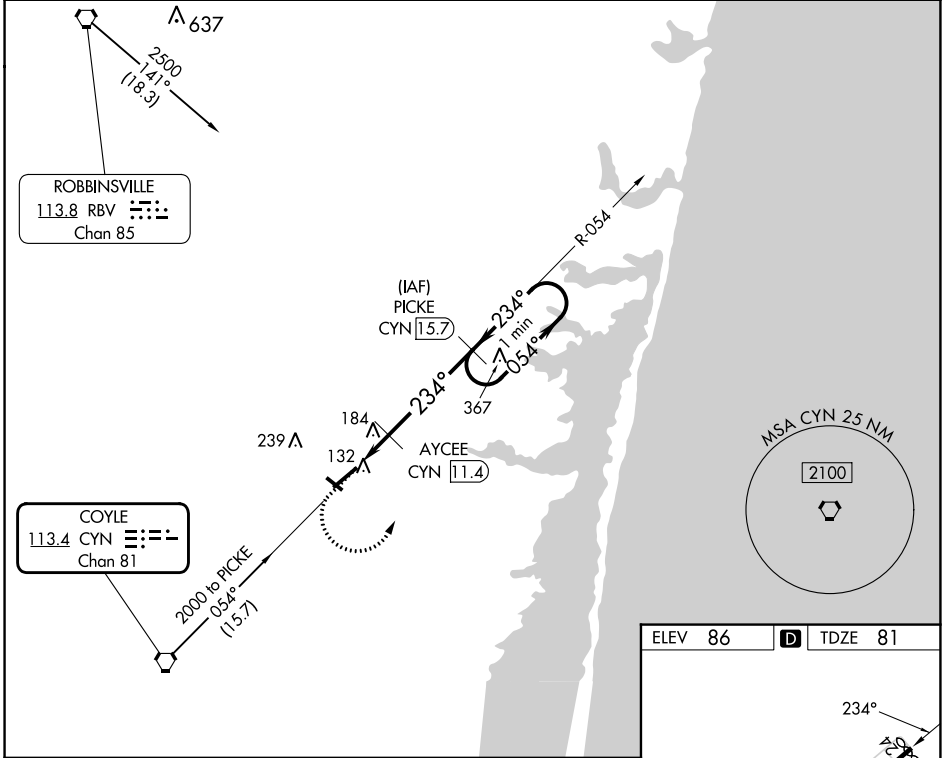


VORTAC CYN 113.4 Chan 81	APP CRS 234°	Rwy Idg TDZE 81 Apt Elev 86	5835
--	------------------------	--	-------------

VOR RWY 24

OCEAN COUNTY (MJX)

DME required for procedure entry. DME required.		MISSED APPROACH: Climb to 500 then climbing left turn to 2000 on heading 340° and on CYN VORTAC R-054 to PICKE/CYN 15.7 DME and hold.
Rwy 24 helicopter visibility reduction below 3/4 SM NA. Circling Rwy 14, 32 NA at night.		
AWOS-3PT 119.875	MC GUIRE APP CON 126.475 363.8	UNICOM 122.7 (CTAF) 0



ELEV 86	D TDZE 81			
500	2000	CYN R-054	PICKE CYN 15.7	One Minute Holding Pattern
↑	hdg 340°			
		AYCEE CYN 11.4	PICKE CYN 15.7	
		CYN 9.7	CYN 10.7	
		640	234°	054° → 2000
		← 234°		
		≤ 2.94°		
		TCH 40		
		1 NM	0.7 NM	4.3 NM
CATEGORY	A	B	C	D
S-24		440-1	359 (400-1)	
C CIRCLING	540-1 454 (500-1)	560-1 474 (500-1)	580-1½ 494 (500-1½)	700-2 614 (700-2)

MIRL Rwy 14-32

HIRL Rwy 6-24

REIL Rws 14, 24 and 32

NE-2, 11 JUL 2024 to 08 AUG 2024

NE-2, 11 JUL 2024 to 08 AUG 2024