

WAAS CH 82531 W09A	APP CRS 089°	Rwy Idg TDZE Apt Elev	5100 706 706
--	------------------------	-----------------------------	---

RNAV (GPS) RWY 9

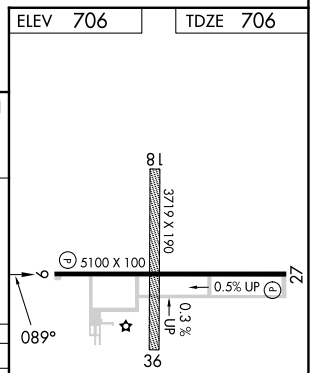
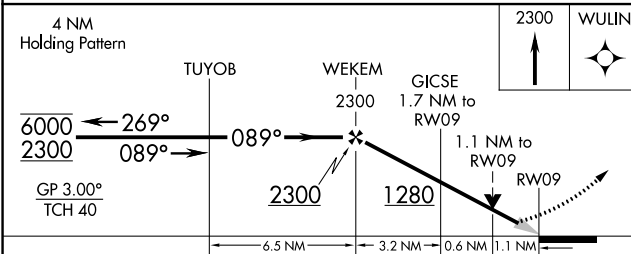
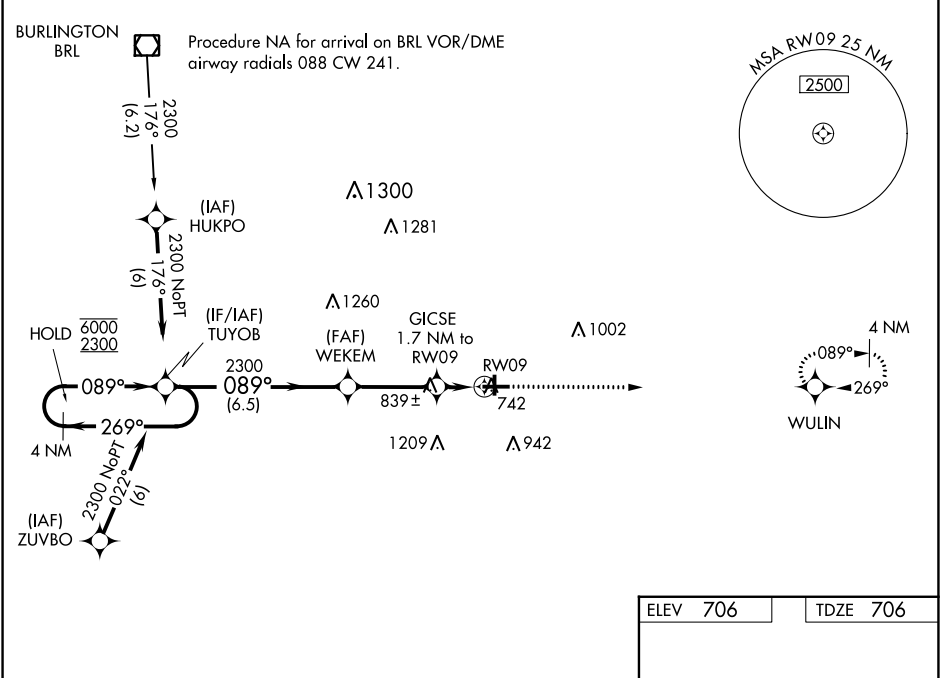
MACOMB MUNI (MQB)

RNP APCH - GPS.

⚠ Circling NA to Rwy's 18 and 36. Baro-VNAV and VDP NA when using Burlington IA altimeter setting. For uncompensated Baro-VNAV systems, LNAV/VNAV NA below -16°C or above 54°C. When local altimeter setting not received, use Burlington IA altimeter setting; increase LPV DA to 969 feet and LNAV/VNAV DA to 1173 feet; increase all MDA 80 feet and visibility Cats C and D ¼ SM.

⚠ MISSED APPROACH: Climb to 2300 direct WULIN and hold.

AWOS-3 119.025	CHICAGO CENTER 135.6 316.1	UNICOM 122.8 (CTAF)
--------------------------	--------------------------------------	-------------------------------



CATEGORY	A	B	C	D
LPV DA		906-1	200 (200-1)	
LNAV/VNAV DA		1110-1 ³ / ₈	404 (500-1 ³ / ₈)	
LNAV MDA	1100-1	394 (400-1)	1100-1 ¹ / ₈	394 (400-1 ¹ / ₈)
CIRCLING	1120-1 414 (500-1)	1260-1 554 (600-1)	1520-2 ¹ / ₂ 814 (900-2 ¹ / ₂)	1520-2 ³ / ₄ 814 (900-2 ³ / ₄)

REIL Rwy's 9 and 27 **⓪**
HIRL Rwy 9-27 **⓪**

EC-3, 11 JUL 2024 to 08 AUG 2024

EC-3, 11 JUL 2024 to 08 AUG 2024