

WAAS CH <b>56404</b> <b>W06A</b>	APP CRS <b>054°</b>	Rwy Idg TDZE Apt Elev	<b>5504</b> <b>859</b> <b>859</b>
--	------------------------	-----------------------------	---

# RNAV (GPS) RWY 6

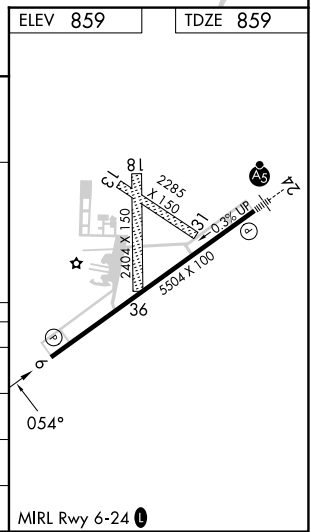
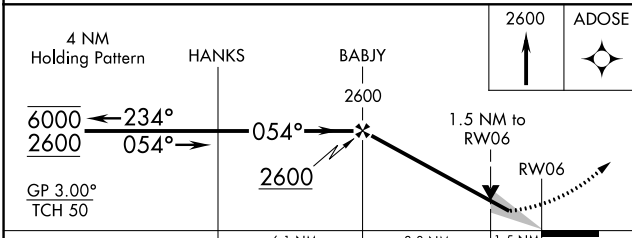
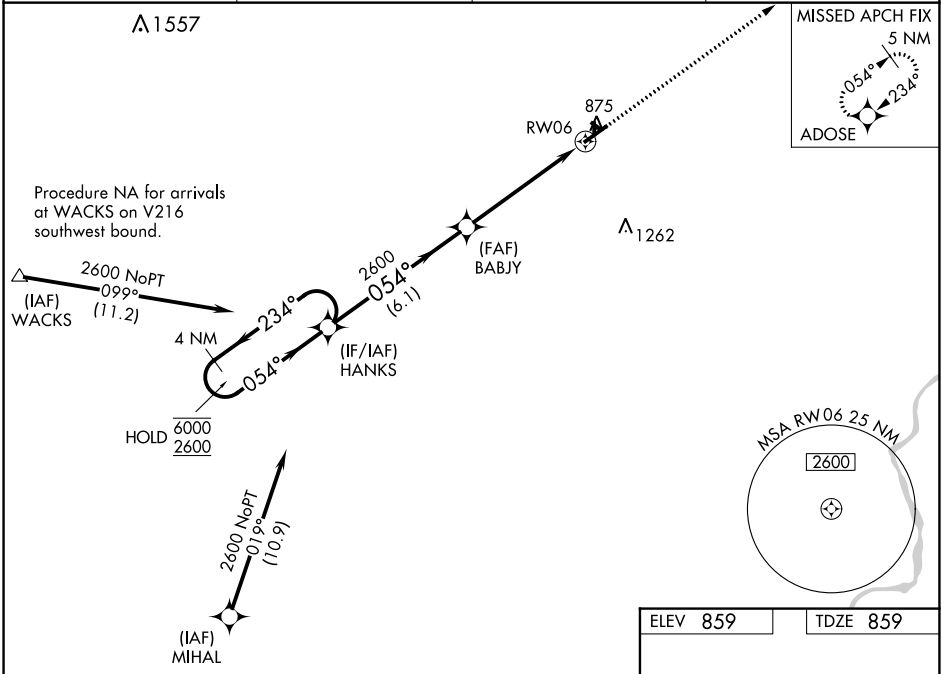
ALBERTUS (FEP)

RNP APCH - GPS.

**⚠** Circling NA to Rwy 13, 18, 31, and 36.  
For uncompensated Baro-VNAV systems,  
LNAV/VNAV NA below -16°C or above 54°C.

MISSED APPROACH:  
Climb to 2600 direct  
ADOSE and hold.

AWOS-3 <b>120.525</b>	ROCKFORD APP CON <b>126.0 327.0</b>	CLNC DEL <b>121.85</b>	UNICOM <b>122.8 (CTAF) 0</b>
--------------------------	--	---------------------------	---------------------------------



CATEGORY	A	B	C	D
LPV DA		1109- <sup>3</sup> / <sub>4</sub>	250 (300- <sup>3</sup> / <sub>4</sub> )	
LNAV/VNAV DA		1371-1 <sup>3</sup> / <sub>8</sub>	512 (600-1 <sup>3</sup> / <sub>8</sub> )	
LNAV MDA	1380-1	521 (600-1)	1380-1 <sup>1</sup> / <sub>2</sub>	521 (600-1 <sup>1</sup> / <sub>2</sub> )
CIRCLING	1380-1 521 (600-1)	1400-1 541 (600-1)	1440-1 <sup>1</sup> / <sub>2</sub> 581 (600-1 <sup>1</sup> / <sub>2</sub> )	1620-2 <sup>1</sup> / <sub>2</sub> 761 (800-2 <sup>1</sup> / <sub>2</sub> )