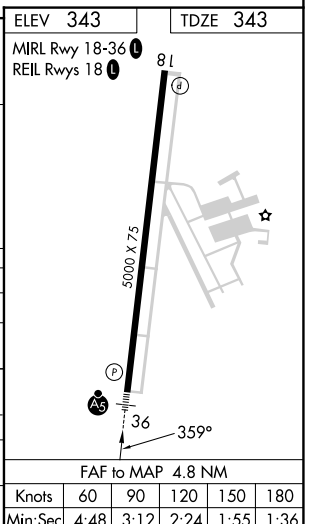
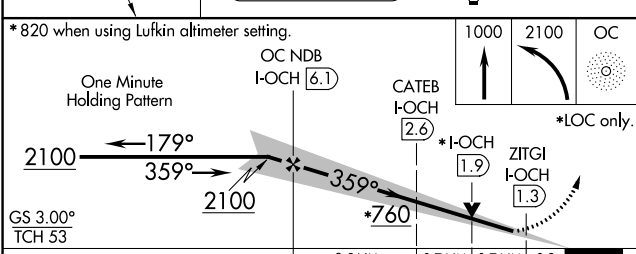
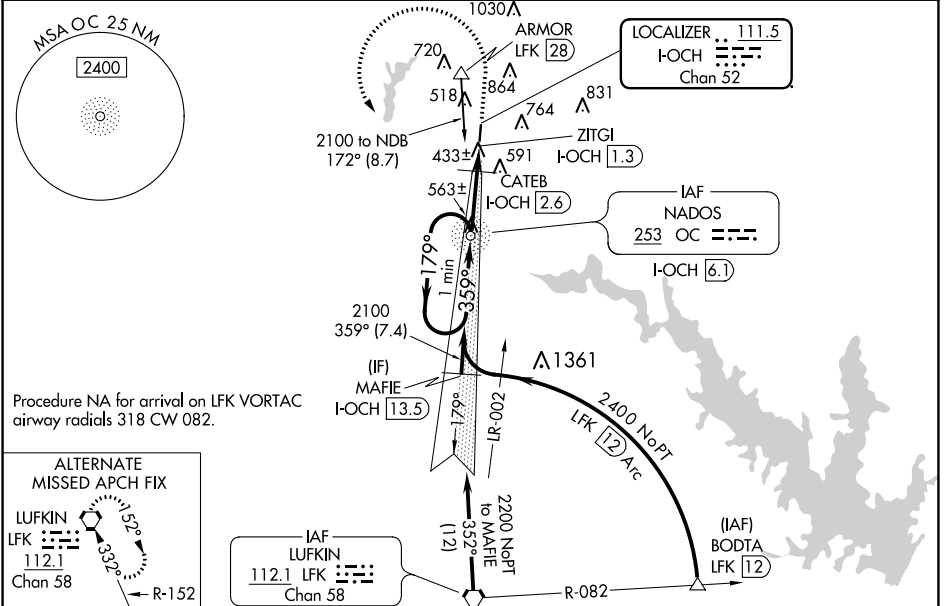


LOC/DME I-CH <b>111.5</b> Chan <b>52</b>	APP CRS <b>359°</b>	Rwy ldg <b>5000</b> TDZE <b>343</b> Apt Elev <b>343</b>
--	------------------------	--

# ILS or LOC RWY 36

NACOGDOCHES A L MANGHAM JR RGNL (OCH)

ADF or DME required.		MALSR 	MISSED APPROACH: Climb to 1000 then climbing left turn to 2100 direct NADOS/OC NDB and hold.
AWOS-3PT <b>135.625</b>		HOUSTON CENTER <b>125.175 285.575</b>	UNICOM <b>123.0 (CTAF)</b>



CATEGORY	A	B	C	D
S-ILS 36	543-1/2 200 (200-1/2)			NA
S-LOC 36	760-1/2	417 (500-1/2)	760-3/4 417 (500-3/4)	NA
CIRCLING	860-1	517 (600-1)	1080-2 737 (800-2)	NA
CATEB FIX MINIMUMS (DME REQUIRED)				
S-LOC 36	700-1/2	357 (400-1/2)	700-3/8 357 (400-3/8)	NA
CIRCLING	860-1	517 (600-1)	1080-2 737 (800-2)	NA

FAF to MAP 4.8 NM					
Knots	60	90	120	150	180
Min:Sec	4:48	3:12	2:24	1:55	1:36

SC-5, 11 JUL 2024 to 08 AUG 2024

SC-5, 11 JUL 2024 to 08 AUG 2024