

APP CRS <b>127°</b>	Rwy Idg TDZE Apt Elev	<b>4494</b> <b>882</b> <b>887</b>
------------------------	-----------------------------	---

# RNAV (GPS) RWY 13

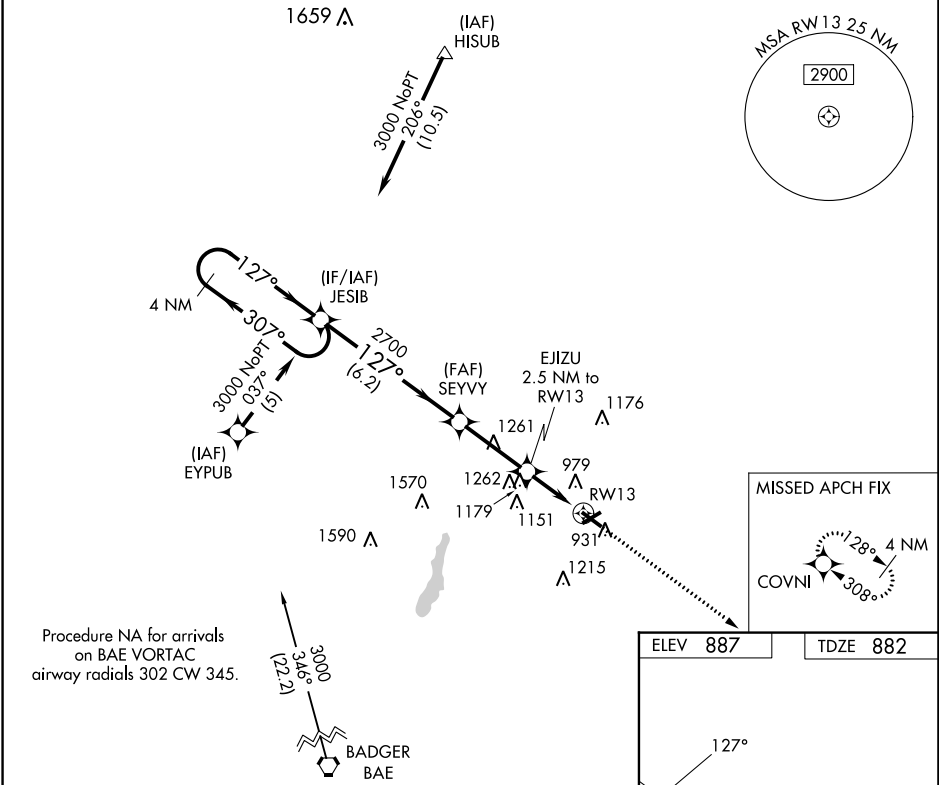
WEST BEND MUNI (E/TB)

RNP APCH - GPS.

⚠ When local altimeter setting not received, use Milwaukee/Lawrence J Timmerman altimeter setting: increase all MDA 80 feet and increase LNAV Cat C/D visibility ½ SM and Circling Cat C/D visibility ¼ SM. Night landing: Rwy 6 NA. Helicopter visibility reduction below ¼ SM NA.

MISSED APPROACH:  
Climb to 3000 direct  
COVNI and hold.

AWOS-3 <b>120.0</b>	MILWAUKEE APP CON <b>125.35 307.0</b>	CLNC DEL <b>124.75</b>	UNICOM <b>123.05 (CTAF) 0</b>
------------------------	--	---------------------------	----------------------------------

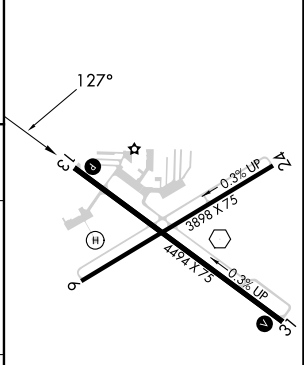
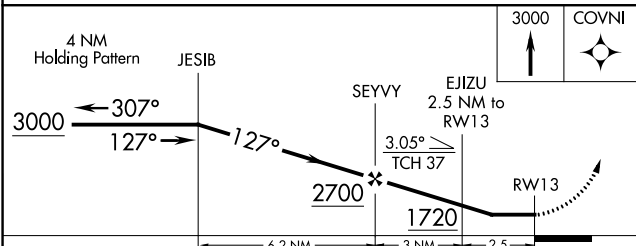


EC-3, 11 JUL 2024 to 08 AUG 2024

EC-3, 11 JUL 2024 to 08 AUG 2024

Procedure NA for arrivals  
on BAE VORTAC  
airway radials 302 CW 345.

ELEV <b>887</b>	TDZE <b>882</b>
-----------------	-----------------



CATEGORY	A	B	C	D
LNAV MDA	1480-1 598 (600-1)	598 (600-1)	1480-1½ 598 (600-1½)	1480-1¾ 598 (600-1¾)
CIRCLING	1480-1 593 (600-1)	1520-1 633 (700-1)	1560-2 673 (700-2)	1560-2¼ 673 (700-2¼)

REIL Rwy 13 and 31 0  
MIRL Rwy 6-24 and 13-31 0