

WAAS CH <b>93816</b> <b>W31A</b>	APP CRS <b>308°</b>	Rwy Idg TDZE Apt Elev	<b>4494</b> <b>879</b> <b>887</b>
--	------------------------	-----------------------------	---

# RNAV (GPS) RWY 31

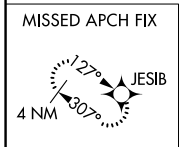
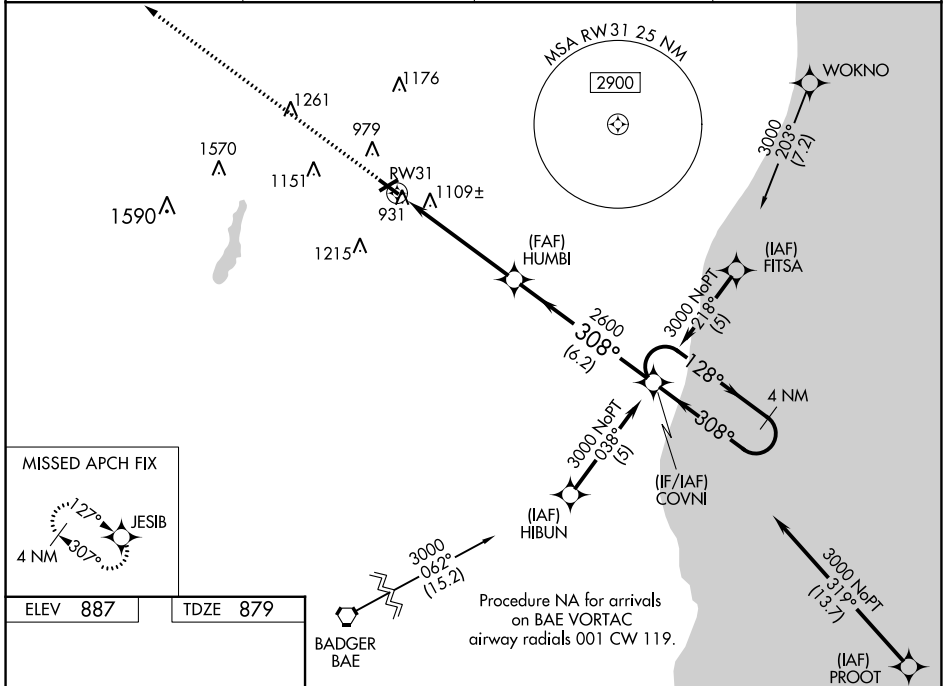
WEST BEND MUNI (E/TB)

RNP APCH - GPS.

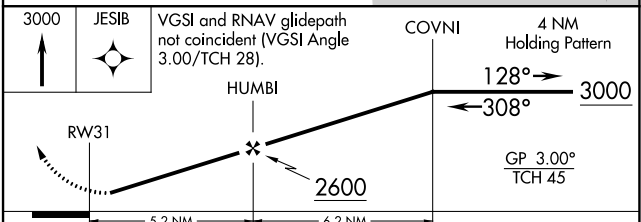
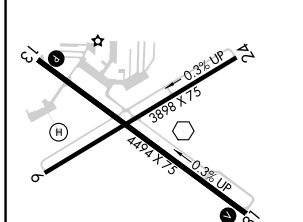
▼ Baro-VNAV NA when using Milwaukee/Lawrence J. Timmerman altimeter setting. For uncompensated Baro-VNAV systems, LNAV/VNAV NA below -16°C (4°F) or above 47°C (116°F). Helicopter visibility reduction below ¾ SM NA. When local altimeter setting not received, use Milwaukee/Lawrence J. Timmerman altimeter setting and increase all DA 64 feet and all MDA 80 feet. Increase LPV all Cats and LNAV and Circling Cats C/D visibility ¼ mile. Night landing: Rwy 6 NA.

⚠ MISSED APPROACH: Climb to 3000 direct JESIB and hold.

AWOS-3 <b>120.0</b>	MILWAUKEE APP CON <b>125.35 307.0</b>	CLNC DEL <b>124.75</b>	UNICOM <b>123.05 (CTAF)</b> 📻
------------------------	--	---------------------------	----------------------------------



ELEV 887	TDZE 879
----------	----------



CATEGORY	A	B	C	D
LPV DA		1175-1	296 (300-1)	
LNAV/VNAV DA		1482-2	603 (600-2)	
LNAV MDA	1420-1	541 (600-1)	1420-1½ 541 (600-1½)	1420-1¾ 541 (600-1¾)
CIRCLING	1420-1 533 (600-1)	1520-1 633 (700-1)	1560-2 673 (700-2)	1560-2¼ 673 (700-2¼)

REIL Rwy 13 and 31 📻  
MIRL Rwy 6-24 and 13-31 📻

EC-3, 11 JUL 2024 to 08 AUG 2024

EC-3, 11 JUL 2024 to 08 AUG 2024